

Digital View provides a range of LCD controller boards designed for monitors and display systems used in harsher environments:

- Extended operating temperatures, up to -40°C to 80°C
- Conformal coating
- Vibration
- Options: Staking, MIL spec connectors, etc.

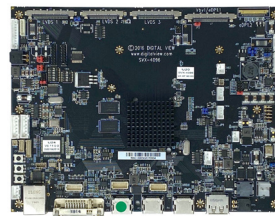
Models include:

- HX-4096
- HSP-4096 and HSP-1920
- HLT-1920
- HE-1400v2

LCD Controller Boards for Harsh Environments

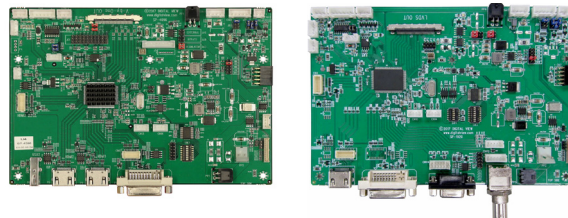
HX-4096

The HX-4096 is a fully featured 4K LCD controller board with LVDS, V-by-One, eDP panel connection and supporting an extensive range of functions and accessories.



HSP-4096 & HSP-1920

The HSP-4096 and HSP-1920 provide a cost effective solution for 4K and Full-HD video input over HDMI, DVI-D and VGA interlaced and non-interlaced.



HLT-1920

Low latency video input with HDMI, Displayport, VGA up to 1920x1200 resolution LVDS panel connection.



HE-1400v2

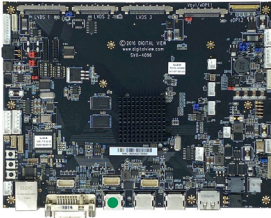
Support for LVDS and TTL panels and DVI-D and VGA video input up to 1400x900 resolution. Compact and highly reliable.



Custom

Fully custom LCD controller boards to meet specific needs.

Specifications



HX-4096 for 4K, 4096x2160

Panel Connection

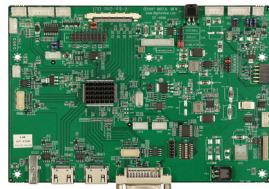
- V-by-One, 8 lane
- LVDS (8 channel)
- eDP (HBR/HBR2)
- 60Hz
- up to 10-Bit
- 3.3v, 5v, 10v, 12v, 18v

Video Input

- HDMI 2.0 x 1, 1.4 x 2
- DVI Dual-link x 1
- DisplayPort 1.2 x 1
- VGA x 1 (via DVI adaptor)

Functions & Features

- Programmable Gamma LUT
- PiP, PbP
- Remote monitoring
- Ethernet, RS-232, IR
- 12/24V DC Input
- PWM, Analog backlight control
- Digital audio line out
- Latency: 15ms
- -20°C to 80°C
- Board size: 203.2 x 154.0mm
- P/N: 4175501XX-3



HSP-4096 for 4K, 4096x2160

Panel Connection

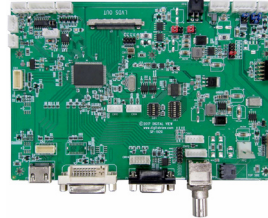
- V-by-One, 8 lane
- 60Hz
- up to 10-Bit
- 3.3v, 5v, 10v, 12v, 18v

Video Input

- HDMI x 2 + 1 header
- DVI-I x 1
- VGA x 1 (via DVI adaptor)

Functions & Features

- RS-232, IR
- 12/24V DC Input
- PWM, Analog backlight control
- -20°C to 80°C
- Board size: 179.1 x 120.4mm
- P/N: 4176101XX-3



HSP-1920 for 1920x1200

Panel Connection

- LVDS (2 channel)
- 60Hz
- up to 10-Bit
- 3.3v, 5v, 10v, 12v, 18v

Video Input

- HDMI x 1 + 1 header
- DVI-D x 1
- ARGB (VGA) x 1
- HD/SD Component x 1
- Composite x 2

Functions & Features

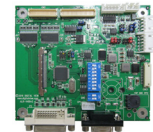
- Image flip
- Remote monitoring
- RS-232, IR
- 12/24V DC Input
- PWM, Analog backlight control
- -20°C to 80°C
- Board size: 179.1 x 120.4mm
- P/N: 4176001XX-3



HLT-1920 for 1920x1200

Panel Connection

- LVDS (2 channel), 8 bit
- 3.3v, 5v, 12v, 18v
- HDMI, DisplayPort, VGA
- RS-232, IR
- PWM, Analog backlight control
- Latency: 13ms
- -40°C to 80°C
- Board size: 107.5 x 91.6mm
- P/N: 4176401XX-3



HE-1400v2 for 1400x900

Panel Connection

- LVDS (2 channel), TTL, 8 bit
- 3.3v, 5v, 12v, 18v
- DVI-D, VGA
- RS-232
- PWM, Analog backlight control
- Latency: 11ms
- -40°C to 80°C
- Board size: 107.5 x 91.4mm
- P/N: 4175801XX-3

Controller boards should be tested for environmental suitability. Specifications are subject to change without notice

ACCESSORIES & CUSTOM

Optional accessories include add-on boards, buttons, cables. In addition for both LCD controller boards and accessories Digital View provide customization and full custom engineering development services.

For a list of all Digital View LCD controller boards see: <https://www.digitalview.com/controllers/lcd-controllers-home.html>

USA

18440 Technology Drive, Unit 130, Morgan Hill, CA 95037, USA
t: +1 (408) 782-7773

EUROPE

The Lake House, Knebworth Park, Herts, SG3 6PY, UK
t: +44 (0) 20-7631-2150

ASIA

705-708 Texwood Plaza, 6 How Ming St, Kwun Tong, Hong Kong
t: (852) 2861-3615