

Application Note

Firmware upgrade for AVP-1600

P/N 4172200XX-3

Version 1.00

Table of Contents

1	Introduction	3
2	Firmware Upgrade procedure	3

1 Introduction

The AVP-1600 controller is an easy to use high quality Composite & S-Video input video interface for LCD panels up to 1600x1200 resolution.

One of the features of the AVP-1600 is the ability to update its firmware as detailed in this Application Note.

IMPORTANT NOTE: Firmware Upgrading must only be done by suitably qualified professionals or technicians. Digital View is not responsible for damage or injury caused by the firmware upgrade procedure.

2 Firmware Upgrade procedure

AVP-1600 firmware upgrade is done via an RS-232 link from a PC to the AVP-1600.

PC Requirements:

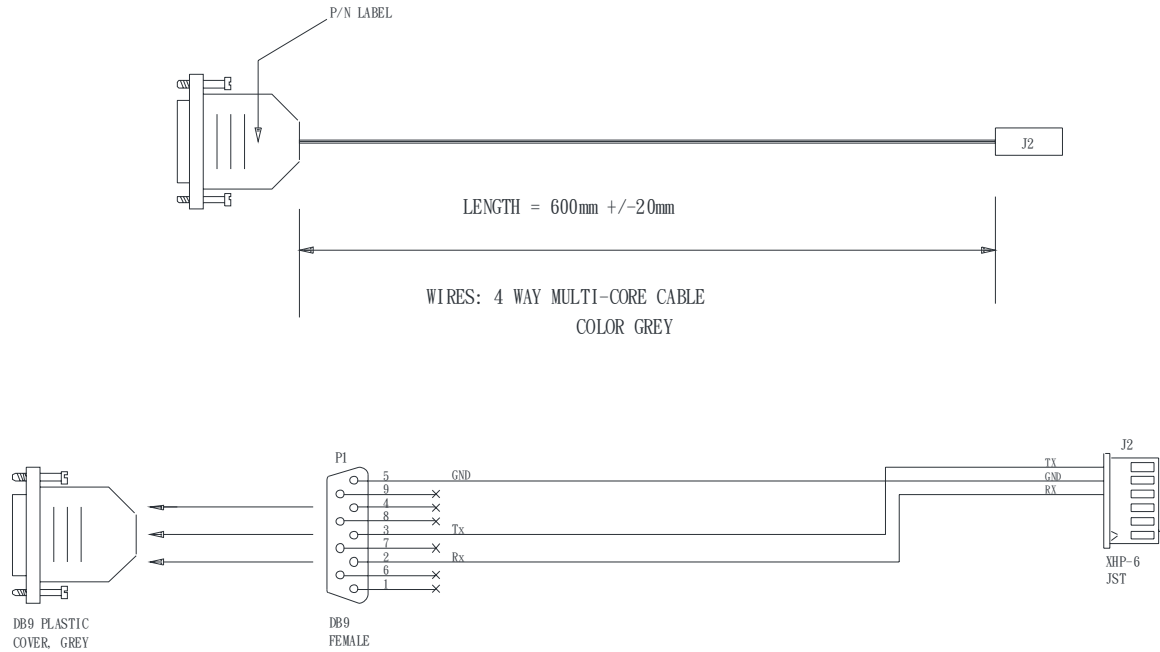
- On the PC the software required is an application called GProbe which runs under Windows XP (other OS versions are not supported).
- The relevant version of GProbe is “GProbe5.1.0.16.exe”, this is available from your local Digital View office.

AVP-1600 Requirements:

- The AVP-1600 to be upgraded needs to be fully connected with power and a display. This should be a bench or assembly setup and care must be taken to avoid short circuits or electrical shock. **Digital View does not accept responsibility for damage caused during a firmware upgrade procedure** – care must be exercised

Step 1.1 : Use RS-232 cable (P/N 426090200-3) to connect from the DB9 serial port connector on the PC to connect to CN8 on the controller board.

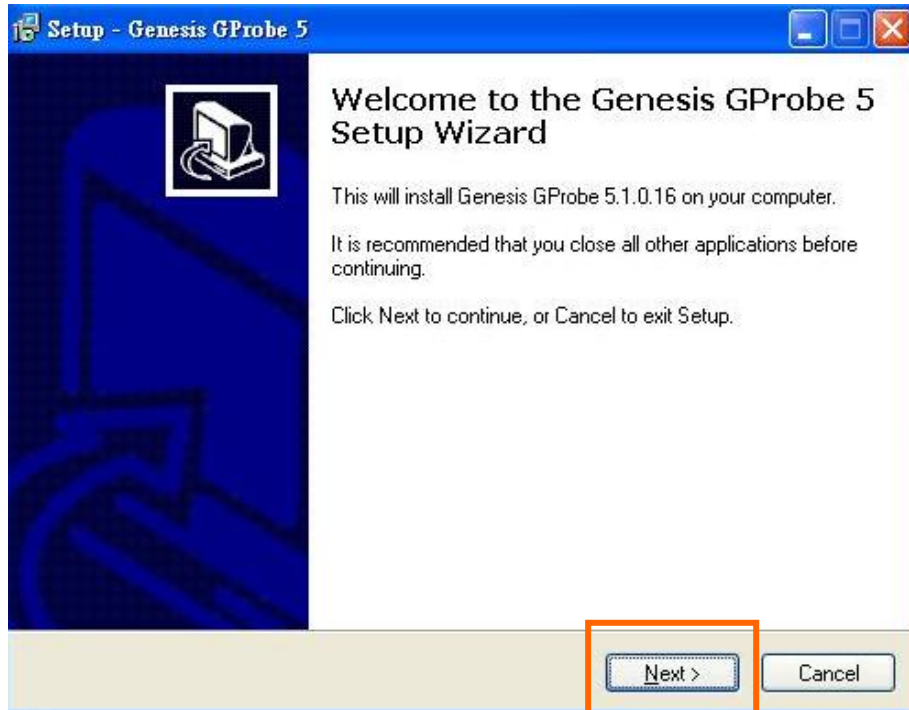
RS-232 cable P/N 426090200-3 drawing :



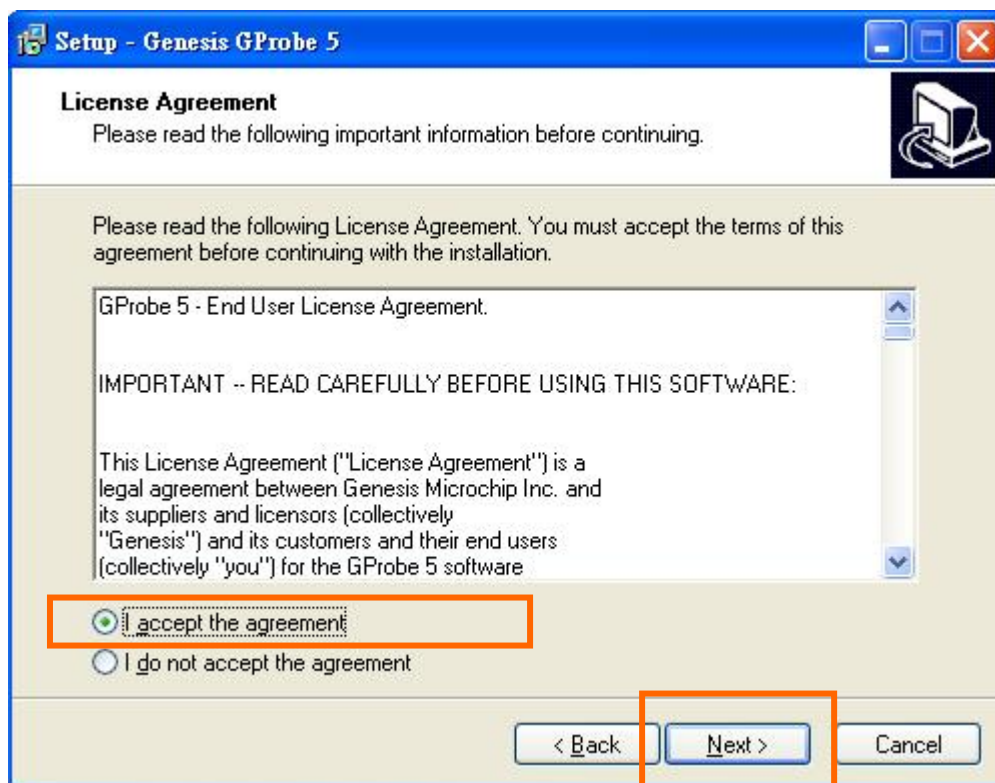
Step 2.1 : Install the “GProbe5.1.0.16.exe” firmware upgrade program on your PC, see steps 2.2 – 2.8 for details.



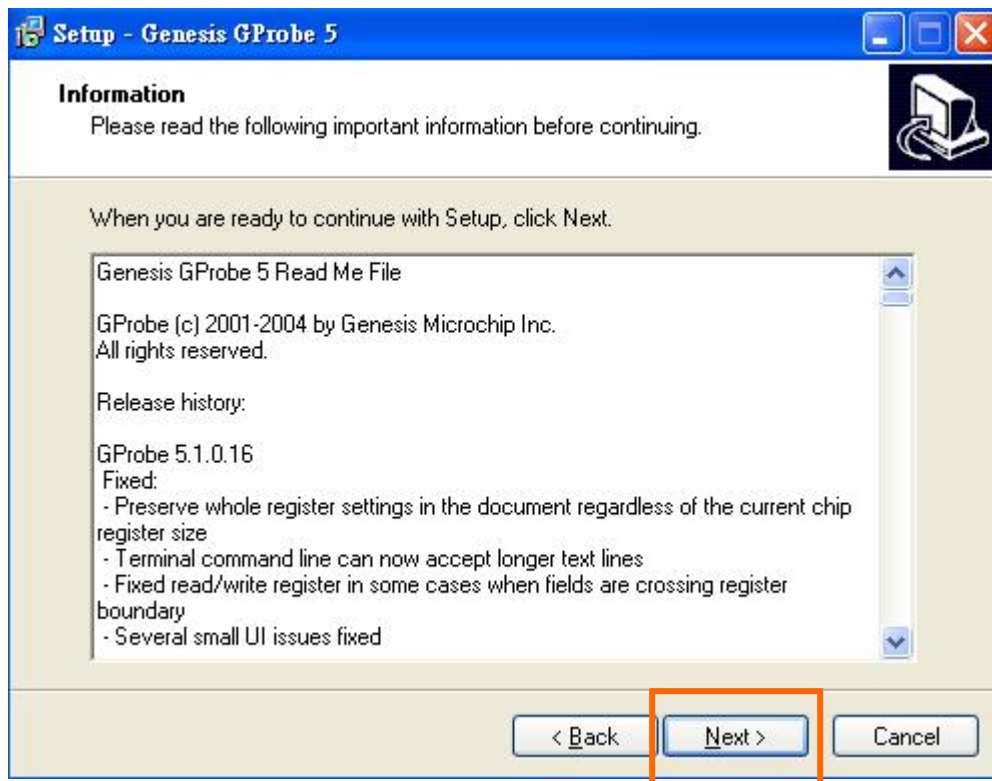
Step 2.2 : Starting “GProbe5.1.0.16.exe” will open a Setup Wizard as follows – Click “Next”



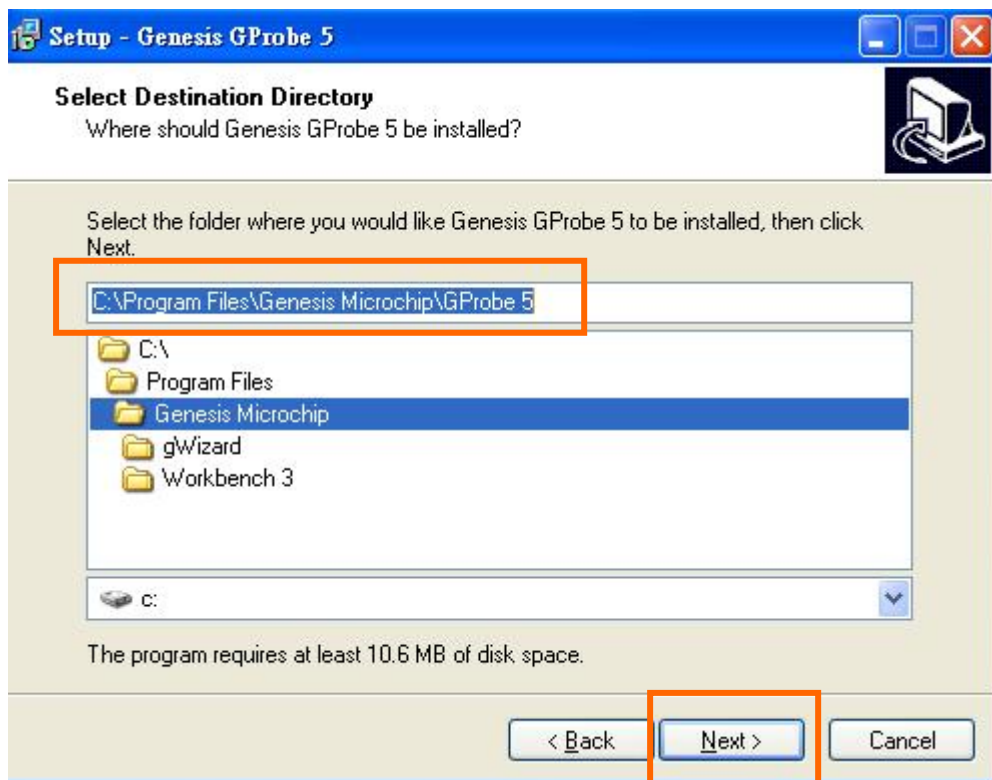
Step 2.3 : Choose “I accept the agreement” and click “Next”.



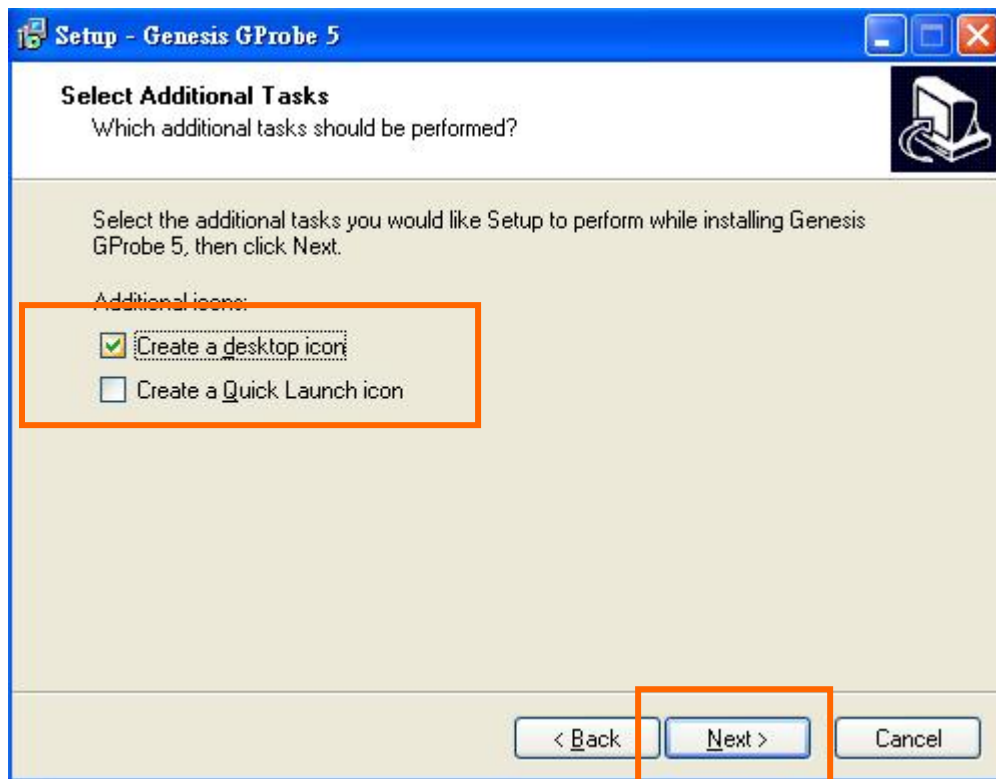
Step 2.4 : Click “Next”



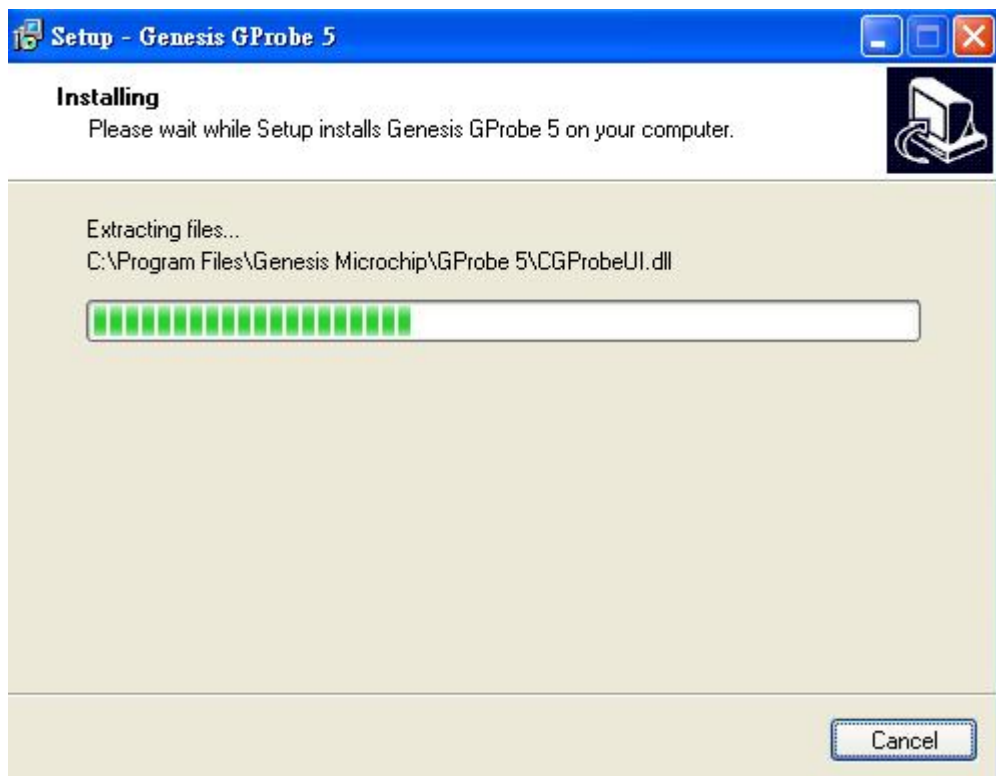
Step 2.5 : Define the path and directory to be installed the program, then click “Next”.



Step 2.6 : Select your preferred options then click “Next”



Step 2.7 : Installing the program in progress.



Step 2.8 : Click “Finish” to finish the installation of the GProbe program.

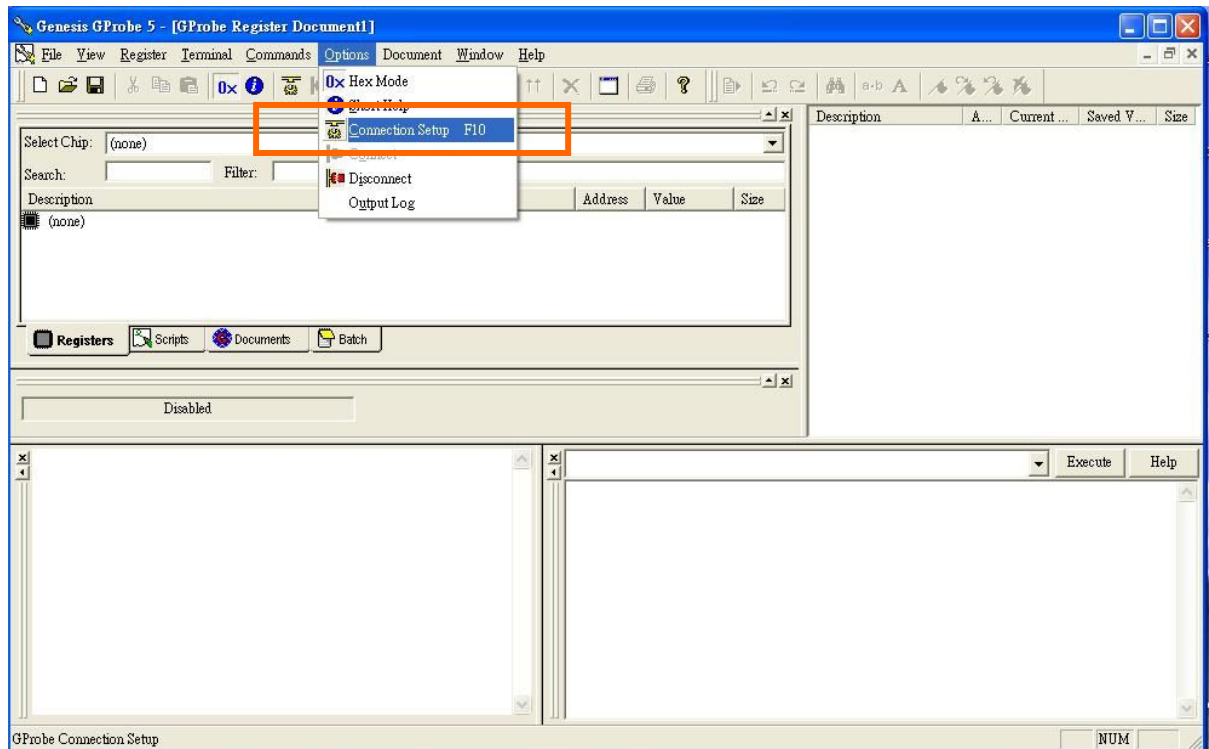


Step 2.9 : AVP-1600 firmware code is normally delivered as a Zip file. Unzip the firmware code and put it in the same directory as the GProbe software.

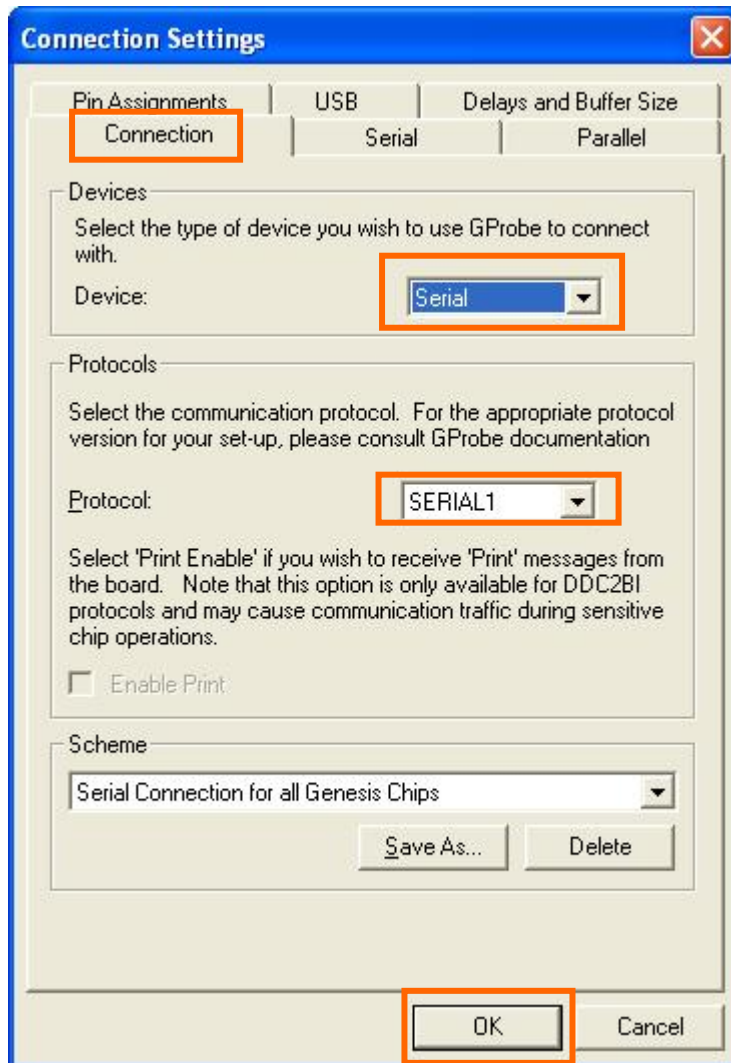
Step 2.10 : The PC should now be ready to run the GProbe program.



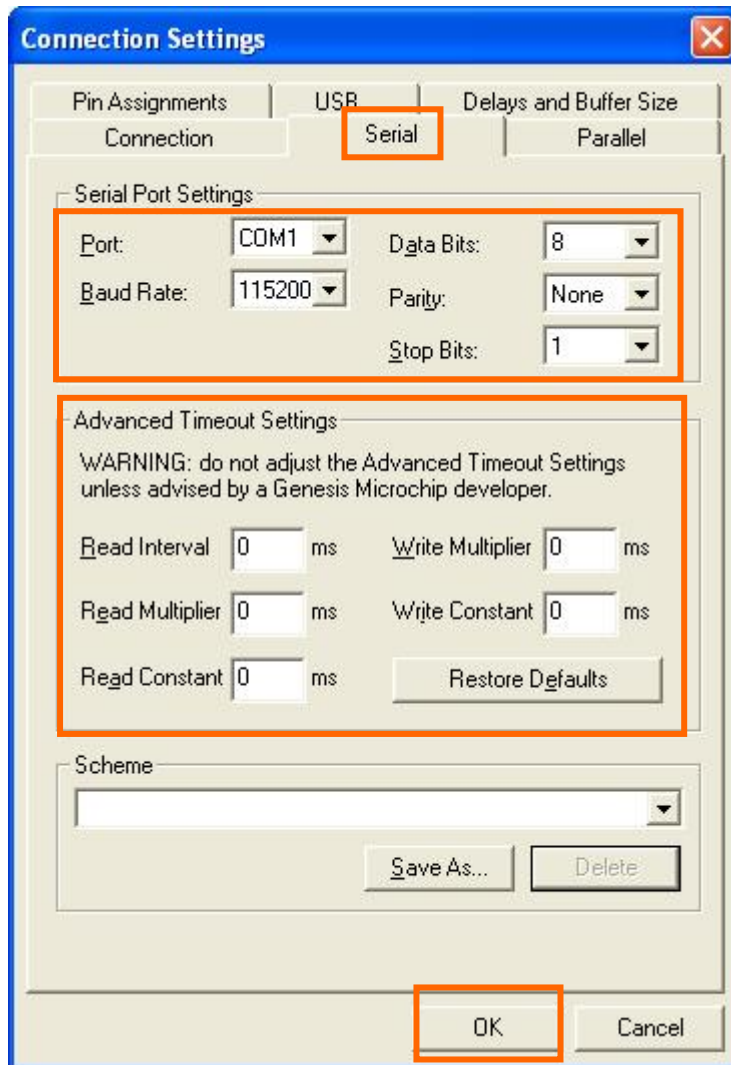
Step 2.11 : Run the GProbe program. Choose “Options” → “Connection Setup”



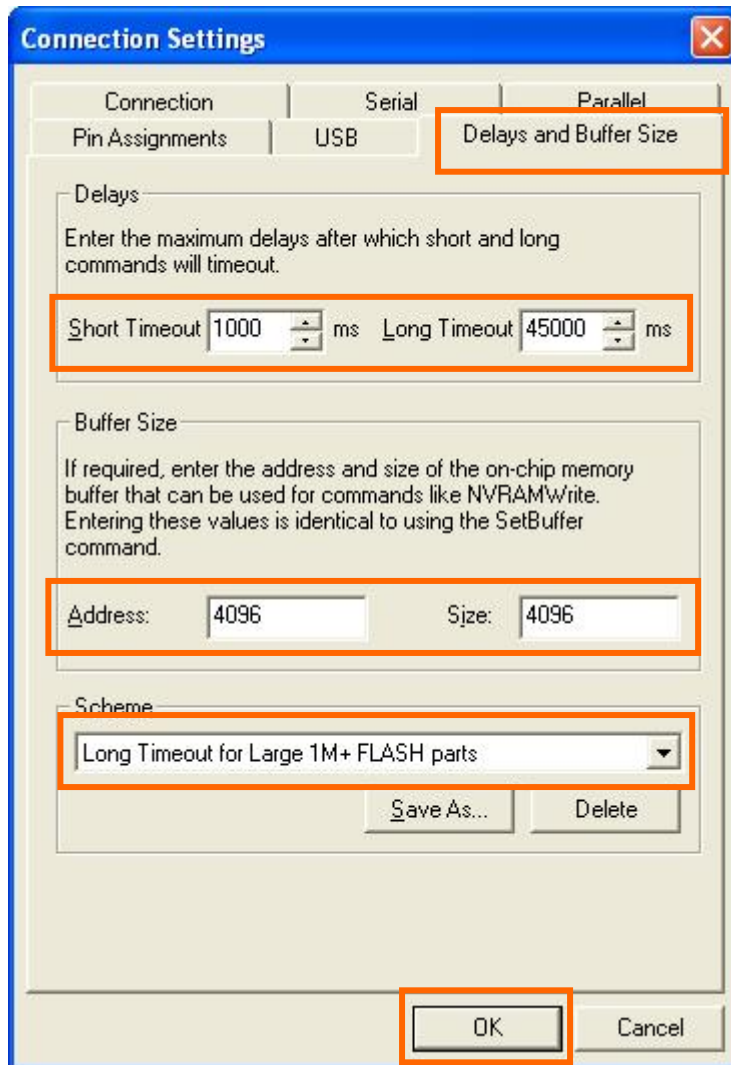
Step 2.12 : Choose the matching connection settings for AVP-1600 firmware programming as shown below, then click “confirm”



Step 2.13 : Select the serial settings for firmware programming as shown below, then click “confirm”



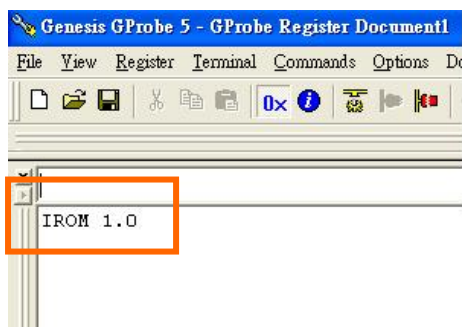
Step 2.14 : Choose the matching Delays and buffer size settings for AVP-1600 firmware programming, then click “confirm”



Step 2.15 : Remove JP1 jumpers on AVP-1600 controller.

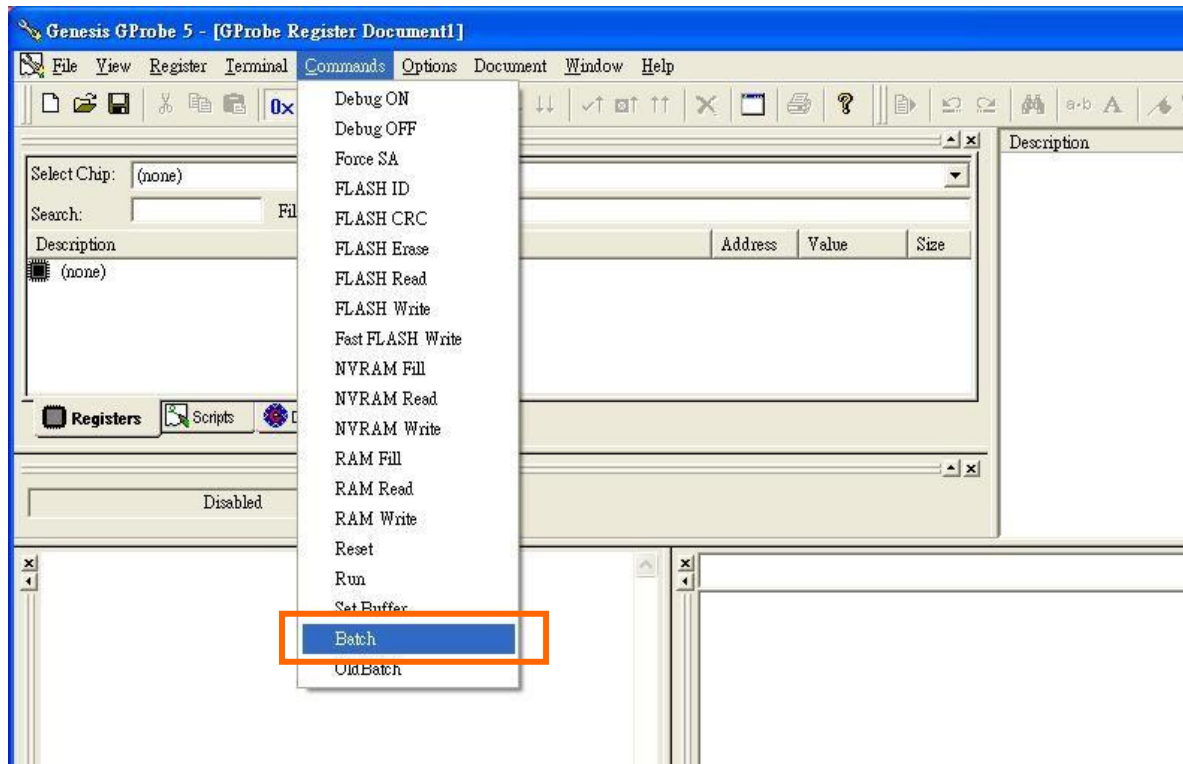
Step 2.16 : Power on the AVP-1600 controller.

Step 2.17 : “IROM 1.0” message will display on screen as shown below.

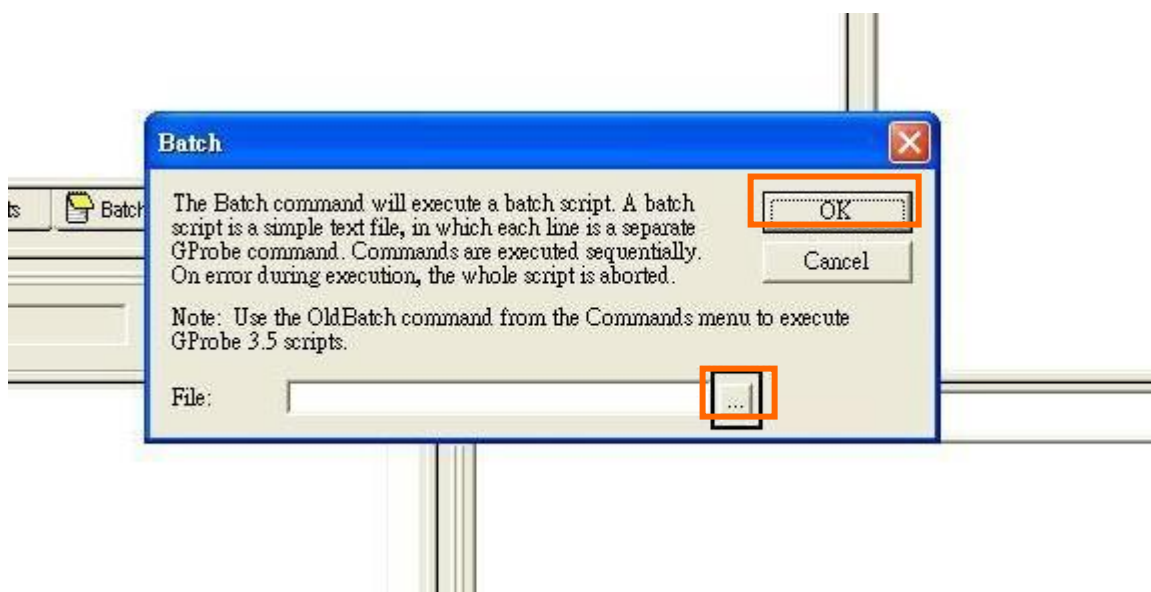


Step 2.18 : Short JP1 jumper on AVP-1600 controller.

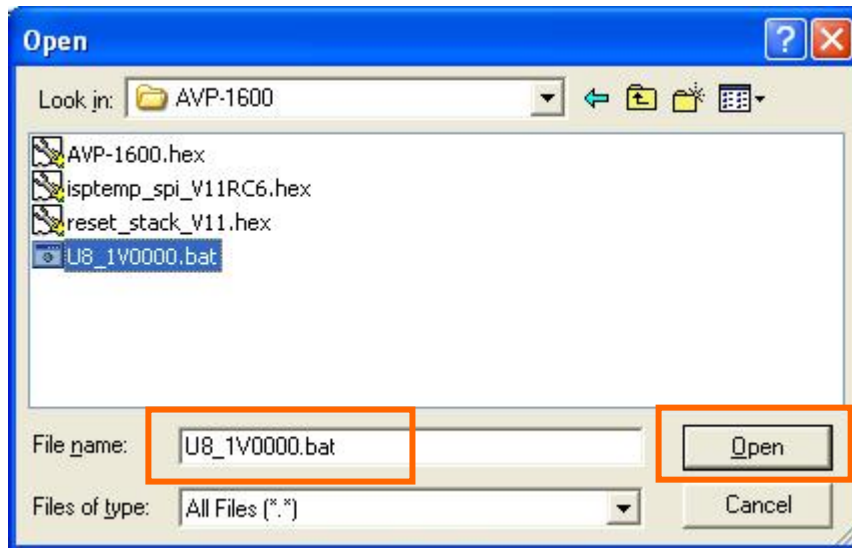
Step 2.19 : Choose “Commands” → “Batch”



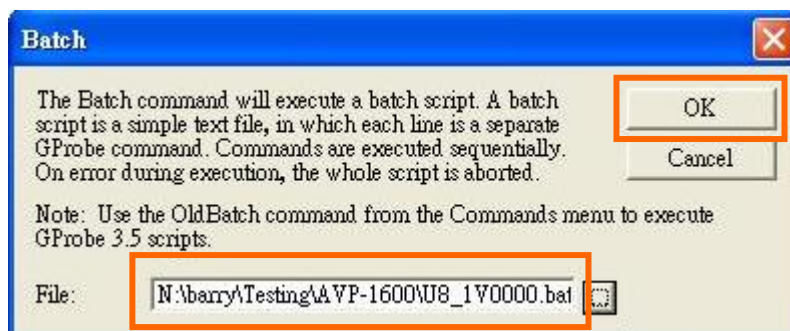
Step 2.20 : Get the firmware by clicking the directory icon.



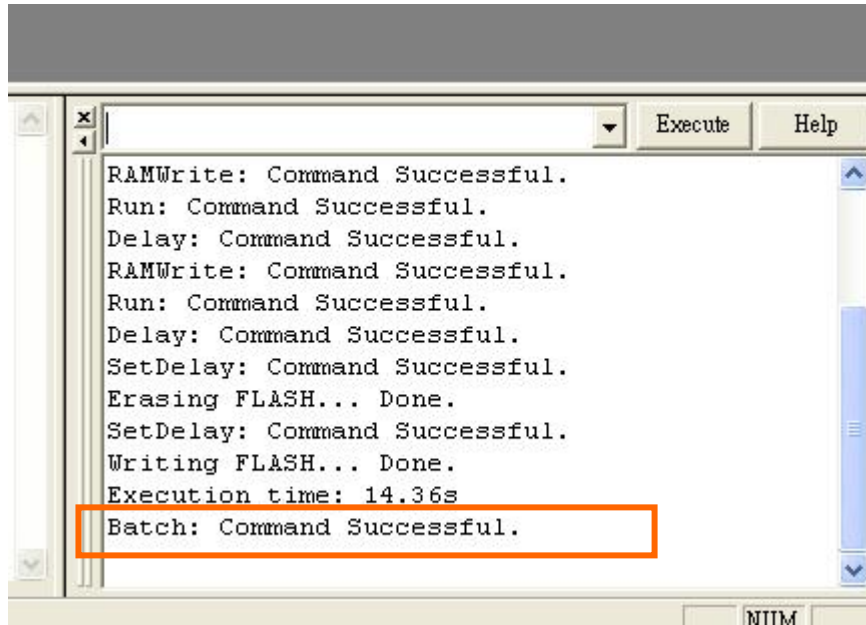
Step 2.21 : Choose “.bat” file for firmware upgrade and click “Open”



Step 2.22 : Click “OK”. Then it will automatically download the firmware into the controller.



Step 2.23 : Show “Batch: Command Successful” to indicate the firmware is successfully downloaded.



Step 2.24: Power the controller off and then on.

Step 2.25 : Perform the “Load factory default” on the AVP-1600 controller. And check the version display on the OSD menu is the same you have just programmed.

End.

Date : 1 April 2009

CONTACT DETAILS

USA: Digital View Inc.
18440 Technology Drive
Building 130
Morgan Hill, CA 95037
Tel: (1) 408-782 7773 **Fax:** (1) 408-782 7883
Sales: ussales@digitalview.com

EUROPE: Digital View Inc.
Marylebone Passage
London
W1W 8EX
UK
Tel: (44) (0)20 7631 2150 **Fax :** (44) (0)20 7631 2156
Sales : uksales@digitalview.com

ASIA: Digital View Ltd.
16th floor Millennium City 3
370 Kwun Tong Road
Kwun Tong
Hong Kong
Tel: (852) 28613615 **Fax:** (852) 25202987
Sales: hksales@digitalview.com