

Application Note

Firmware upgrade procedure for IE-1000 P/N 41719002X-3 board

Version 1.00

Table of Contents

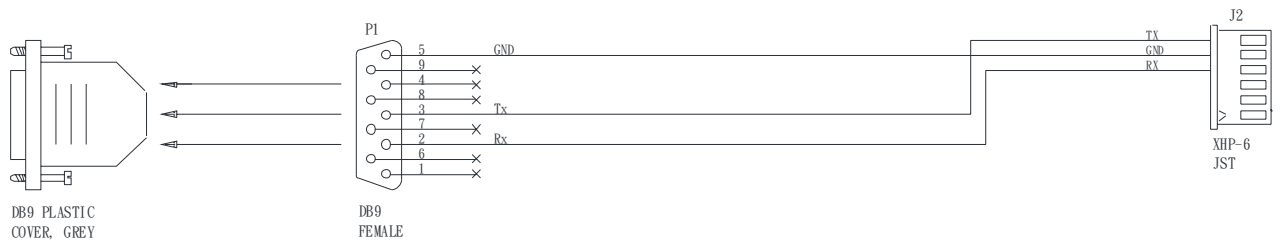
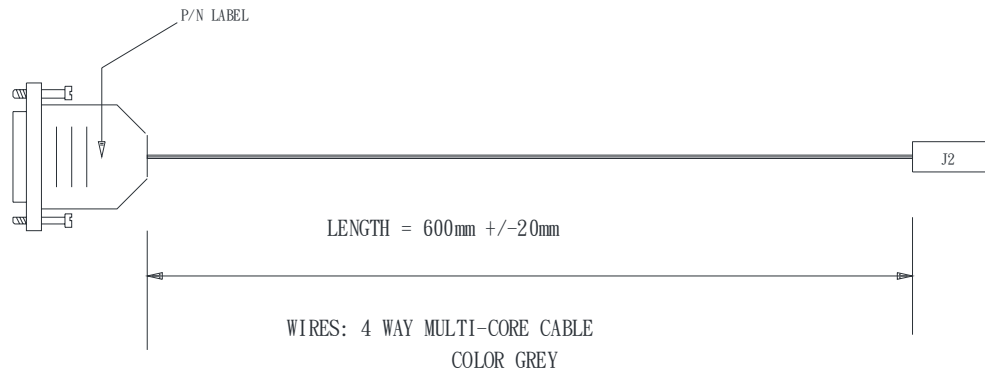
1	Setup	2
2	Firmware Upgrade procedure	3

1 Setup

The “avrud.exe” firmware upgrade program can be run under Windows XP platform. Please contact your local office to get the program.

Step 1.1 : Use RS-232 cable (suggest to use P/N 426090200-3). DB9 connector connect to serial port, and JST XHP-6 connector connect to CN6 on the IE-1000.

RS-232 cable P/N 426090200-3 drawing :



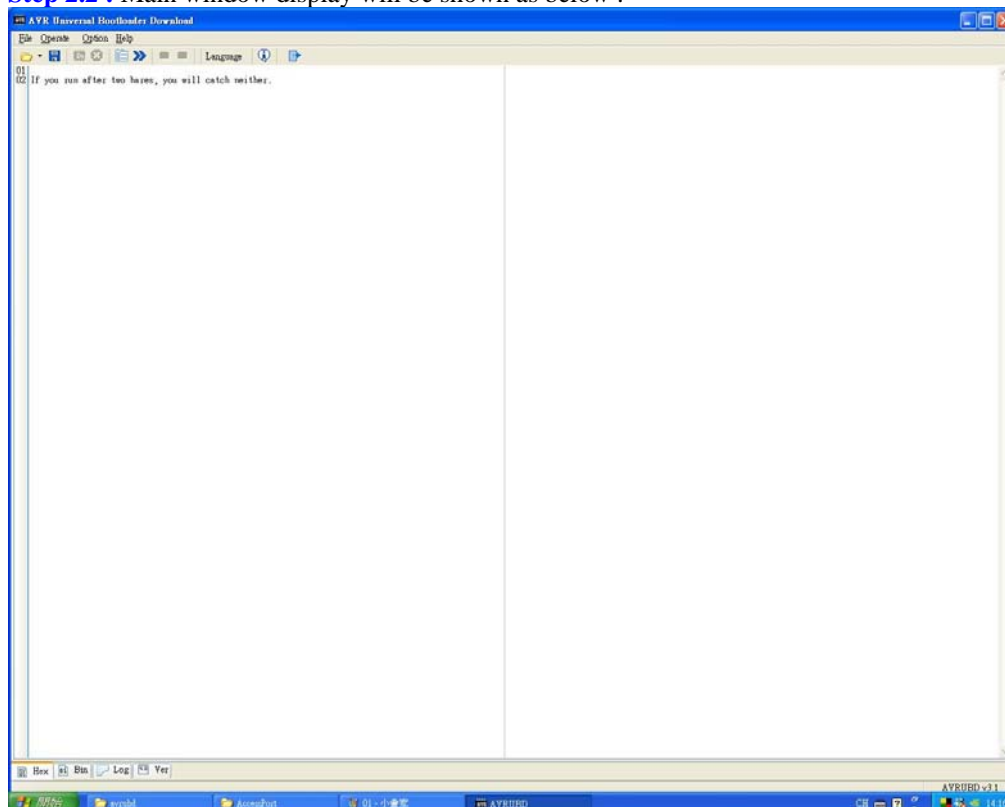
Step 1.2 : Run the “avrud.exe” program in the computer, see step 3 – 14 in details. firmware upgrade

2 Firmware Upgrade procedure

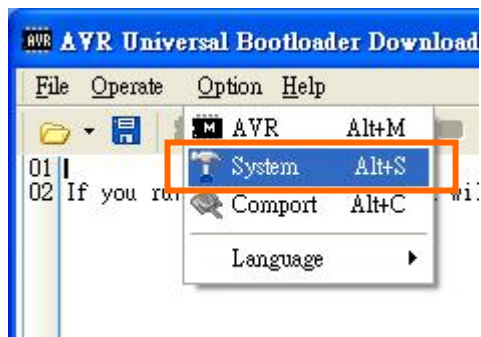
Step 2.1 : Run the “avrubd.exe” program → Click “Run”



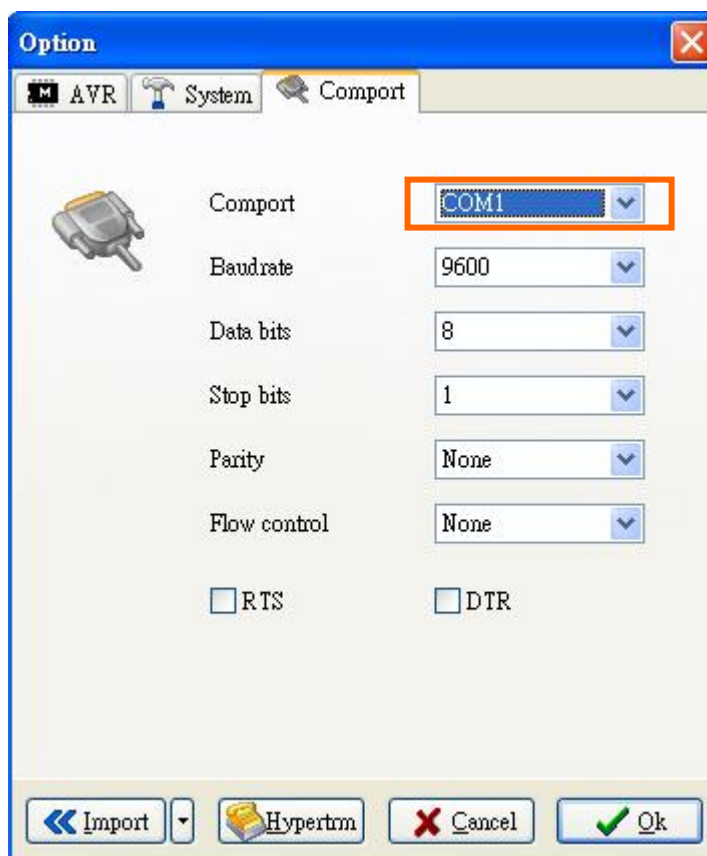
Step 2.2 : Main window display will be shown as below :



Step 2.3 : Go to “Option” → choose “System” to config the communication settings :

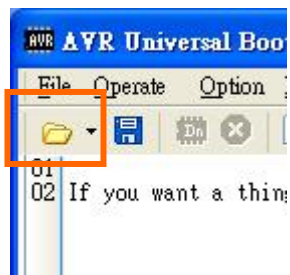


Step 2.4 : Select the corresponding communication port. Then press “OK”

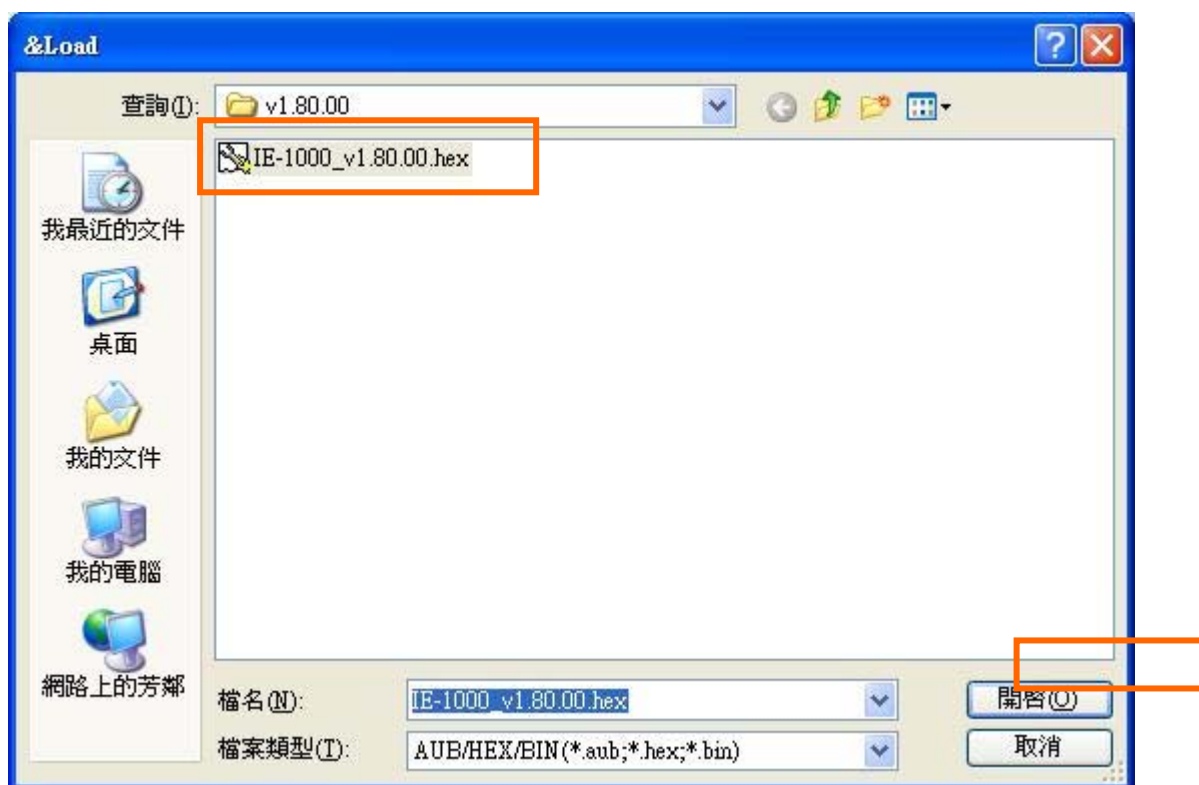


Step 2.5 : Power on the IE-1000.

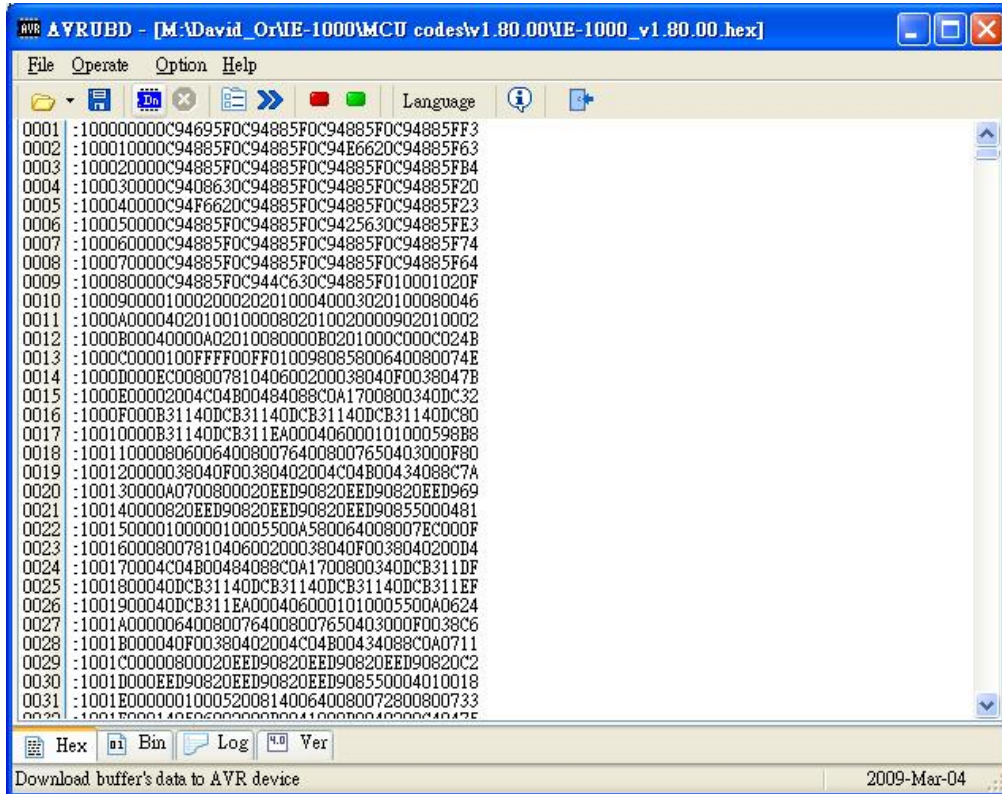
Step 2.6 : Click “Open file” icon :



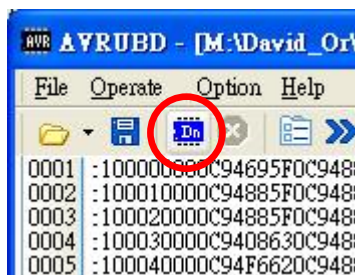
Step 2.7 : Choose the corresponding firmware code to be downloaded , then press “Open”



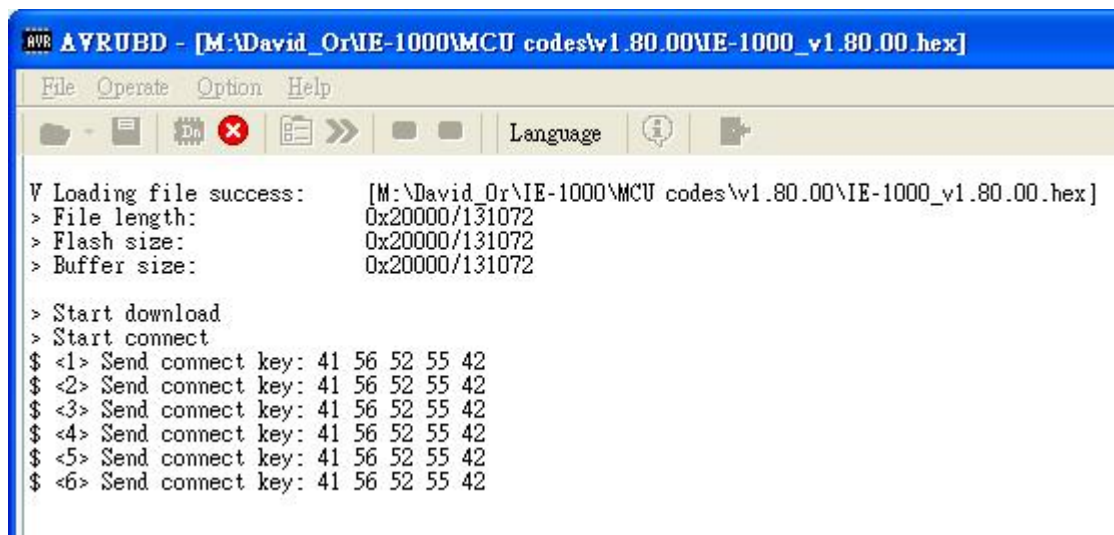
Step 2.8 : Numbers of data strings lines displayed on screen.



Step 2.9 : Press “Download” icon on the program.

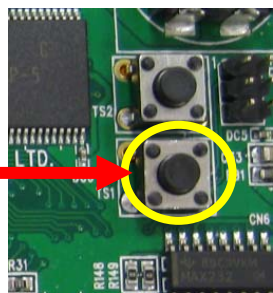


Step 2.10 : Press reset switch “TS1” button on IE-1000 board within 5 seconds after clicking the download icon.

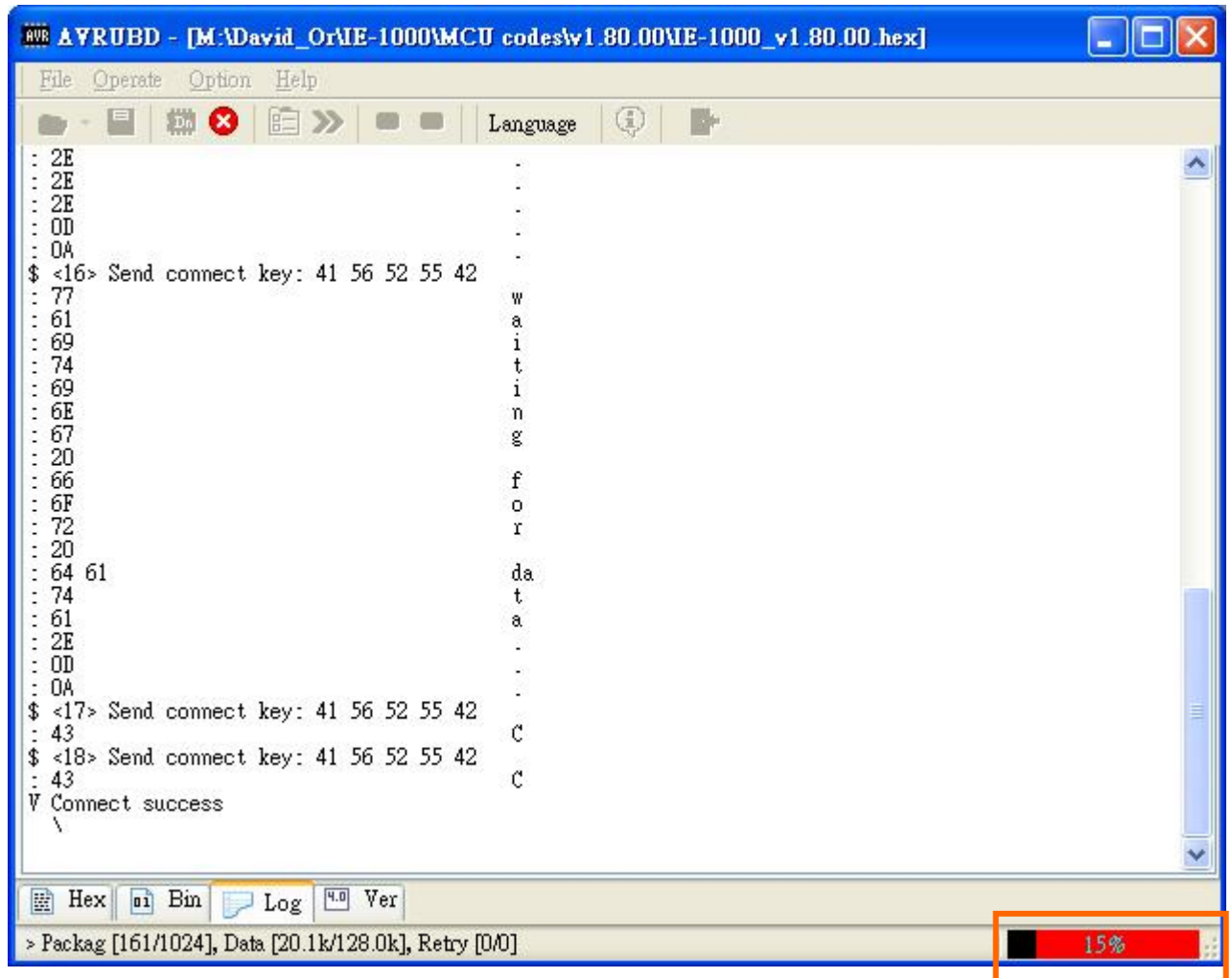


```
AVRUBD - [M:\David_Or\IE-1000\MCU codes\v1.80.00\IE-1000_v1.80.00.hex]
File Operate Option Help
Language
V Loading file success: [M:\David_Or\IE-1000\MCU codes\v1.80.00\IE-1000_v1.80.00.hex]
> File length: 0x20000/131072
> Flash size: 0x20000/131072
> Buffer size: 0x20000/131072
> Start download
> Start connect
$ <1> Send connect key: 41 56 52 55 42
$ <2> Send connect key: 41 56 52 55 42
$ <3> Send connect key: 41 56 52 55 42
$ <4> Send connect key: 41 56 52 55 42
$ <5> Send connect key: 41 56 52 55 42
$ <6> Send connect key: 41 56 52 55 42
```

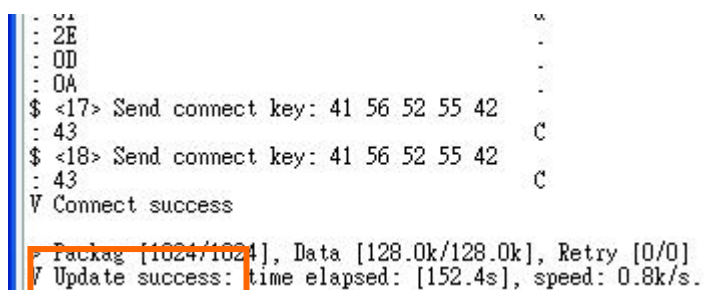
Press “TS1” reset switch on IE-1000 within 5 seconds after clicking download icon.



Step 2.11 : Firmware download is in progress.



Step 2.12 : “Update success” message will show on screen after finished the firmware upgrade



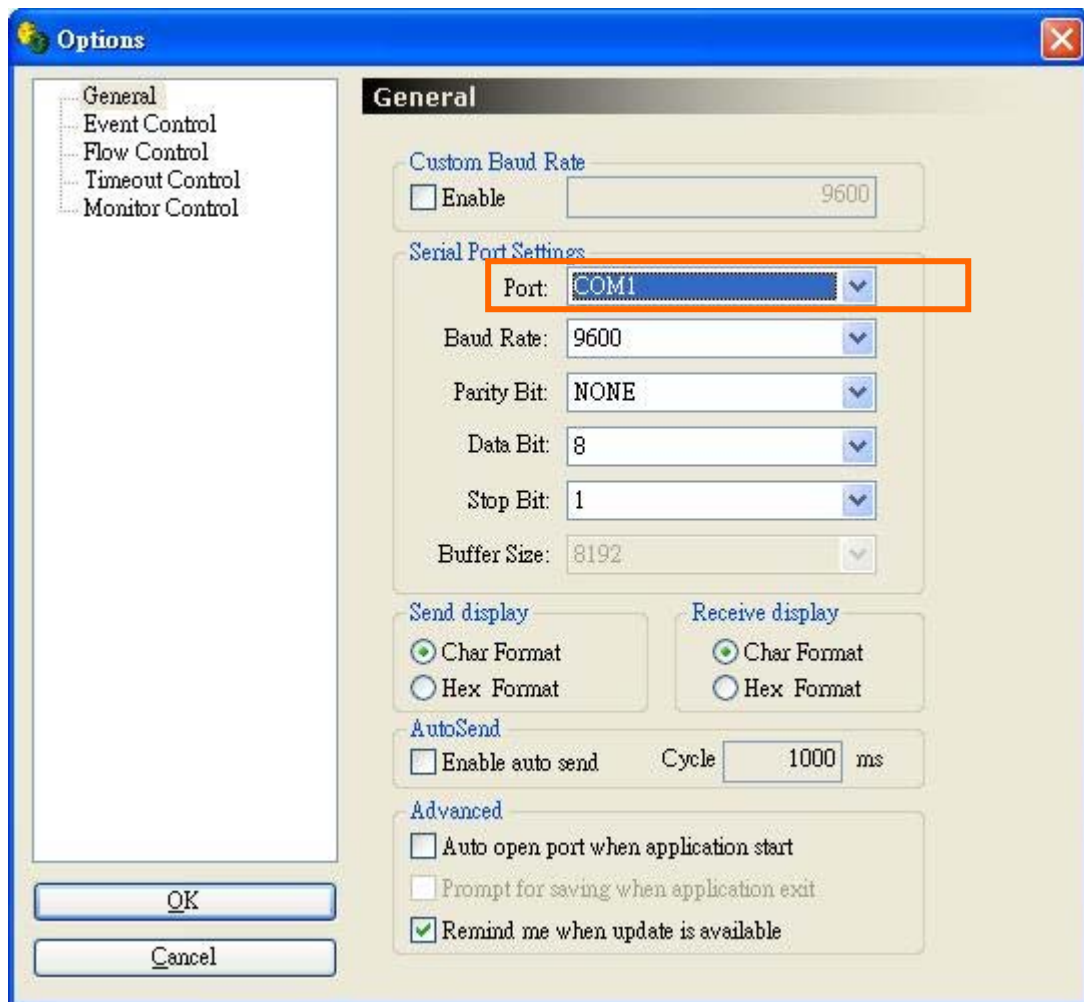
Firmware upgrade progress finished. Please power off the IE-1000.

To verify the firmware version downloaded correctly, please follow step 15 - 18



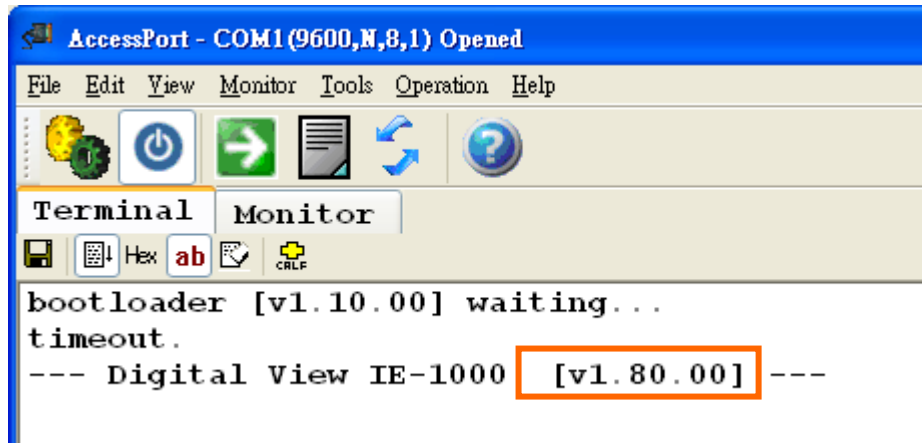
Step 2.13 : Run the access port program in the computer.

Step 2.14 : Make sure the baud rate sets 9600, parity bit = None, Data bit = 8, Stop bit = 1. Then click “OK”.



Step 2.15 : Power on the IE-1000 controller.

Step 2.16 : Check firmware version display on the OSD menu is the same you have just programmed.



End.

Date : 4 March 2009

Rev.01

CONTACT DETAILS

ASIA: Digital View Ltd
16th floor Millennium City 3
370 Kwun Tong Road
Kwun Tong
Hong Kong

Tel: (852) 2861 3615

Fax: (852) 2520 2987

Sales: hksales@digitalview.com

EUROPE: Digital View Ltd
6 Marylebone Passage
London
W1W 8EX
UK

Tel: (44) (0)20 7631 2150

Fax: (44) (0)20 7631 2156

Sales: uksales@digitalview.com

USA: Digital View Inc.
18440 Technology Drive
Building 130
Morgan Hill, CA 95037

Tel: (1) 408-782 7773

Fax: (1) 408-782 7883

Sales: ussales@digitalview.com

Specifications subject to change without notice

Application Note – Firmware upgrade procedure IE-1000 41719002X-3
(March 2009)

© Digital View Ltd 2009