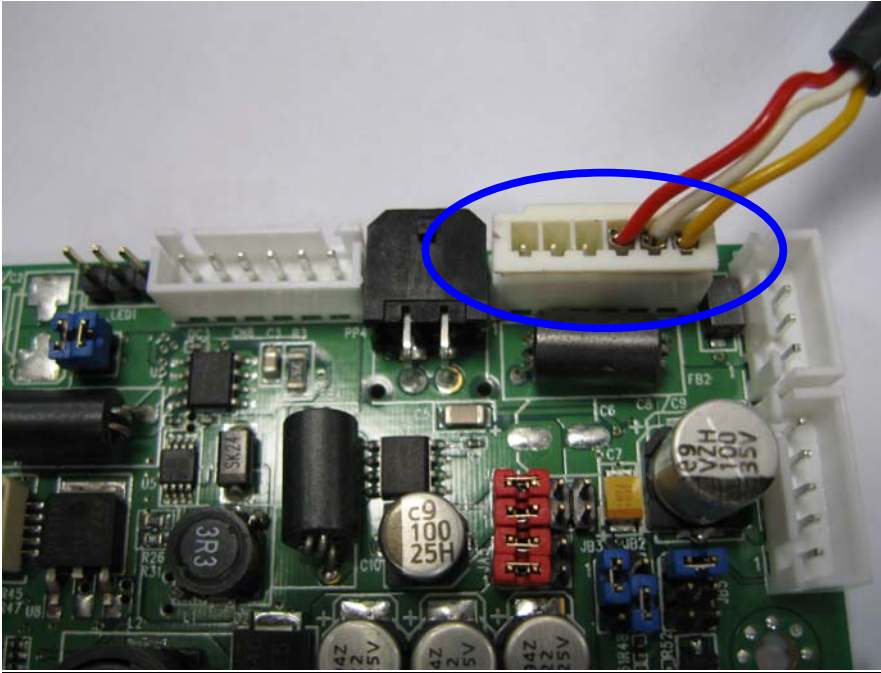
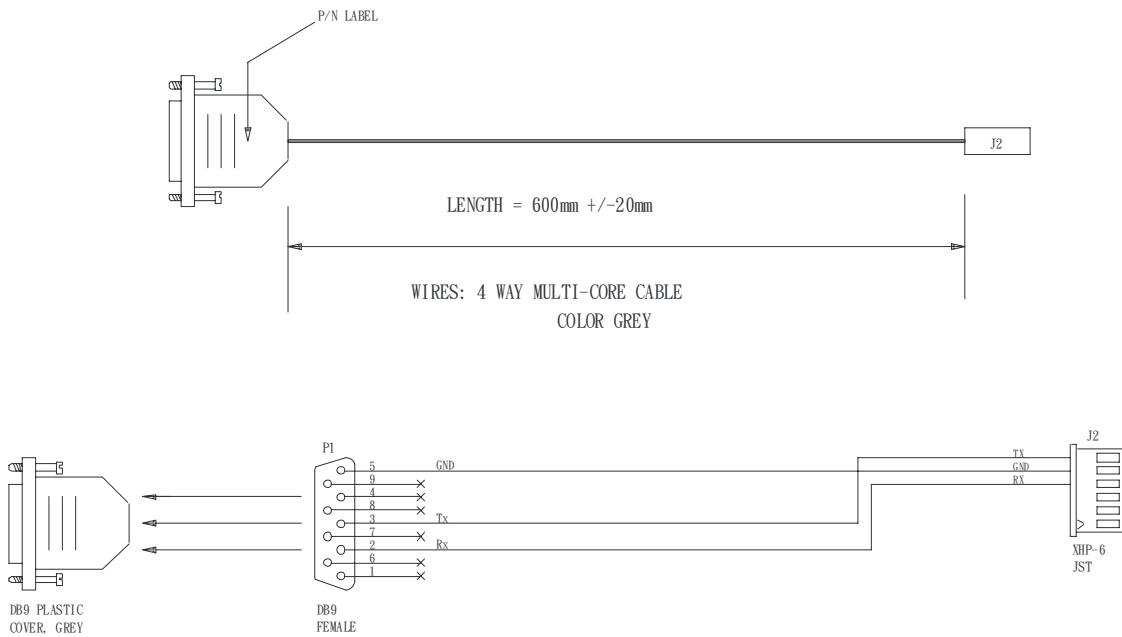


Procedure to change fixed IP address under IP50 direct mode for SVX-1920 P/N 41721XX3X-3 version.

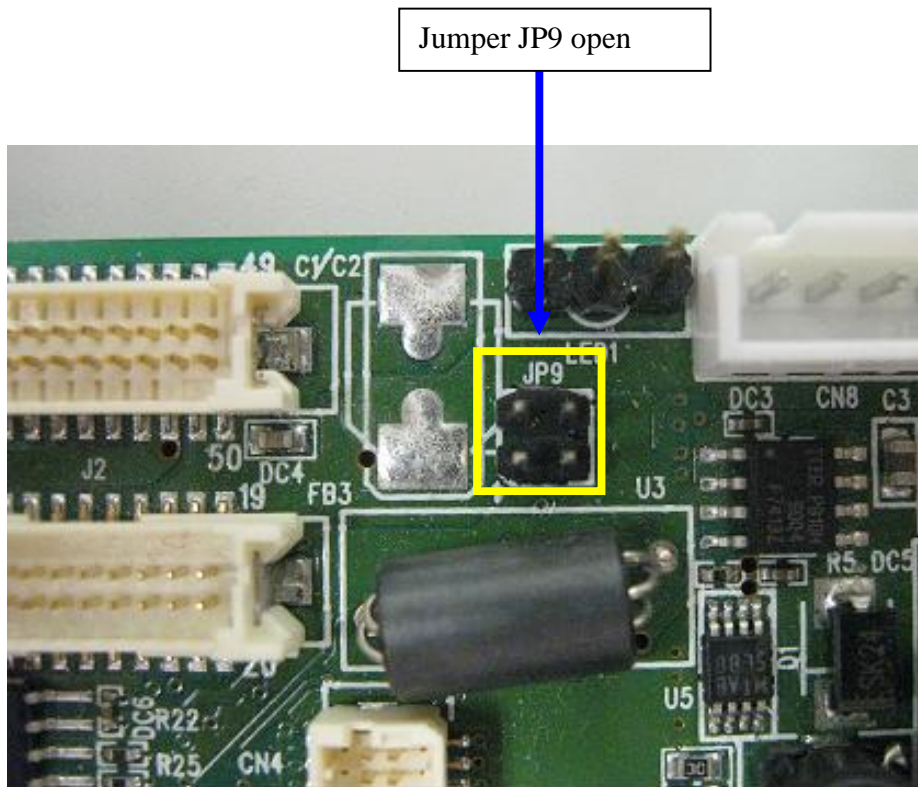
Step 1 : Use RS-232 cable (P/N 426090200-3) to connect from the DB9 serial port connector on the PC to connect to CN1 on the controller board.



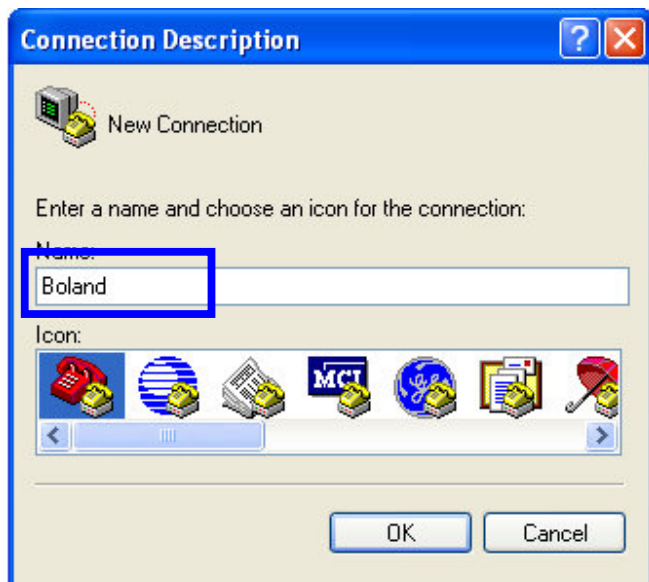
RS-232 cable P/N 426090200-3 drawing :



Step 2 : Jumper JP9 open (see below)



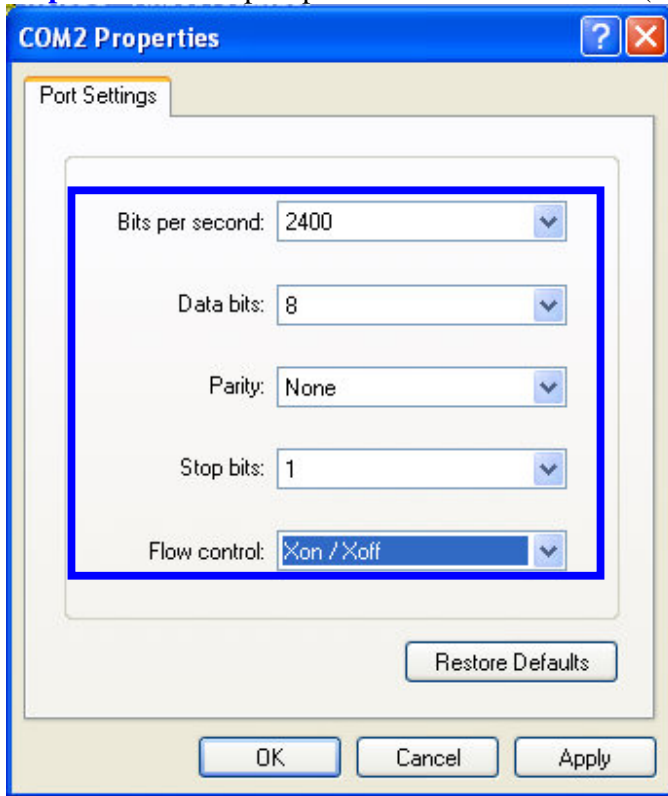
Step 4 : Open “Hyper Terminal” program. Create new account as shown below :



Step 5 : Select the matching communication port.



Step 6 : Select the port parameter as shown below (2400/8/N/1):



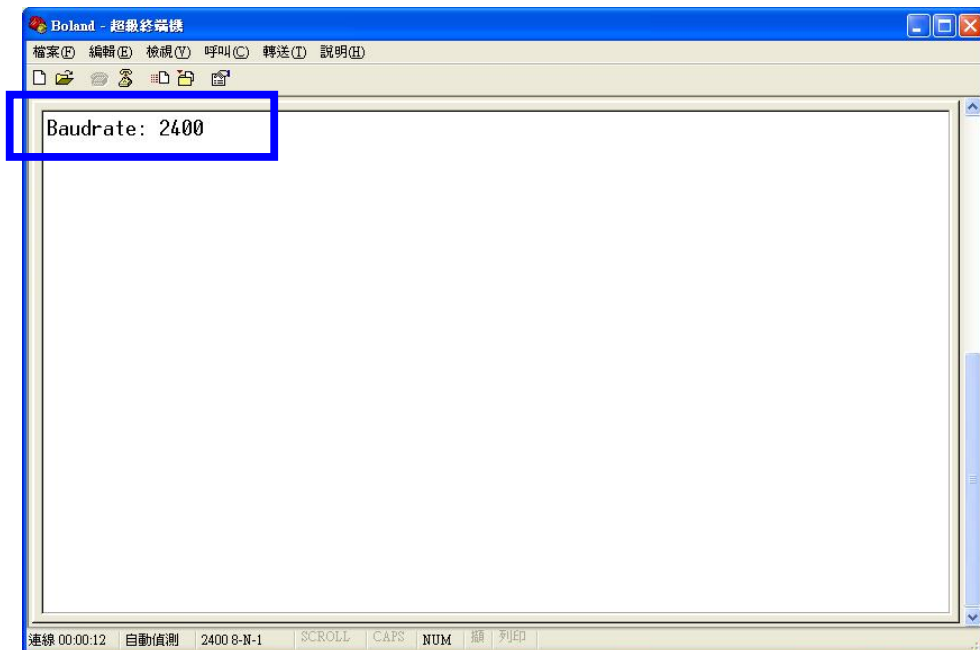
Step 7 : Connect to power input and then press and hold “MENU” key and turn on the controller.



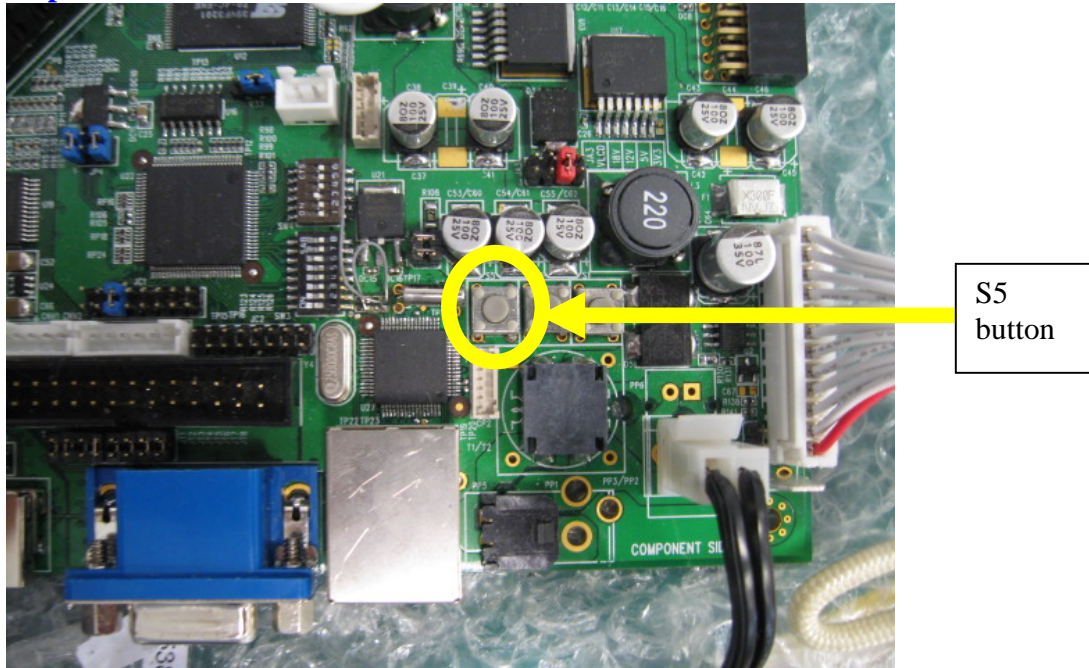
Step 8 : Press and hold “MENU” key and turn on the controller. “Programming Mode” wording will display on screen.



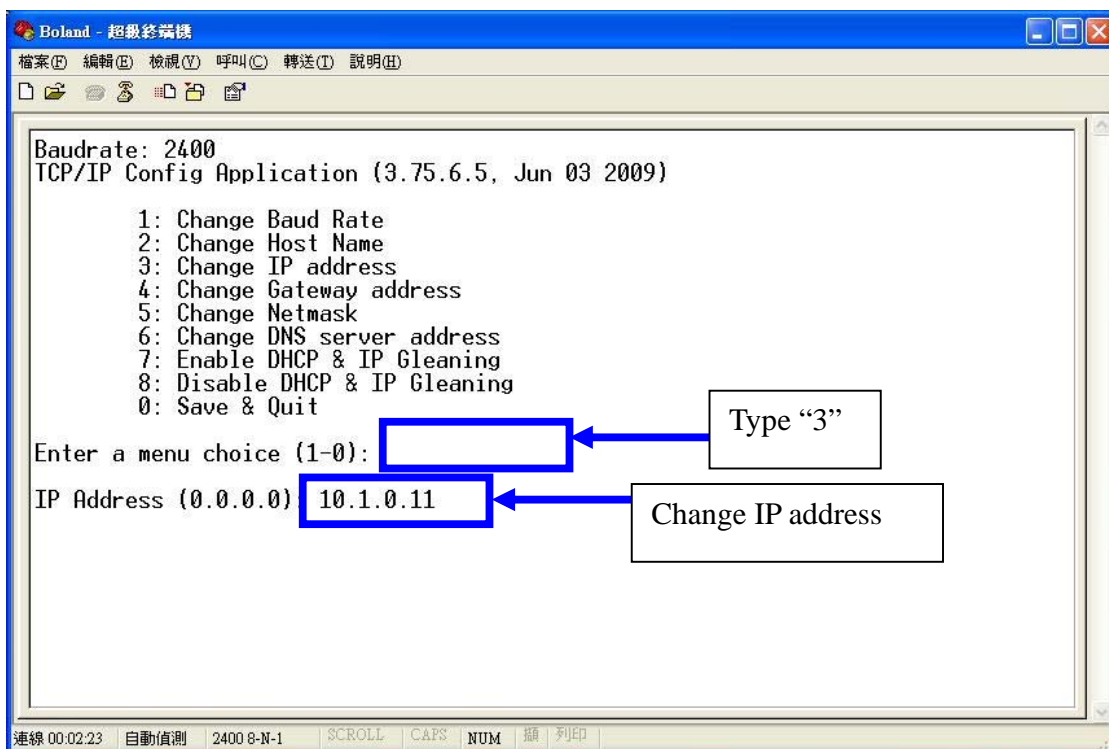
Step 9 : “Baudrate: 2400” will display on “Hyper Terminal” program.



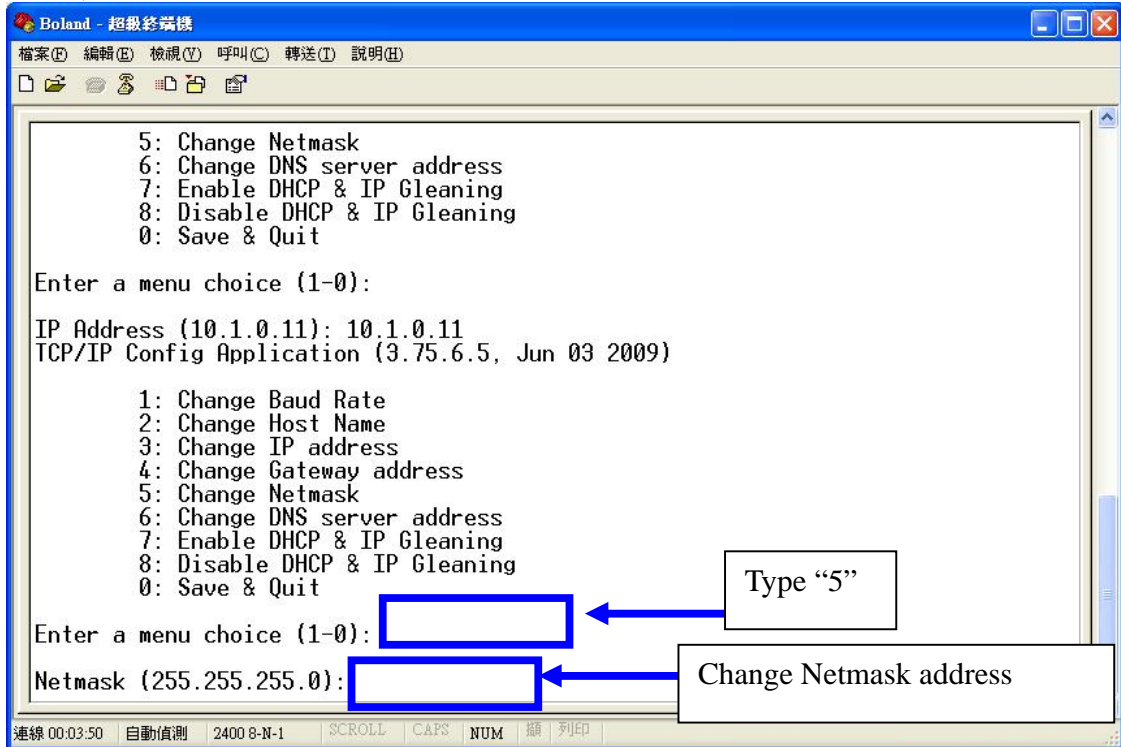
Step 10 : Press “S5” button on SVX-1920.



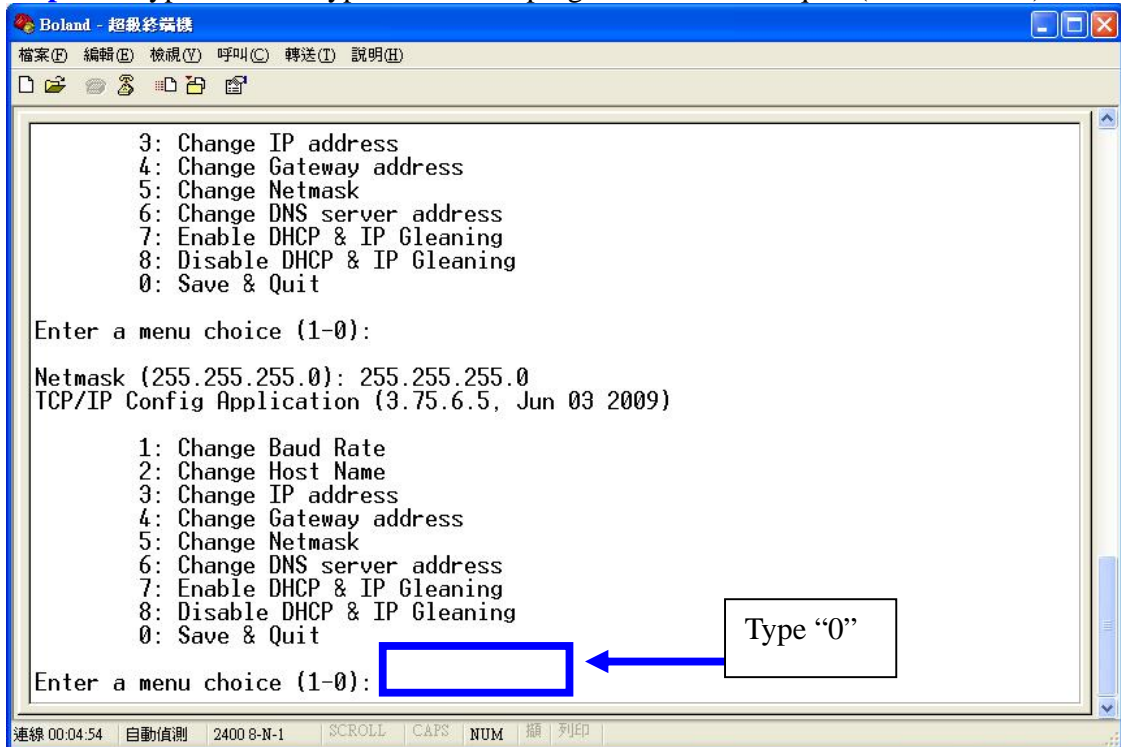
Step 11 : Config mode menu will display on “Hyper Terminal” program.
Type “3” on “Hyper Terminal” program to change the IP address (shown below) :



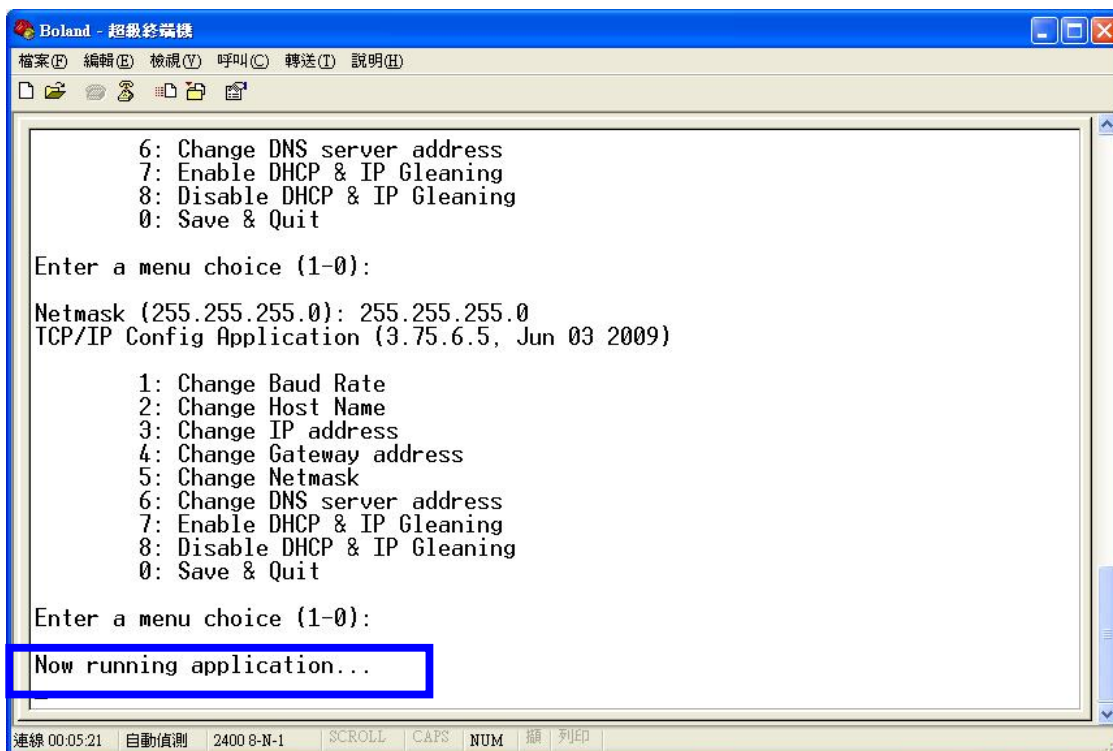
Step 14 : Type “5” on “Hyper Terminal” program to change the Netmask (shown below) :



Step 15 : Type “0” on “Hyper Terminal” program to Save and quit. (shown below) :



Step 16 : You can close the “Hyper Terminal” program when you see “Now running application...” wording.



Step 17 : Closed “Hyper Terminal” program.

- END -