

## ***Application Note*** – Schedule Play on M3

Rev 2.0

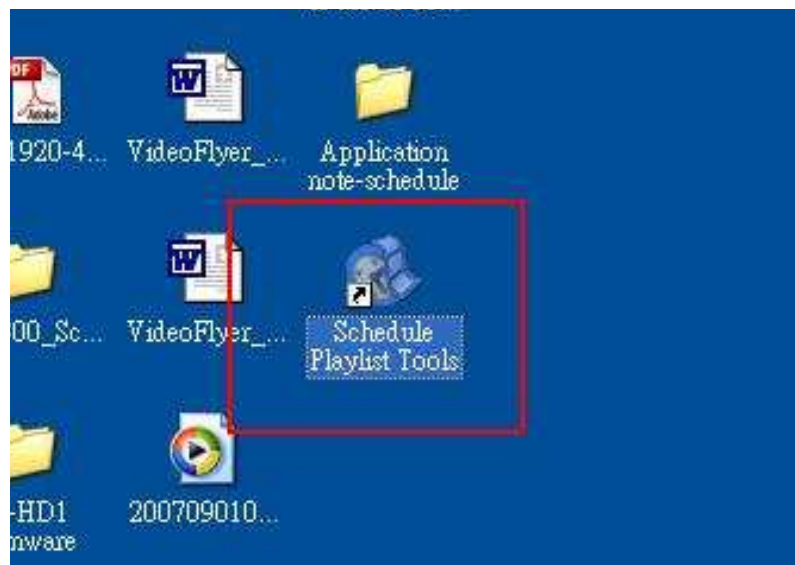
This brief guide is intent to explain the use of Schedule Playback on M3-100/300 and ViewStream 100/300.

# **1** Schedule setup

### ***Create Playlist schedule :***

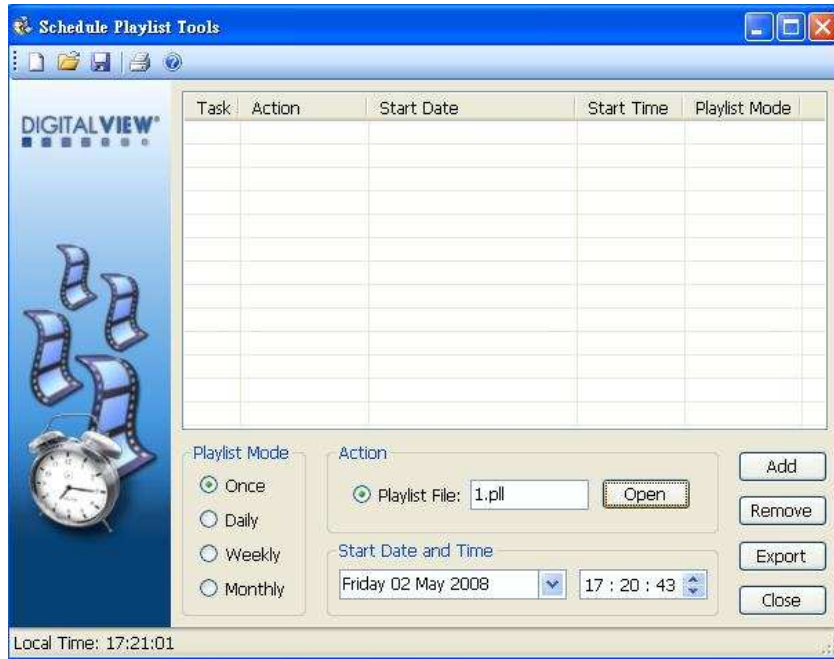
Create the playlist file (.pl) using DV studio Plus. Then use **Schedule Playlist Tools** to schedule playlists.

Step 1: Open the Schedule Playlist Tools

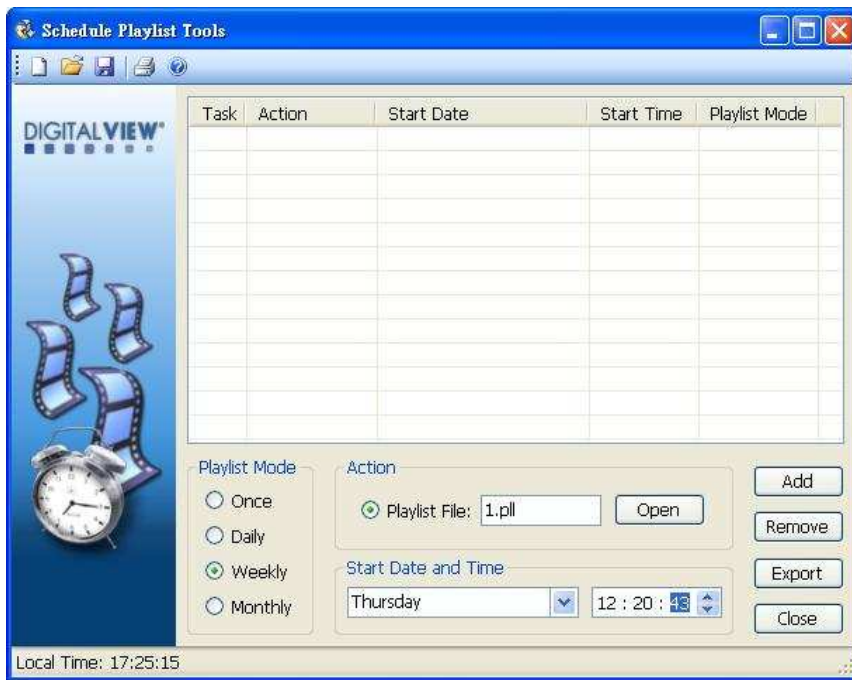


Note: This software tool requires Microsoft .NET Framework to execute. If your computer does not have the Microsoft .NET Framework installed. Please go to the <http://www.microsoft.com> to download and install the latest .NET Framework.

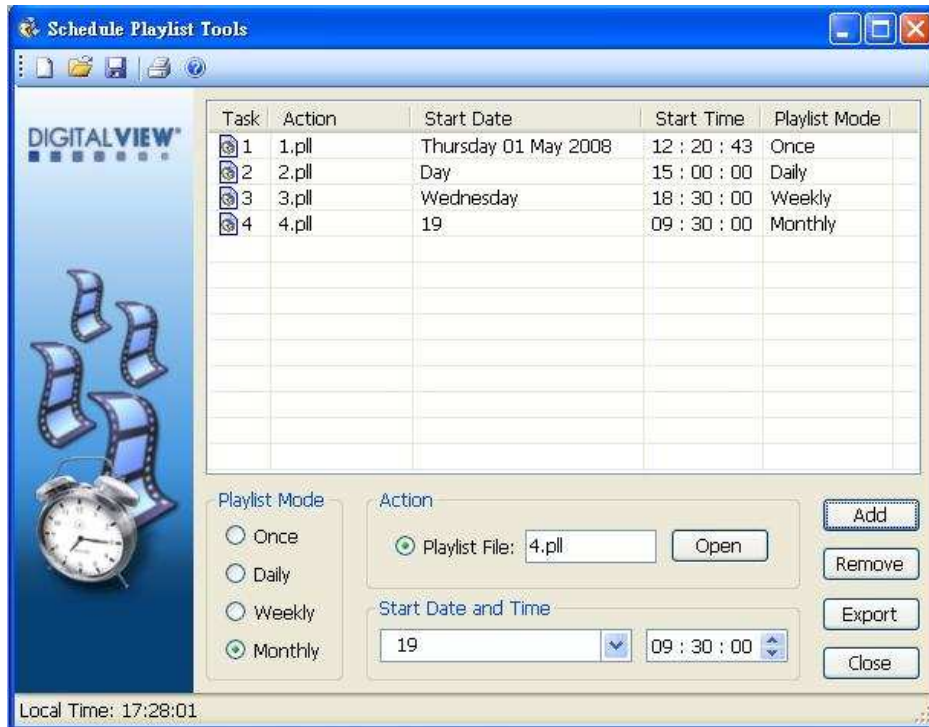
Step 2: Click **Open** to select the playlist.



Step 3: Choose one playlist mode (Once/Daily/Weekly/Monthly) and enter start date and time.



Step 4: A list of scheduled tasks will be shown in the windows. Press **Export** to confirm and export to a "Schedule.ini" file.



### ***Schedule.ini***

You can modify or edit the playlist schedule on "Schedule.ini" file directly. Below is the example of format:

```
[TASK1]
ACTION=1.pll
START_DATE=080501
START_TIME=122043
PARAMETER=0
```

```
[TASK2]
ACTION=2.pll
START_DATE=DLY
START_TIME=150000
PARAMETER=D
```

```
[TASK3]
ACTION=3.pll
START_DATE=WEDNESDAY
START_TIME=183000
PARAMETER=3
```

[TASK4]  
 ACTION=4.pll  
 START\_DATE=MLY19  
 START\_TIME=093000  
 PARAMETER=M19

ACTION=	Playlist file that to be scheduled
START_DATE=	Start date  YYMMDD DLY (Daily mode) MLYxx (Monthly mode, where xx=day of month) MONDAY TUESDAY WEDNESDAY THURDAY FRIDAY SATURDAY SUNDAY
START_TIME=	Start time  HHMMSS
PARAMETER=	Playlist mode  O = Once – play on a specific date & time D = Daily 1 = Weekly (Monday) 2 = Weekly (Tuesday) 3 = Weekly (Wednesday) 4 = Weekly (Thursday) 5 = Weekly (Friday) 6 = Weekly (Saturday) 7 = Weekly (Sunday) Mx = Monthly, where x=day of month

Note: The maximum number of schedule you can used is 40 (i.e. From [Task1] to [Task 40] can be used in Schedule.ini)

---

## CONTACT DETAILS

**ASIA:** Digital View Ltd  
16<sup>th</sup> Floor Millennium City 3  
370 Kwun Tong Road  
Kwun Tong  
Hong Kong

**Tel:** (852) 2861 3615      **Fax:** (852) 2520 2987  
**Sales:** [hksales@digitalview.com](mailto:hksales@digitalview.com)

**EUROPE:** Digital View Ltd  
6 Marylebone Passage  
London  
W1W 8EX  
UK

**Tel:** (44) (0)20 7631 2150      **Fax:** (44) (0)20 7631 2156  
**Sales:** [uksales@digitalview.com](mailto:uksales@digitalview.com)

**USA:** Digital View Inc.  
18440 Technology Drive  
Building 130  
Morgan Hill, CA 95037

**Tel:** (1) 408-782 7773      **Fax:** (1) 408-782 7883  
**Sales:** [ussales@digitalview.com](mailto:ussales@digitalview.com)