

Application Note

Data Logging

(VS-300/320 and M3-300/320)

Version 2.2.1

Table of Contents

1	Setup.....	2
1.1	Startup Configuration Mode	2
1.2	Enable/Disable Data Logging	3
1.3	Preparation	4
1.4	Connection.....	5
2	Data Logging	6
2.1	GETLOG	6
2.2	Update.log	7
2.3	Log file	8

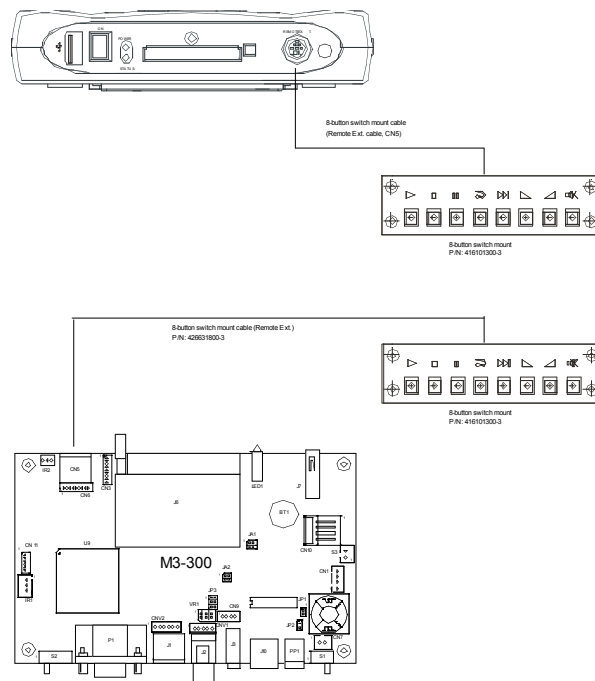
1 Setup

1.1 Startup Configuration Mode

The enable/disable of Data Logging can be set in the Startup Configuration Mode. Connect a 8-button switch mount* to your ViewStream™ 300/320 or M3-300/320 and enter to Configuration mode menu.

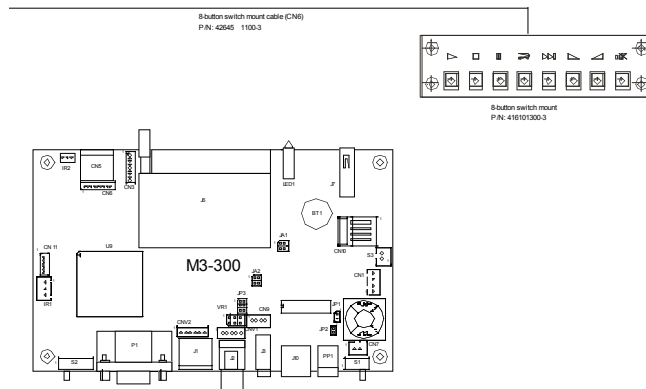
The 8-button switch mount connections are shown in the following examples:

Example 1 – Connect 8-button switch mount to Remote Ext. connector on ViewStream™ 300/320 or M3-300/320.



***Note:** Contact your local Digital View distributor or regional office if you do not have the 8-button switch mount kit.

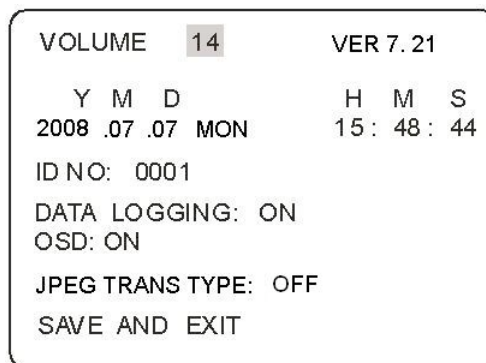
Example 2 – Connect 8-button switch mount to CN6 connector on M3-300/320



1.2 Enable/Disable Data Logging

The function of Data Logging can be switched to “ON” or “OFF” in the Configuration mode menu. (The default setting on Data Logging is OFF.)

- Holding button 8 and power on to enter the Configuration mode menu.

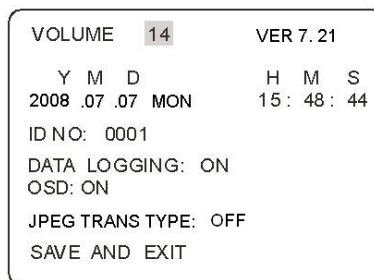


- Use button 8 to move to the “**DATA LOGGING**”. (The default is **OFF**)
- Press button 7 or button 6 to set “ON” or “OFF”.
- Use button 8 to move to **SAVE AND EXIT** and then press button 7 or button 6 to confirm save and exit.

1.3 Preparation

Enable Data Logging:

- Set “**DATA LOGGING**” to ON in the Configuration mode menu.

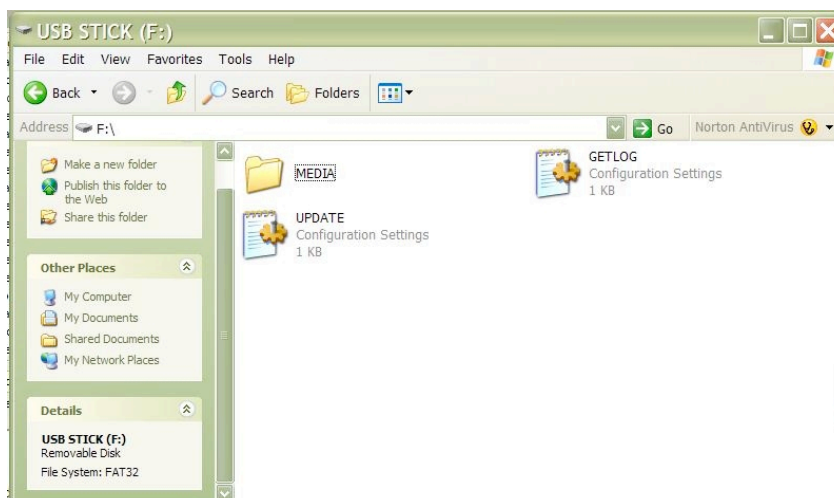


CompactFlash Card / SD card:

- Ensure the CompactFlash Card (or SD card if using ViewStream™ 320 or M3-320) has been inserted on ViewStream™ 300/320 or M3-300/320.
- Make sure a “MEDIA” folder is present on CompactFlash card (or SD card if using ViewStream™ 320 or M3-320).

USB flash drive:

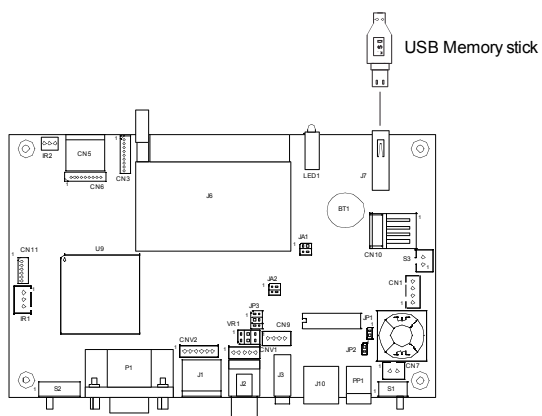
- Ensure the USB flash drive has been formatted with FAT32.
- Create a new folder “MEDIA” on USB flash drive.
- Create a **blank** text file named “GETLOG.INI” on root directory. (The file just contains some space characters and file size must not be 0KB)



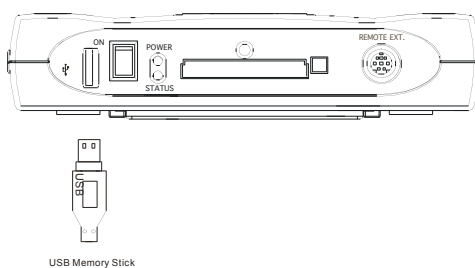
1.4 Connection

Connecting USB flash drive directly to the USB port on M3-300/320 or ViewStream™ 300/320.

M3-300/320 connection :



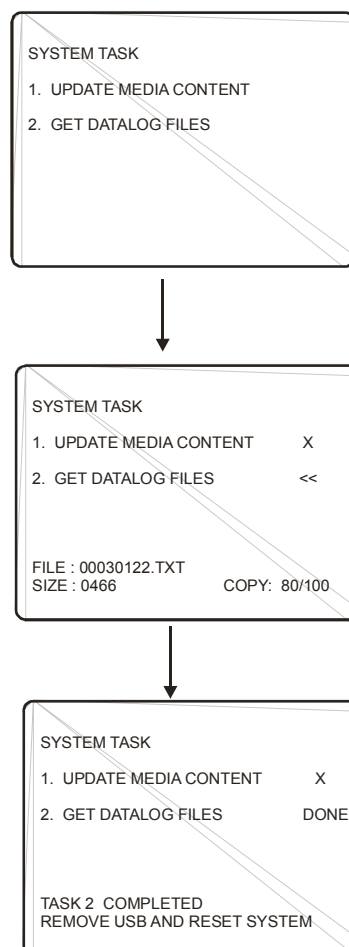
ViewStream™ 300/320 connection :



2 Data Logging

2.1 GETLOG

1. Make sure the M3-300/320 or ViewStream™ 300/320 is powered off before inserting the CompactFlash Card (or SD card if using M3-320/ViewStream™ 320) and USB flash drive.
2. Power on the M3-300/320 or ViewStream™ 300/320 when both CompactFlash (or SD card if using M3-320/ViewStream™ 320) and USB flash drive are inserted.
3. When the GETLOG.ini file is detected on the USB flash drive, the Log file will be updated to the memory stick automatically. A sequence of screens will be shown as below:



4. Once the file copy is completed, power off the M3-300/320 or ViewStream™ 300/320 unit and disconnect the memory stick.

Note: All media files must be stored and running inside the "MEDIA" folder on the CompactFlash card or SD card. The GETLOG.ini must be stored outside "MEDIA" folder.

2.2 Update.log

Another log file will be created on USB flash drive once the content upload process is done successfully. This file records the history of content updated as shown in the following example:

```
[Media Update Log]

ID No: 0000, Media content updated, 20060714, 11:43:13

1. Files present in both CF and USB
  -> Replace the files in CF by those in USB

  >> Files renewed in CF:
  IMG_0997.JPG
  IMG_0996.JPG
  IMG_0995.JPG
  IMG_1000.JPG
  IMG_0999.JPG
  IMG_0998.JPG
  2000KPT.AVI
  4720576.AVI

2. Files present in CF only
  -> Delete the files

  >> Files deleted from CF:
  No files needed to be deleted

3. Files present in USB only
  -> Copy the files from USB to CF

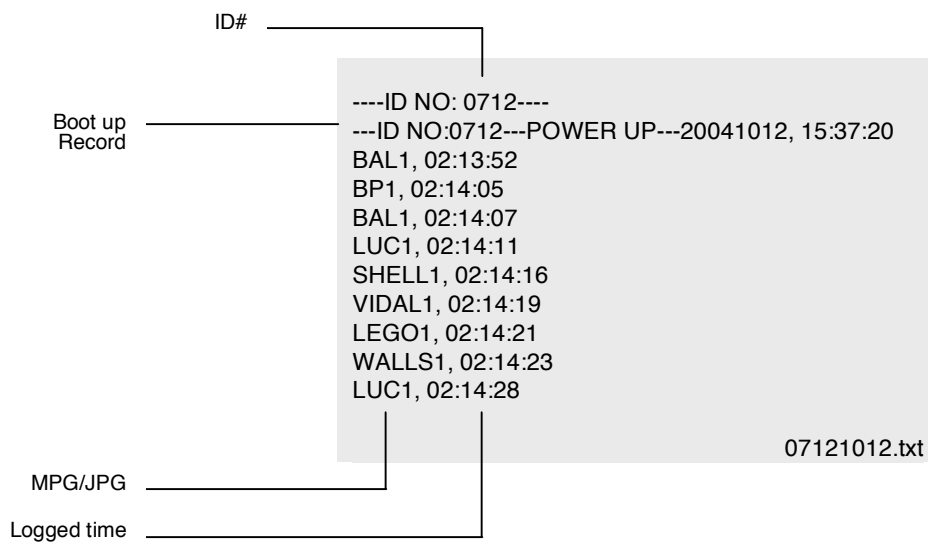
  >> Files newly added to CF:
  No files needed to be added :
```


2.3 Log file

The log file is written to the CF card (or SD card) as a file called “xxxxMMDD”.txt

Where xxxx = The four digit unique identifier of this player (ID)
 MM = Month
 DD = Day

The .txt file contains the data of each button’s “activities”. All data kept in this file are in daily basis.



CONTACT DETAILS

ASIA: Digital View Ltd
16th floor Millennium City 3
370 Kwun Tong Road
Kwun Tong
Hong Kong

Tel: (852) 2861 3615 **Fax:** (852) 2520 2987
Sales: hksales@digitalview.com

EUROPE: Digital View Ltd
6 Marylebone Passage
London
W1W 8EX
UK

Tel: (44) (0)20 7631 2150 **Fax:** (44) (0)20 7631 2156
Sales: uksales@digitalview.com

USA: Digital View Inc.
18440 Technology Drive
Building 130
Morgan Hill, CA 95037

Tel: (1) 408-782 7773 **Fax:** (1) 408-782 7883
Sales: ussales@digitalview.com