

Application Note

Data Logging

(M3-310 OEM Media Player Board & VideoFlyer™ 10.2"/15"/15.6"/21.5")

Version 1.1

Table of Contents

1	Introduction	3
2	Data Logging.....	3
	2.1 Preparation	3
	2.2 Data Logging – On/Off	4
3	Data Retrieval	5
	3.1 Preparation	5
	3.2 USB Connection.....	6
	3.3 USB update.....	7
4	Log file	9
	4.1 Data-log file (.txt)	9
	4.2 Update.log	11

1 Introduction

The Data logging function for the Digital View M3-310 OEM media player board records media player activity with details such as:

- Identification of specific media player
- Playback of content with details of time and date
- Data-log file history

This creates a file that can be analyzed to reveal information such as the number of times a track has been played and also any interactive activity.

Please note this document refers to the same functionality on the 10.2" widescreen VideoFlyer™ (VF-100W), 15" VideoFlyer™ (VF-150), 15.6" widescreen VideoFlyer™ (VF-150W) and the 21.5" widescreen VideoFlyer™ (VF-215W) models.

2 Data Logging

The following process shows how to:

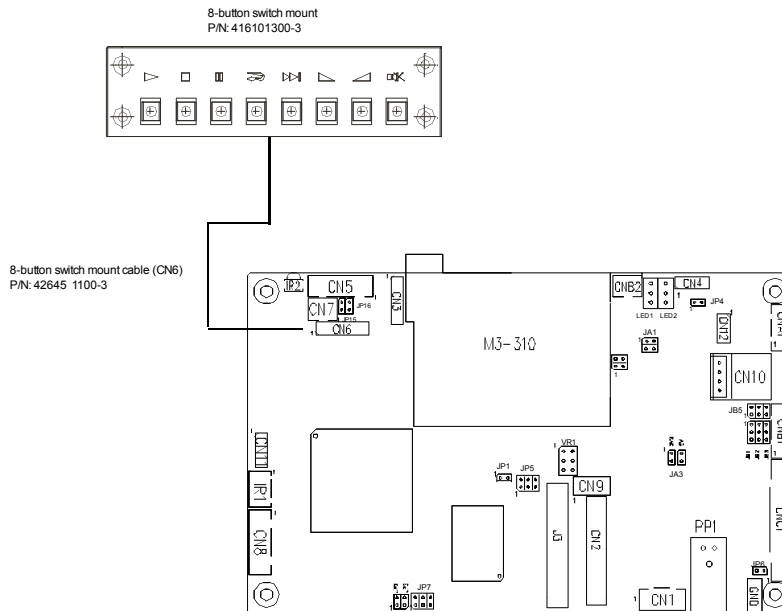
- Enable data-logging on the media player

See Section 3 for details regarding retrieval of the data-logging data file from the media player.

2.1 Preparation

Data Logging – On/Off can be set in the media player's on-screen (OSD) Configuration mode menu. To do this an 8-button switch-mount* needs to be connected to the M3-310 as shown in the following examples:

Example 1 – Connect an 8-button switch-mount to CN6 on-board connector on M3-310.



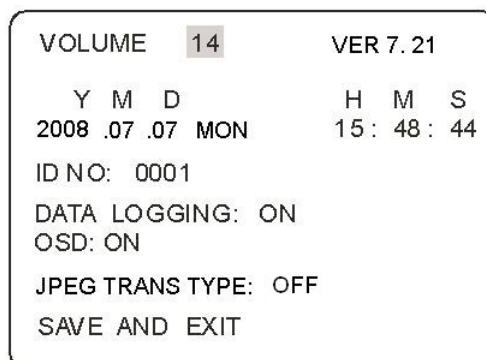
M3-310

***Note:** Contact your local Digital View distributor or regional office if you do not have the 8-button switch mount kit.

2.2 Data Logging – On/Off

Data Logging can be switched to "ON" or "OFF" in the on-screen (OSD) Configuration mode menu. (The default setting is OFF.)

- Hold button 8 and power On to enter the OSD Configuration mode menu.



- Use button 8 to move to "**DATA LOGGING**". (The default is **OFF**)
- Press button 7 or button 6 to set "ON" or "OFF".
- Use button 8 to move to **SAVE AND EXIT** and then press button 7 (or button 6) to confirm

3 Data Retrieval

The following process shows how to:

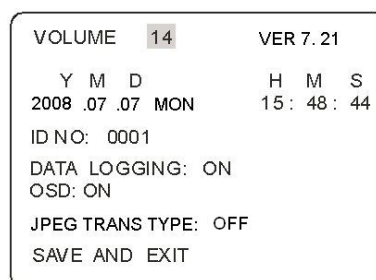
- Retrieve the data logging file and data-log history

This is done using the USB update function on the media player as outlined below. Full details of the Digital View media player USB update function can be found in the Application notes download section on the Digital View website.

3.1 Preparation

Enable Data Logging:

- Set "**DATA LOGGING**" to ON in the Configuration mode menu as shown in Section 2 above.



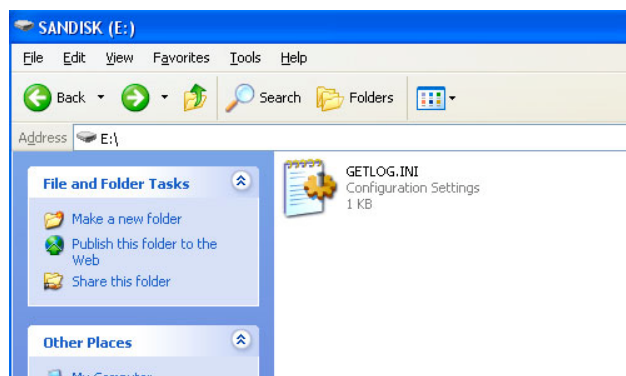
Media Player Compact-Flash (CF) card:

- Ensure a CF card has been installed in the M3-310
- Make sure a "MEDIA" folder is present on the CF card

USB flash drive:

- Ensure the USB flash drive has been formatted with FAT32.
- Create a **blank** text file named "GETLOG.INI" on the root directory of the USB flash drive. (The file should just contains some 'space' and file size must not be 0KB) or you can download the "GETLOG.INI" from:

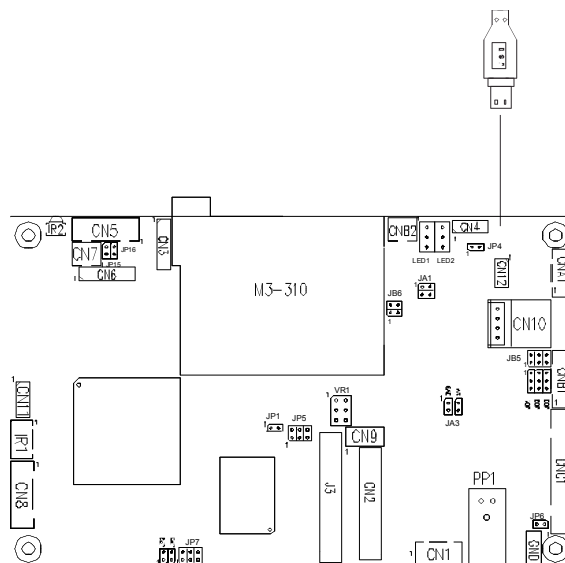
<http://www.digitalview.com/support/support-documents>



3.2 USB Connection

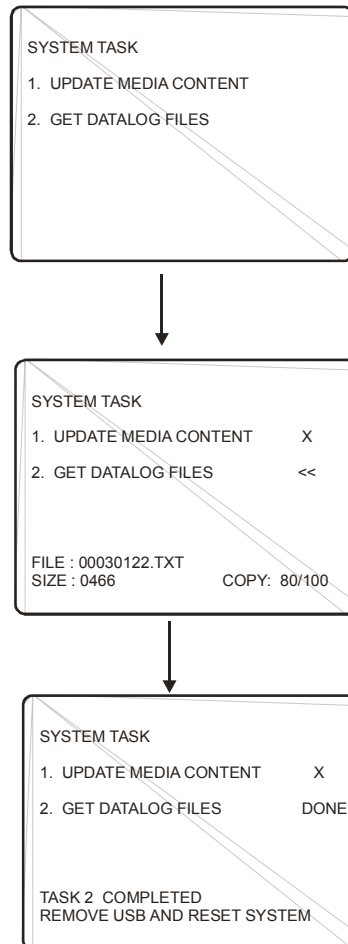
Connecting USB flash drive to the USB port on M3-310. (A USB extend cable is required)

M3-310 connection :



3.3 USB update

1. Make sure the M3-310 is powered off before inserting the USB flash drive.
2. Power on the M3-310 when the USB flash drive is inserted.
3. When the GETLOG.ini file is detected on the USB flash drive, the Log file will be copied from the CF card and updated to the USB flash drive automatically. A sequence of screens will be shown as below:



4. Once the file copy is completed, power off the unit and disconnect the USB flash drive.

Note: All media files must be stored and running inside the "MEDIA" folder on the Compact Flash card. The GETLOG.ini must be stored outside "MEDIA" folder.

Two files will be copied across:

- Getlog.ini: A control file that contains only "space" to control data-log file download.
- Update.log: A text file recording the data-log file history

See section 4 for file details.

4 Log file

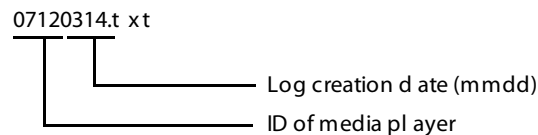
The log files are text files showing:

- Getlog.ini – A control file that control data-log file download.
- Data-log file (.txt)– The file records date and time of MPEG/JPEG files played. This data provides a useful track record that can be analyzed to show file plays and also reveal all interaction such as button presses.
- Update.log – A history of the data-log files.

The following explains the files and data collected.

4.1 Data-log file (.txt)

This is the data logging data file. The filename of each log file is composed of ID (4 characters long) and the log creation date (MMDD).



The data file is written in ASCII format in which you can read (or import) it as a text file. Shown below is an example of the data in a log file.

```

---- ID NO : 0712 -----
--- ID NO: 0712 --- POWER UP --- 20080805, 02:10:20
BAL, 02:13:52
BP, 02:14:05
LEGO, 02:14:07
WALL, 02:14:23
BAL, 02:14:52
BP, 02:15:05
LEGO, 02:15:23
WALL, 02:15:57
BAL, 03:14:52
BP, 03:15:05
LEGO, 03:15:23
WALL, 03:15:57

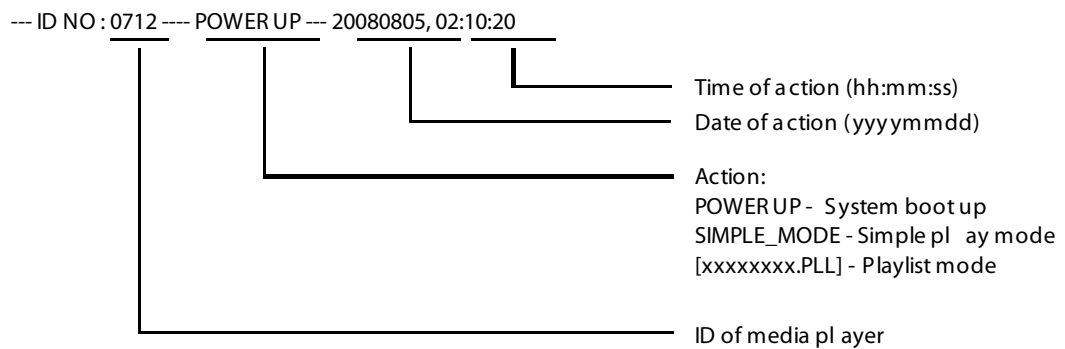
```

Explanation:

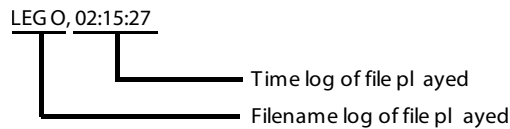
The 1st line shows the ID of the media player.



The 'Action' line shows the power up data or the mode of action.



The 'File log' line shows a file that was played and the time started (hh:mm:ss).



This data can be imported into a database or other program for analysis showing information such as:

- The number of times particular file was played. This can be further analyzed for client reporting or to reveal interactive choices.
- Monitoring and compliance information

4.2 Update.log

Update.log is another text file will be created on USB flash drive once the content upload process is done successfully. This file records the history of content updated as shown in the following example:

```
[Media Update Log]

ID No: 0000, Media content updated, 20060714, 11:43:13

1. Files present in both CF and USB
  -> Replace the files in CF by those in USB

  >> Files renewed in CF:
  IMG_0997.JPG
  IMG_0996.JPG
  IMG_0995.JPG
  IMG_1000.JPG
  IMG_0999.JPG
  IMG_0998.JPG
  2000KPT.AVI
  4720576.AVI

2. Files present in CF only
  -> Delete the files

  >> Files deleted from CF:
  No files needed to be deleted

3. Files present in USB only
  -> Copy the files from USB to CF

  >> Files newly added to CF:
  No files needed to be added
```

This file can be imported into a database for further analysis and reporting. For example it could be used to prepare a compliance report.

CONTACT DETAILS

USA: Digital View Inc.
18440 Technology Drive
Building 130
Morgan Hill, CA 95037
Tel: (1) 408-782 7773
Sales: ussales@digitalview.com
Fax: (1) 408-782 7883

EUROPE: Digital View Ltd
6 Marylebone Passage
London
W1W 8EX
UK
Tel: (44) (0)20 7631 2150
Sales: uksales@digitalview.com
Fax: (44) (0)20 7631 2156

ASIA: Digital View Ltd
16th floor Millennium City 3
370 Kwun Tong Road
Kwun Tong
Hong Kong
Tel: (852) 2861 3615
Sales: hksales@digitalview.com
Fax: (852) 2520 2987