



ViewStream™ 500 / 520

HD Solid State Media Player

Promo Pack Inc :

- ViewStream™ 500 or ViewStream™ 520
- CF Card pre installed with 1080p content
- Power Supply w/ AC Power Cable
- A/V Cables

Bulk Pack Inc :

- ViewStream™ 500 or ViewStream™ 520
- Power Supply w/ AC Power Cable

Unpack & Play

The ViewStream™ 500 / 520 Promo Pack ships ready to unpack and play - the CF card is pre-loaded with 1080p video. The output has been set to HDMI 720p for out-of-the box display compatibility. To change output settings to full 1080p resolution follow these steps.

- Step 1 :** Unpack the ViewStream™ 500 / 520 Media Player and supplied cables.
- Step 2 :** To make the most out of the VS-500 / 520 HD capabilities connect your display using an HDMI cable.
- Step 3 :** Make sure all the dip switches (SW1 on reverse of unit) are pushed **UP** to the **OFF** position. (see other settings if other cables are used)
- Step 4 :** Connect Power Supply.
- Step 5 :** Power on the unit using the switch on the back of the player. The content will auto-play after initial 30 seconds startup.

Copy & Play

Any compatible* digital video file can be played on the ViewStream™ 500 / 520. Simply remove the CF card** and use your PC to copy and paste the new video file(s) to the CF Card Media folder.

Allow for the system to startup and the new video will start playback automatically. If there is more than one video file, playback will be in alpha-numeric order.

* For compaibility see the Content Creation Guide which is available for free download at : www.digitalview.com

** CF Card is pre-installed on promo pack version only





Advanced Functions

Explore the ViewStream™ 500 / 520 more advanced features...

Playlist :

This will play files in a specific order

Interactivity :

A wide range of choices for adding buttons, touch screens, event triggers

USB Update :

Update the CF card from a USB flash drive. Very useful when multiple units need updating with the same content

Scheduling :

Specify when playlists activate

RS-232 :

Use the RS-232 protocols for monitoring, command and control functionality or unique developments

Data Logging :

A text file record of file playback data for analysis

<http://www.digitalview.com/products/viewstream-digital-media-players>

See the product web page for application notes explaining how to use these features.

Accessories

Digital View offer a range of accessories to compliment and further enhance the capabilities of the ViewStream™ 500 / 520

Button Kits :

Help enable 1 or up to 64 buttons or event triggers for functions like track selection

LCD Display Kits :

For system builders Digital View provides a range of LCD interface and related products

For more information contact your local office, details found at www.digitalview.com

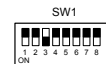
Doc No: 4171801-20 (August 2010)

Dip Switch Settings

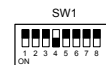
HDMI / DVI



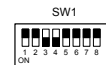
HDTV (Full HD)
1920x1080p @ 60Hz



HDTV (HD Ready)
1280x720p @ 60Hz

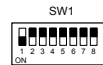


PC Monitor
1600x1200 @ 60Hz

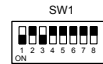


PC Monitor
1024x768 @ 60Hz

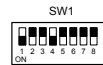
COMPONENT



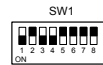
HDTV (Full HD)
1920x1080i @ 60Hz



HDTV (HD Ready)
1280x720p @ 60Hz

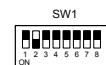


TV / AV Monitor
NTSC

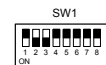


TV / AV Monitor
PAL

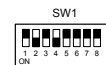
ARGB / VGA



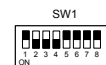
HDTV (Full HD)
1920x1080i @ 60Hz



HDTV (HD Ready)
1280x720p @ 60Hz

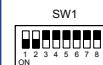


PC Monitor
1600x1200 @ 60Hz

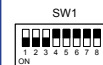


PC Monitor
1024x768p @ 60Hz

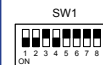
S-VIDEO / COMP



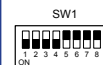
Reserved



Reserved



TV / AV Monitor
NTSC



TV / AV Monitor
PAL