

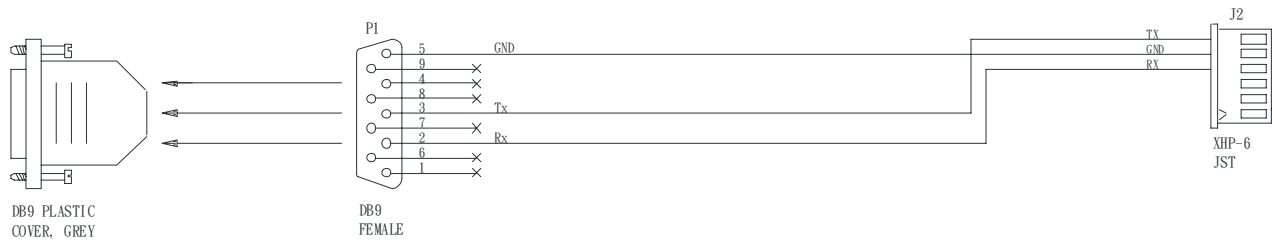
Firmware upgrade procedure for U8 on ALR-1400/HE-1400

Procedure :

The “GProbe5.1.0.16.exe” firmware upgrade program can be run under Windows XP platform. Please contact your local office to get the program.

Step 1 : Use RS-232 cable (suggest to use P/N 426090200-3). DB9 connector connect to serial port, and JST XHP-6 connector connect to CN8 on the controller board.

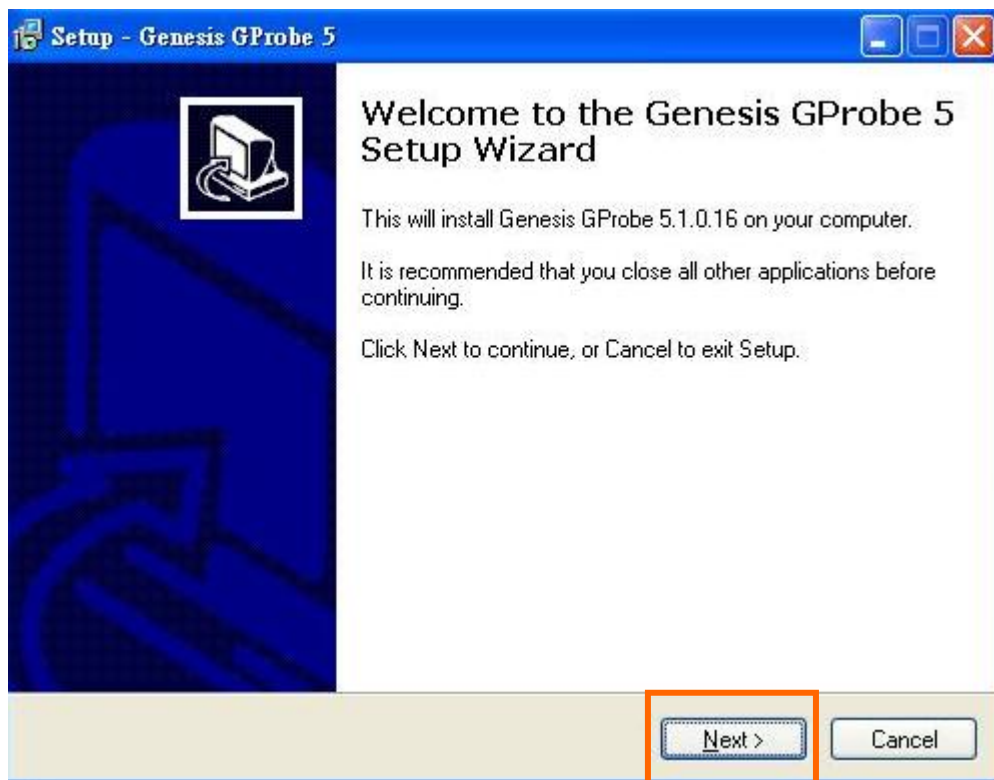
RS-232 cable P/N 426090200-3 drawing :



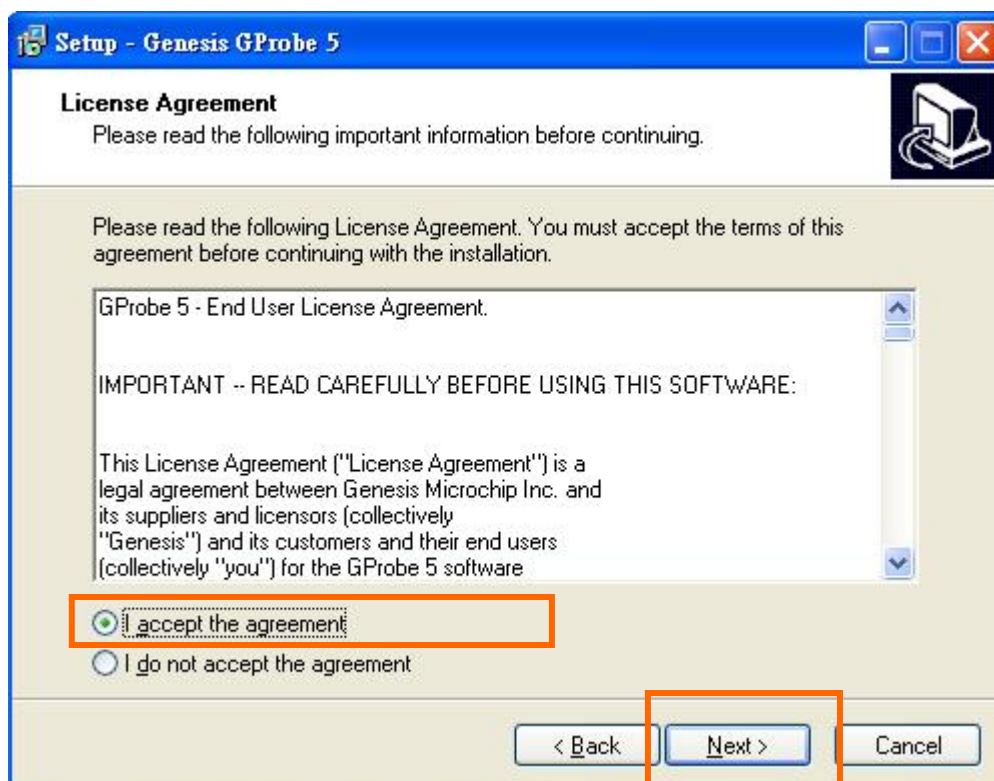
Step 2 : Install the “GProbe5.1.0.16.exe”
see step 3 – 9 in details.

firmware upgrade program in the computer,

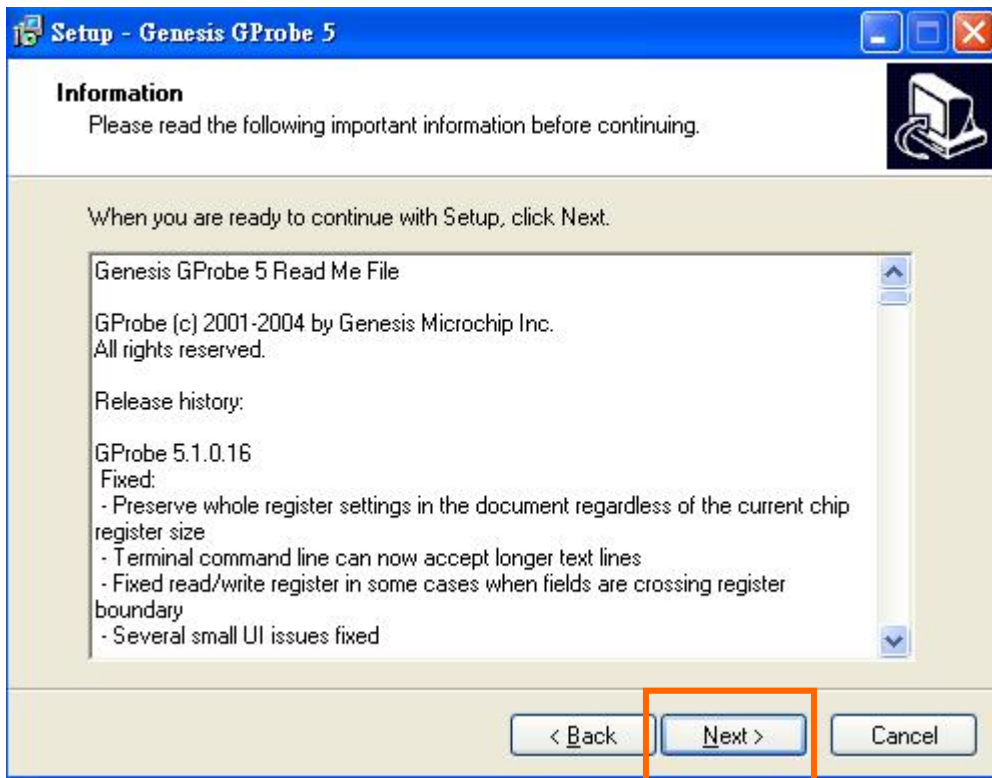
Step 3 : Install the “GProbe5.1.0.16.exe” program – Click “Next”



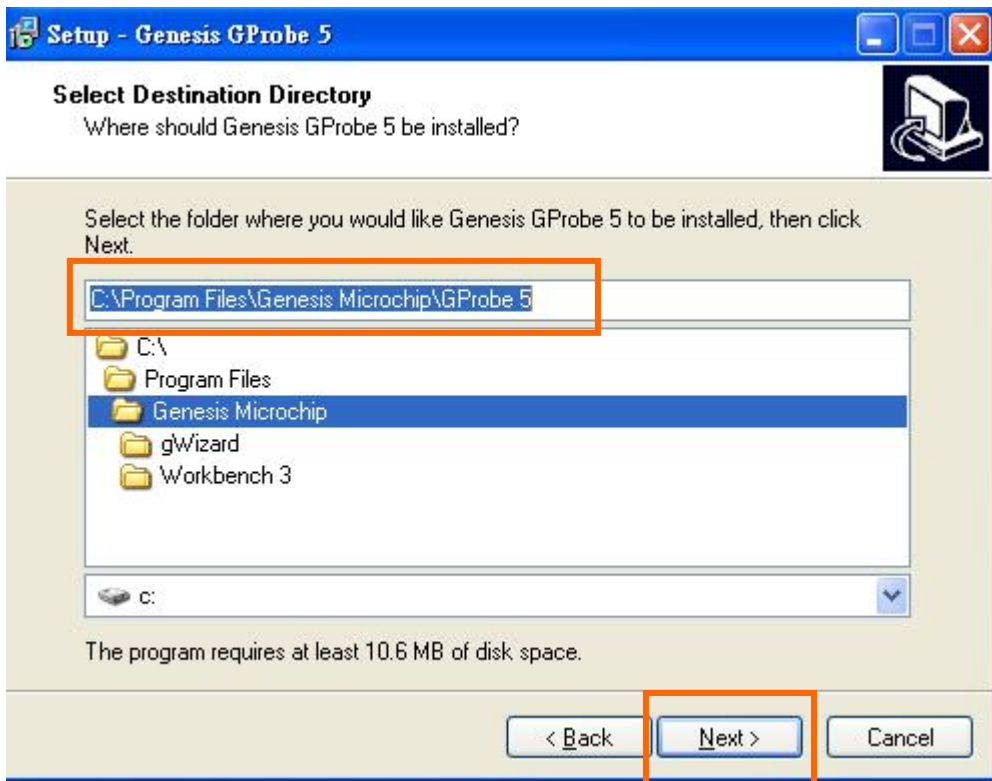
Step 4 : Choose “I accept the agreement” and click “Next”.



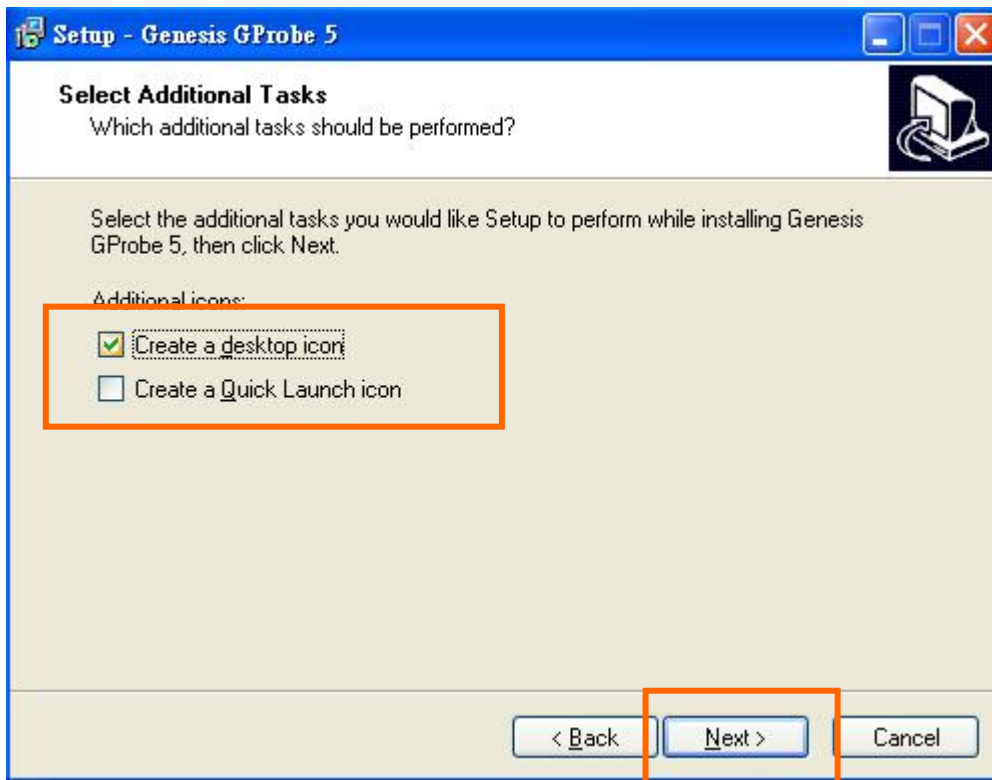
Step 5 : Click “Next”



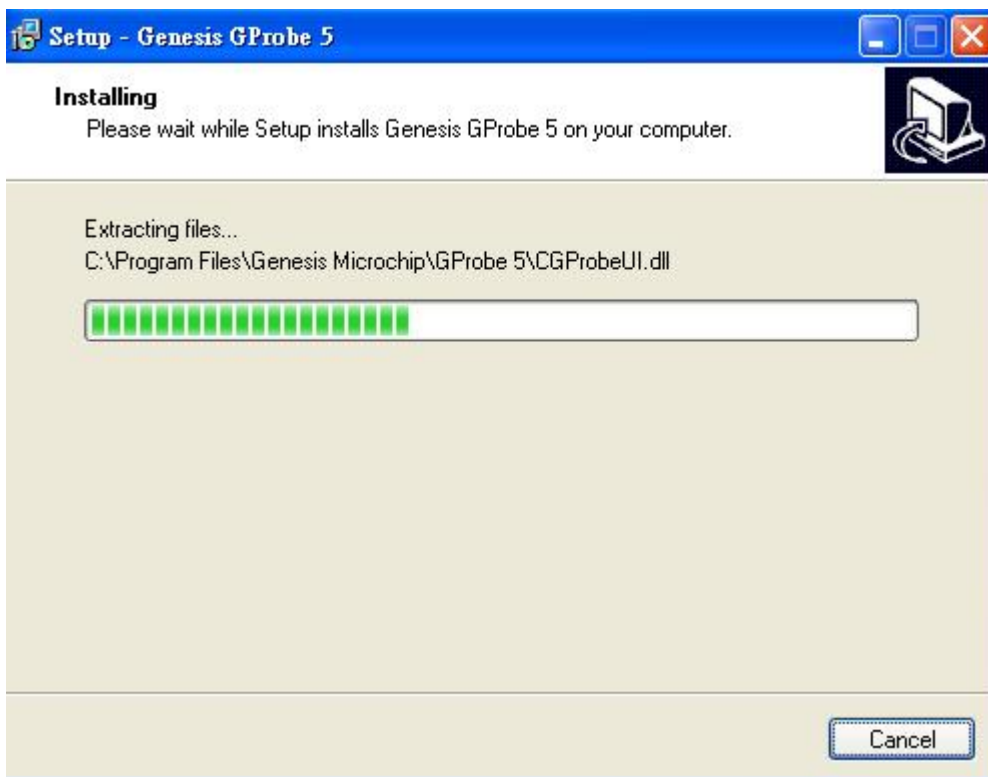
Step 6 : Define the path and directory to be installed the program, then click “Next”.



Step 7 : Select the additional tasks you would like to setup to perform while installing the program. Then click “Next”



Step 8 : Installing the program in progress.

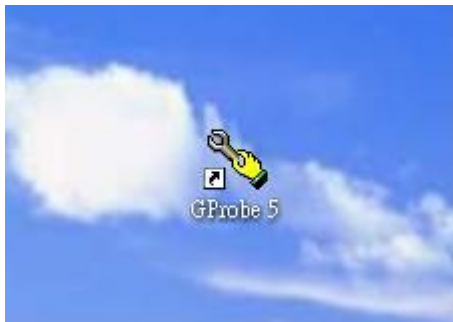


Step 9 : Click “Finish” to finish the installing of GProbe program.

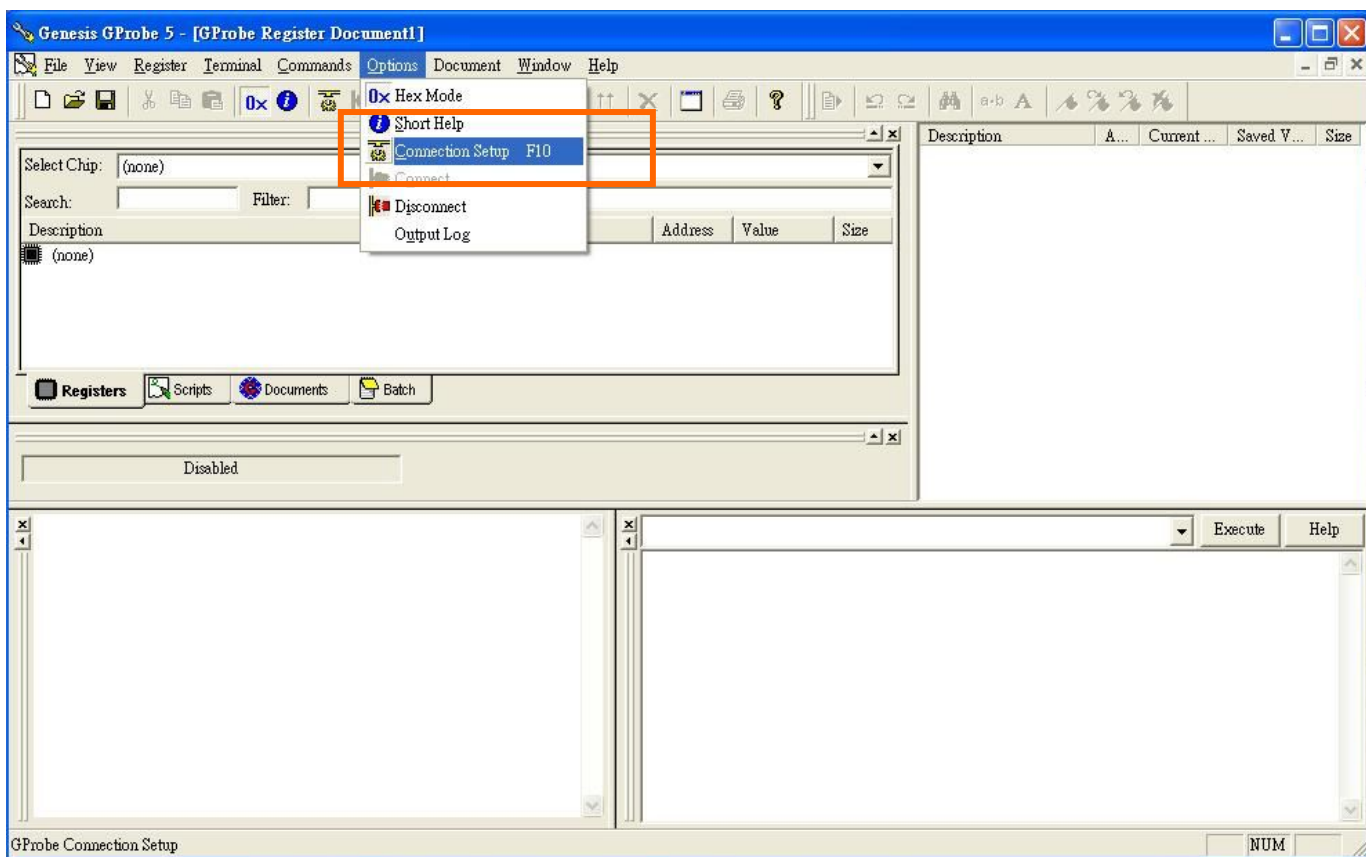


Step 10 : Unzip the firmware code and put it in the same directory

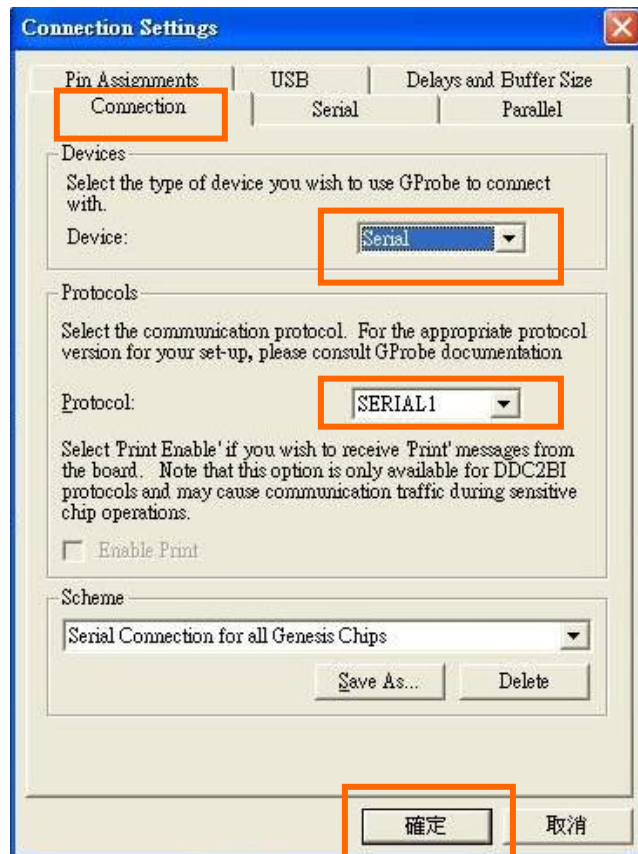
Step 11 : After you successfully installed the GProbe program, please run the program.



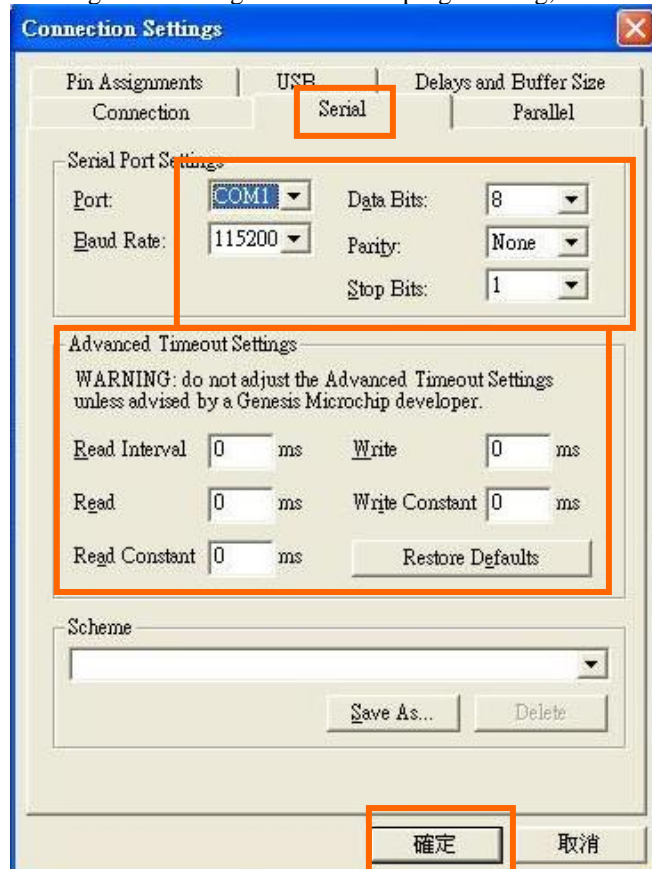
Step 12 : Run the GProbe program. Choose “Options” → “Connection Setup”



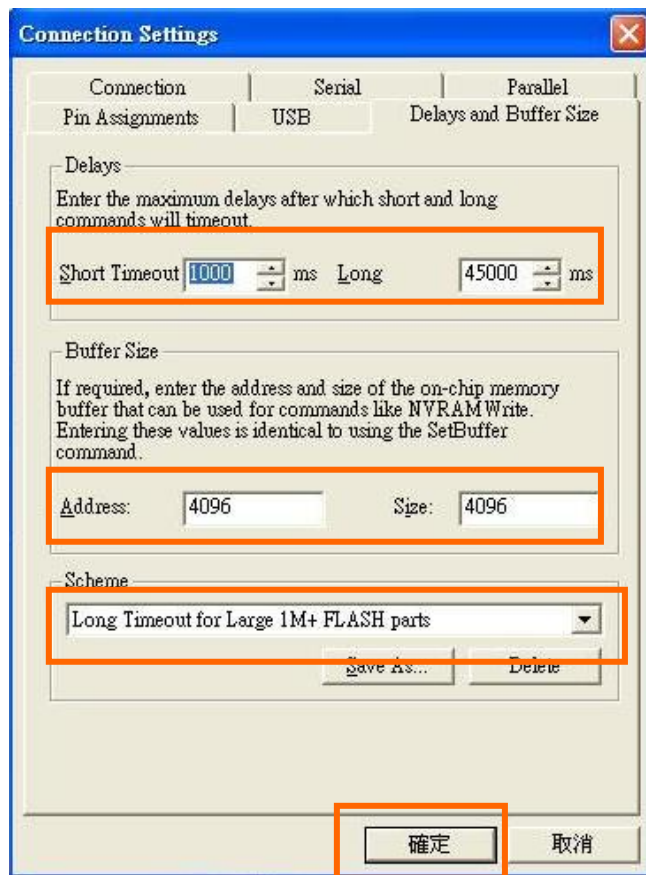
Step 13 : Choose the matching connection settings for ALR-1400 firmware programming, then click “confirm”



Step 14 : Choose the matching serial settings for firmware programming, then click “confirm”



Step 15 : Choose the matching Delays and buffer size settings for ALR-1400 firmware programming, then click “confirm”

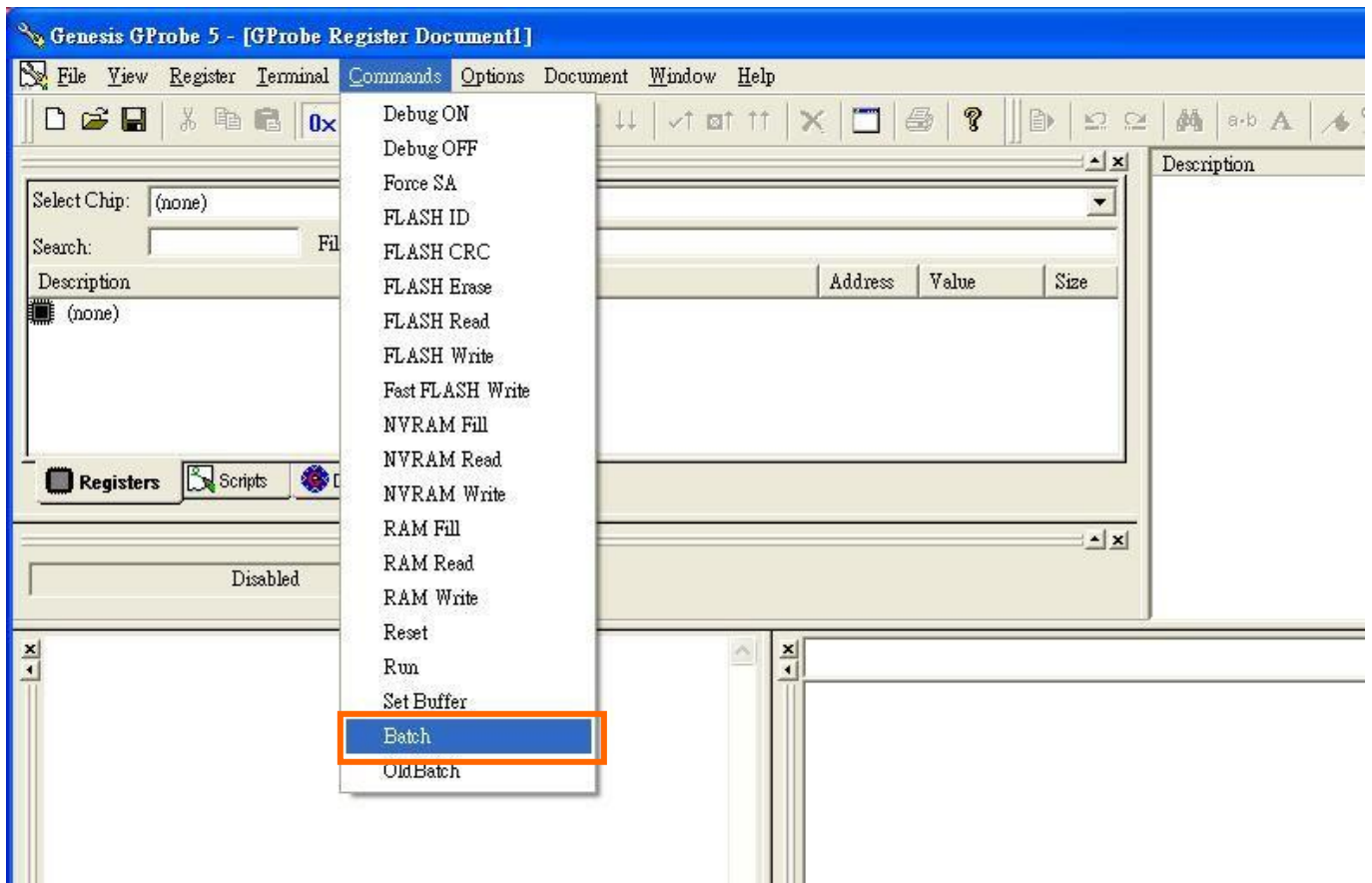


Step 16 : Remove JP7 jumpers on ALR-1400 controller.

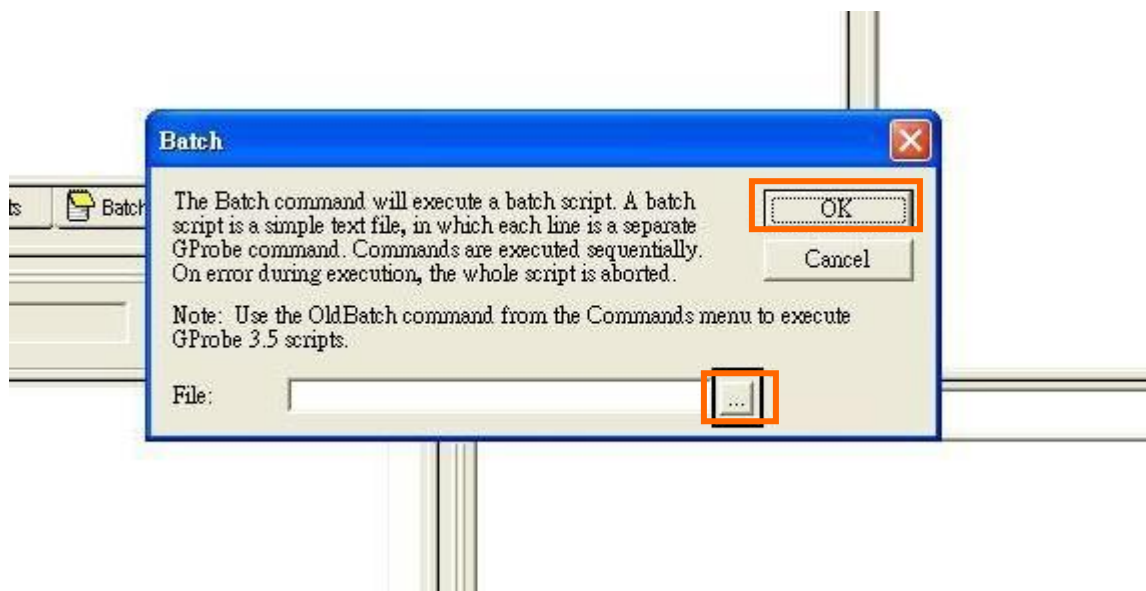
Step 17 : Power on the ALR-1400 controller.

Step 18 : Short JP7 jumper on ALR-1400 controller.

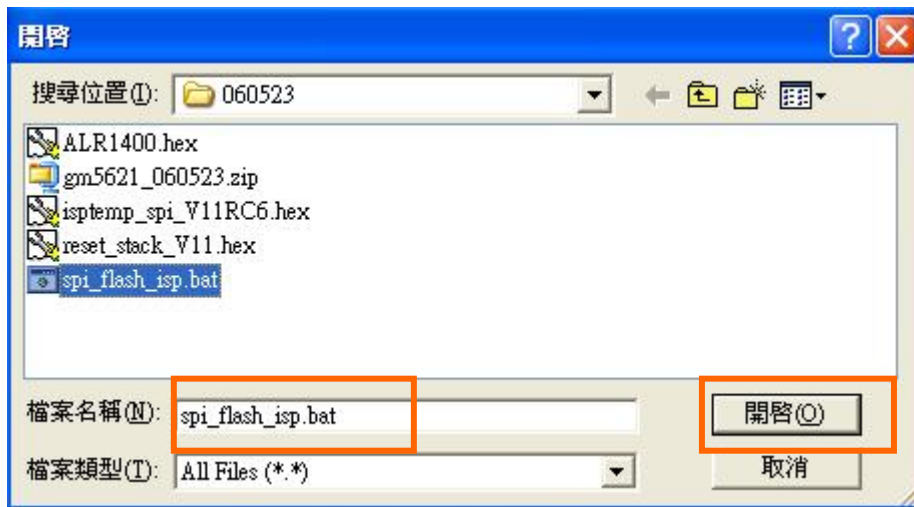
Step 19 : Choose “Commands” → “Batch”



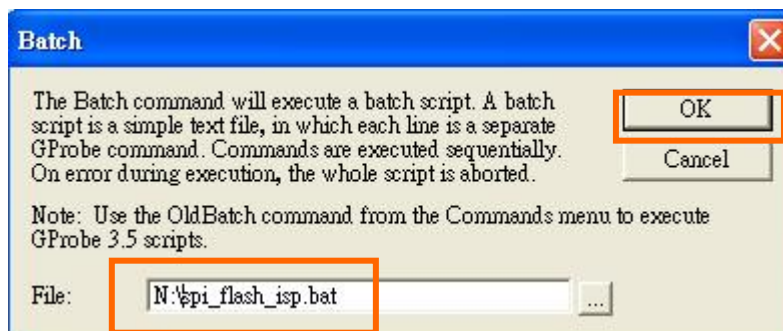
Step 20 : Get the firmware by clicking the directory icon.



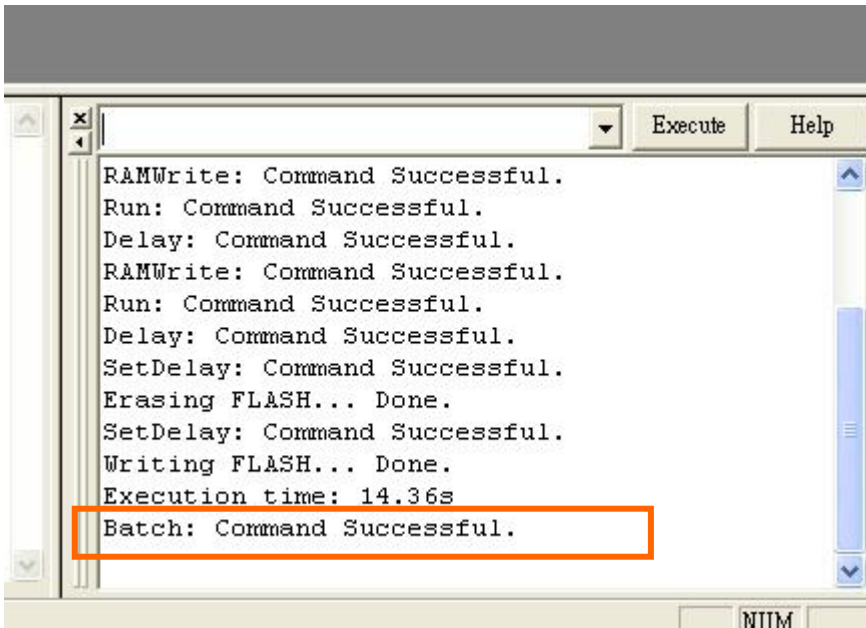
Step 21 : Choose “.bat” file for firmware upgrade and click “Open”



Step 22 : Click “OK”. Then it will automatically download the firmware into the controller.



Step 23 : Show “Batch: Command Successful” to indicate the firmware is successfully downloaded.



Step 24: Power off and then on the controller.

Step 25 : Perform the “Load factory default” on the ALR-1400 controller. And check the version display on the OSD menu is the same you have just programmed.

End.

Date : 19 May 2008.
Rev.03