

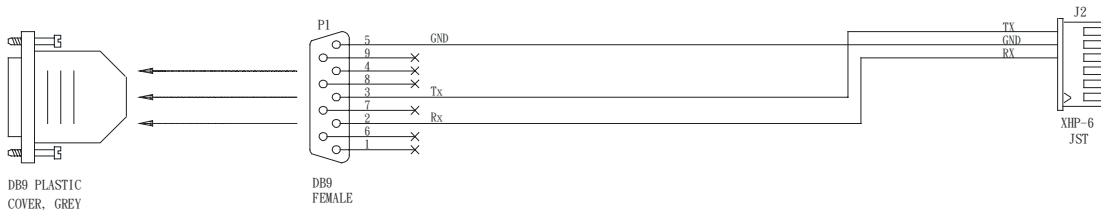
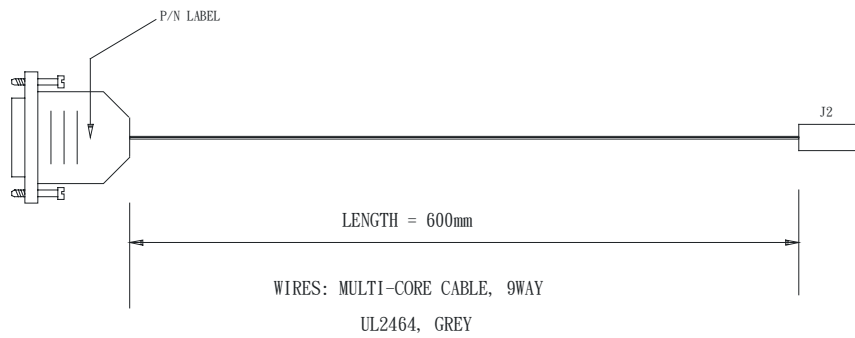
## ***Firmware upgrade for DVS-1600***

### **Procedure :**

The “GProbe5.1.0.16.exe” firmware upgrade program can be run under Windows XP platform. Please contact your local office to get the program.

**Step 1 :** Use RS-232 cable (suggest to use P/N 4260901-00). DB9 connector connect to serial port, and JST XHP-6 connector connect to CN8 on the controller board.

RS-232 cable P/N 4260901-00 drawing :



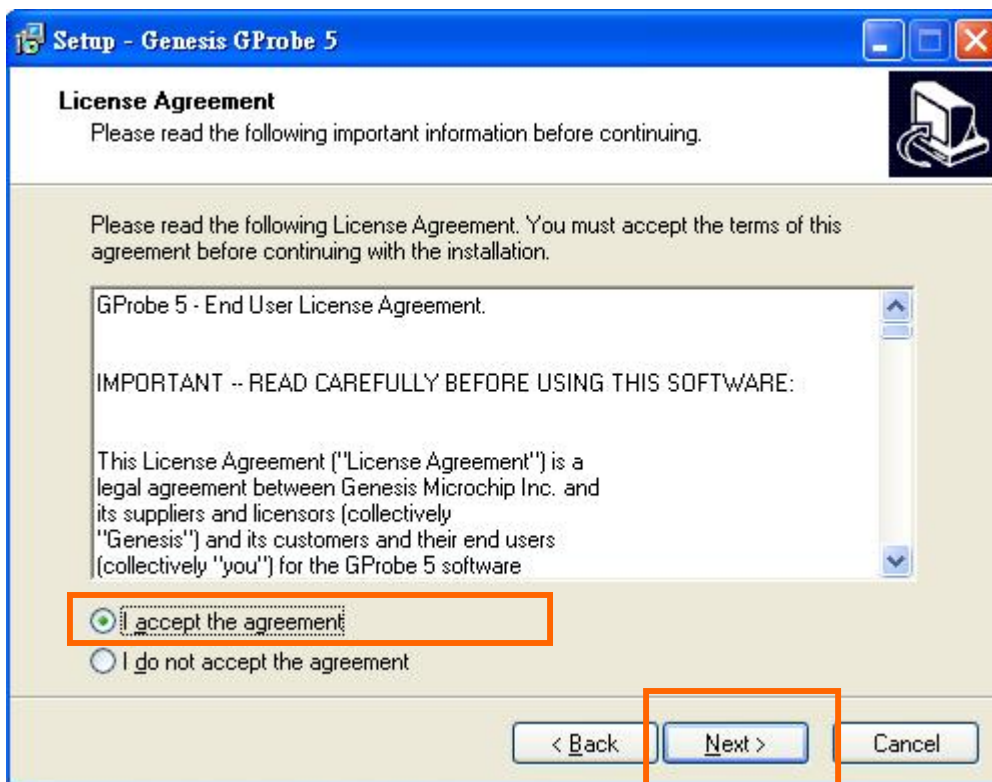
**Step 2 :** Install the “GProbe5.1.0.16.exe”  
see step 3 – 9 in details.

firmware upgrade program in the computer,

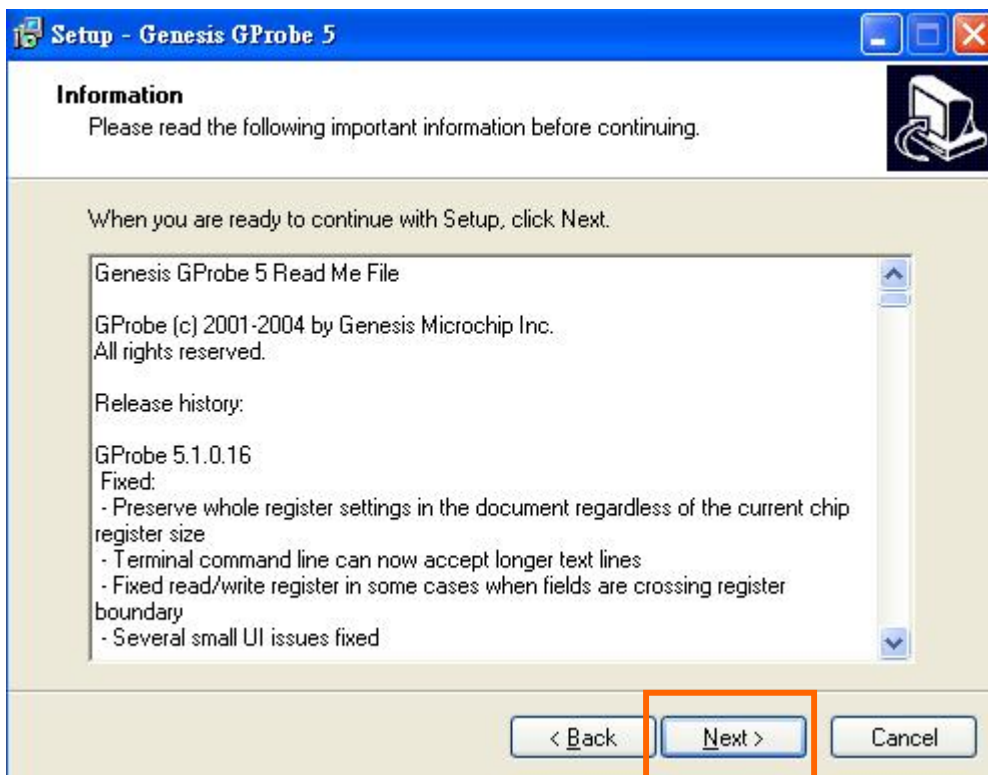
**Step 3 :** Install the “GProbe5.1.0.16.exe” program – Click “Next”



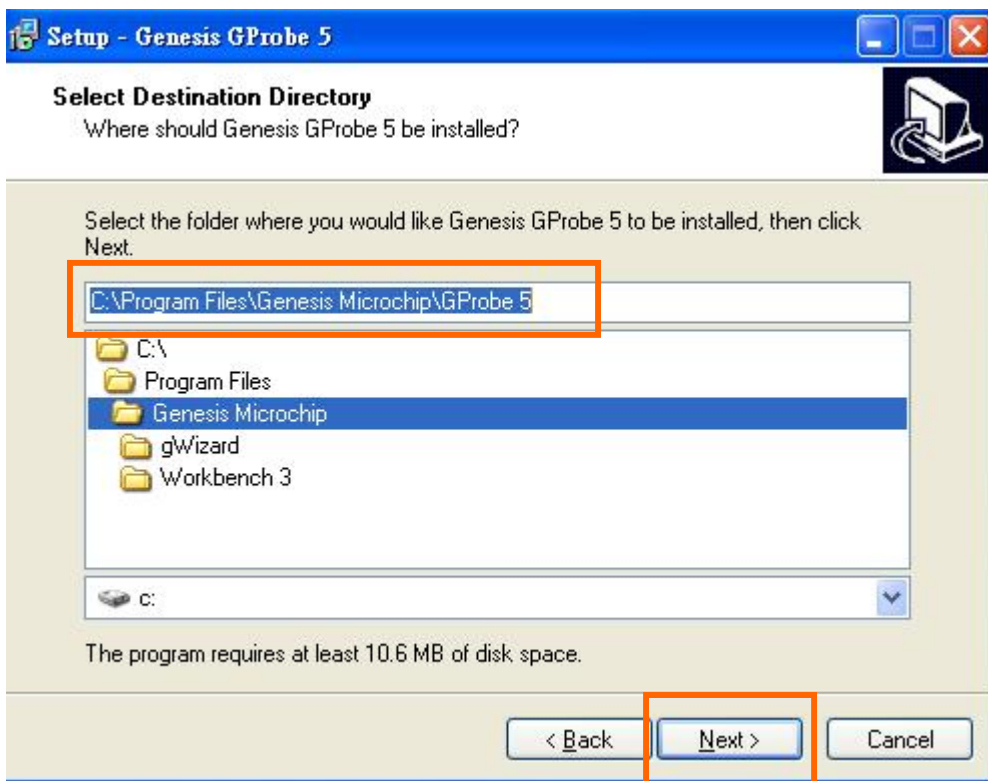
**Step 4 :** Choose “I accept the agreement” and click “Next”.



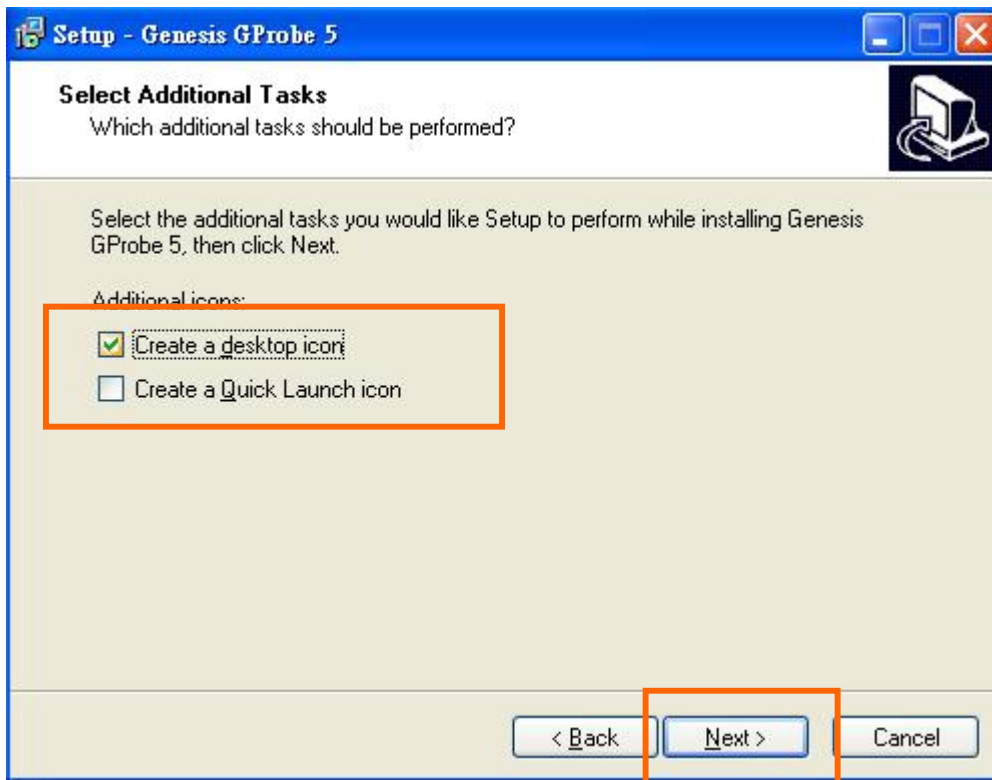
**Step 5 :** Click “Next”



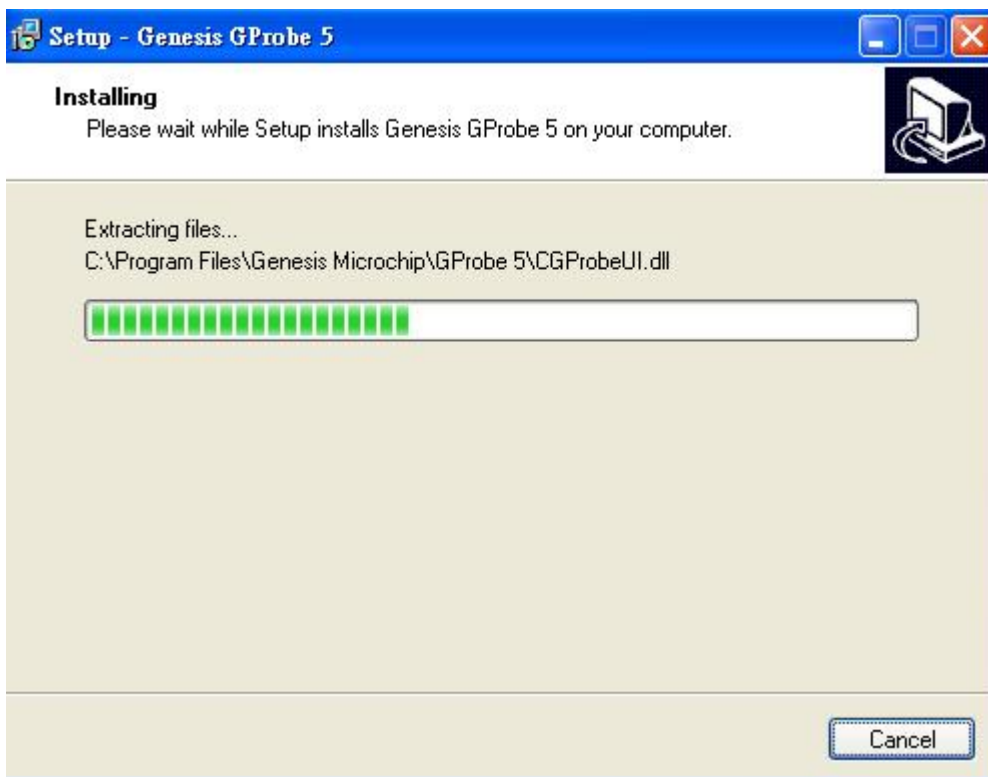
**Step 6 :** Define the path and directory to be installed the program, then click “Next”.



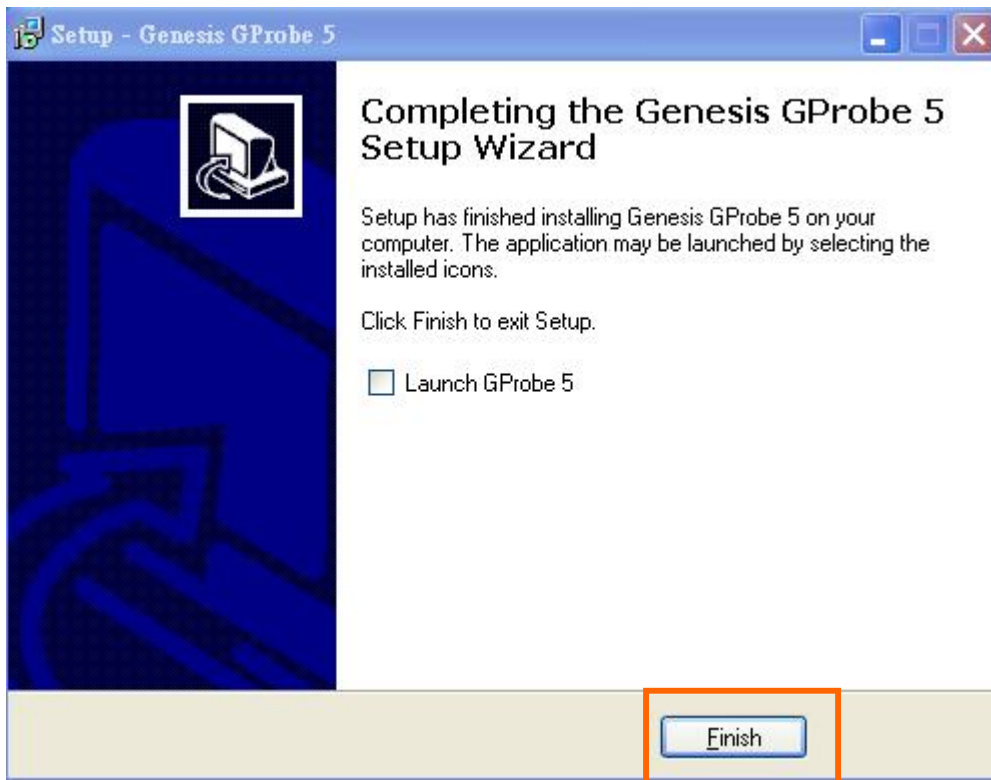
**Step 7 :** Select the additional tasks you would like to setup to perform while installing the program. Then click “Next”



**Step 8 :** Installing the program in progress.



**Step 9 :** Click “Finish” to finish the installing of GProbe program.

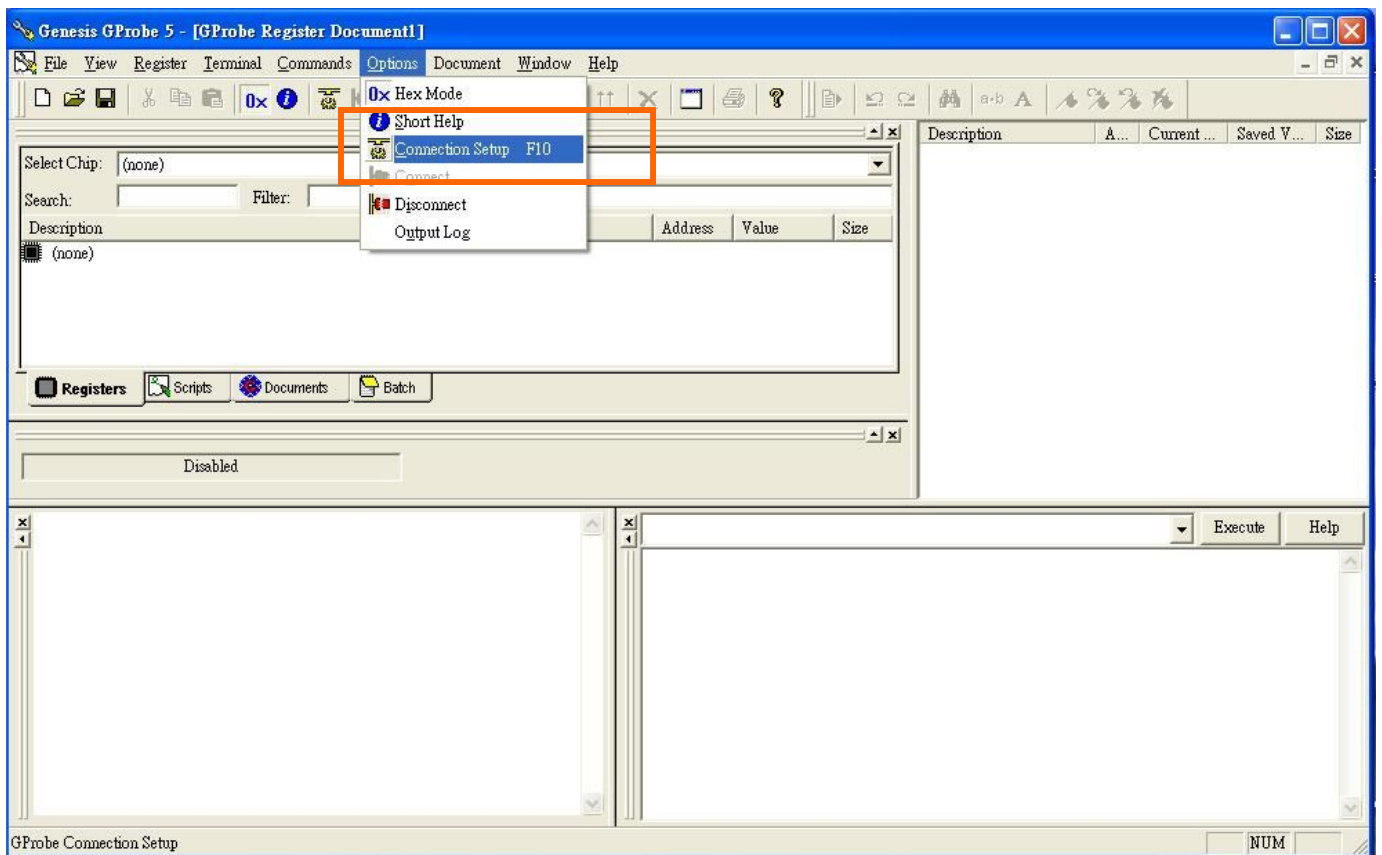


**Step 10 :** Unzip the firmware code and put it in the same directory

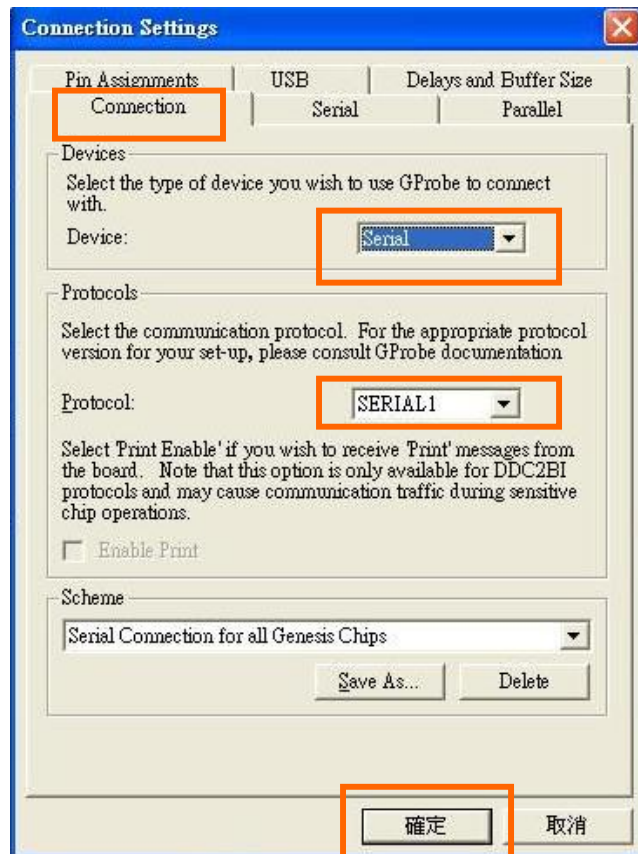
**Step 11 :** After you successfully installed the GProbe program, please run the program.



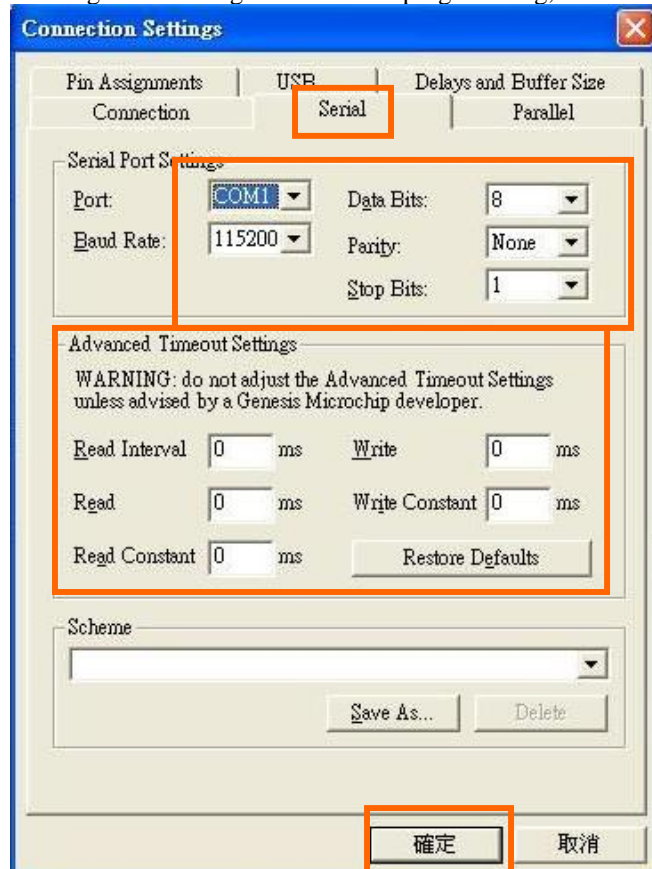
**Step 12 :** Run the GProbe program. Choose “Options” → “Connection Setup”



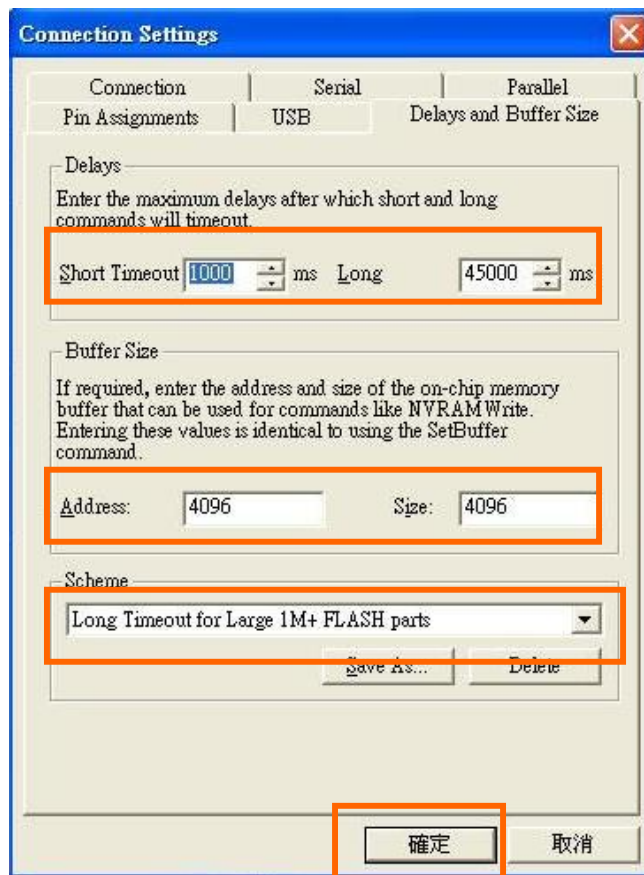
**Step 13 :** Choose the matching connection settings for DVS-1600 firmware programming, then click “confirm”



**Step 14 :** Choose the matching serial settings for firmware programming, then click “confirm”



**Step 15 :** Choose the matching Delays and buffer size settings for DVS-1600 firmware programming, then click “confirm”



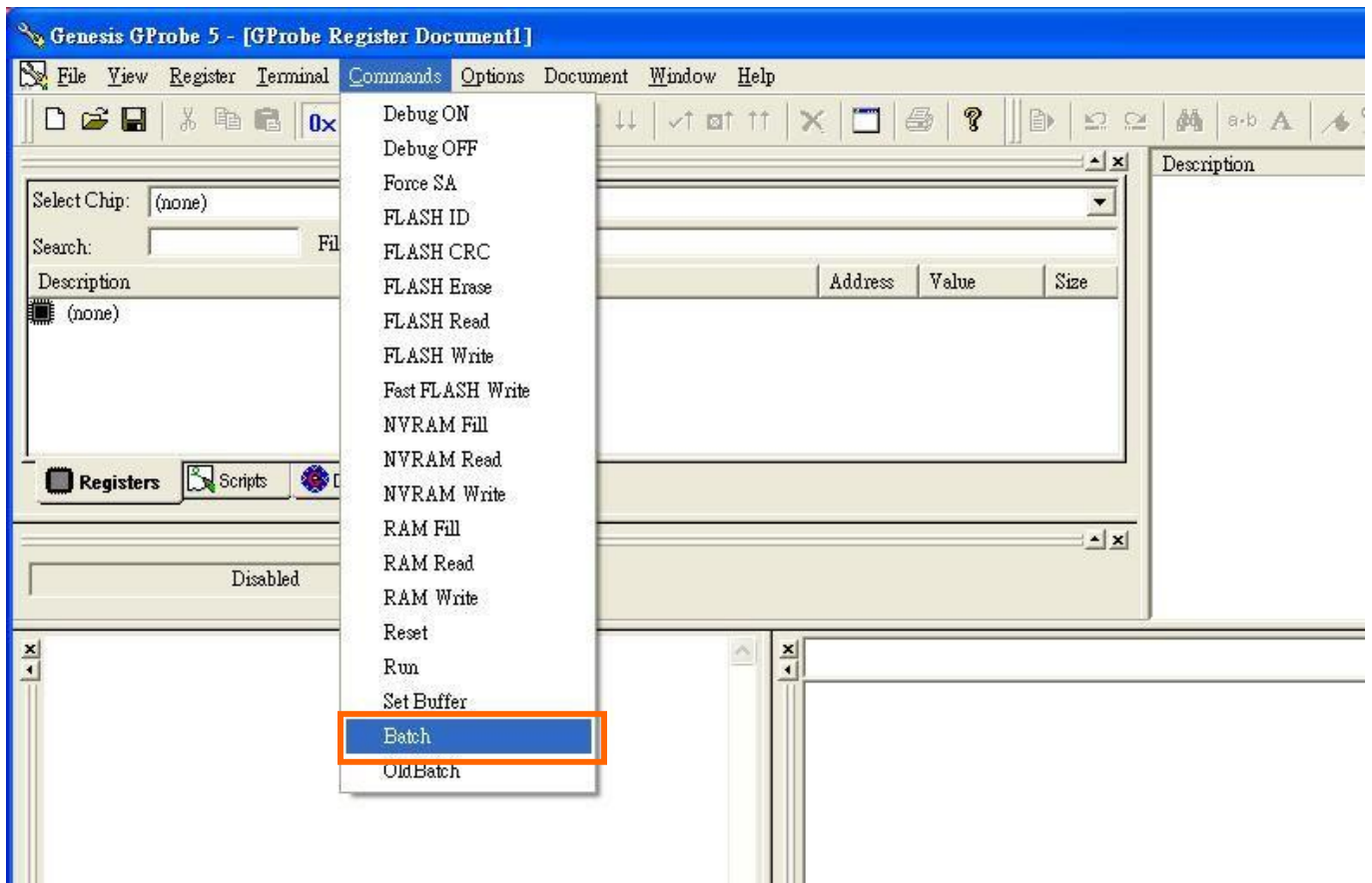
**Step 16 :** Remove JP1 jumpers on DVS-1600 controller.

**Step 17 :** Power on the DVS-1600 controller.

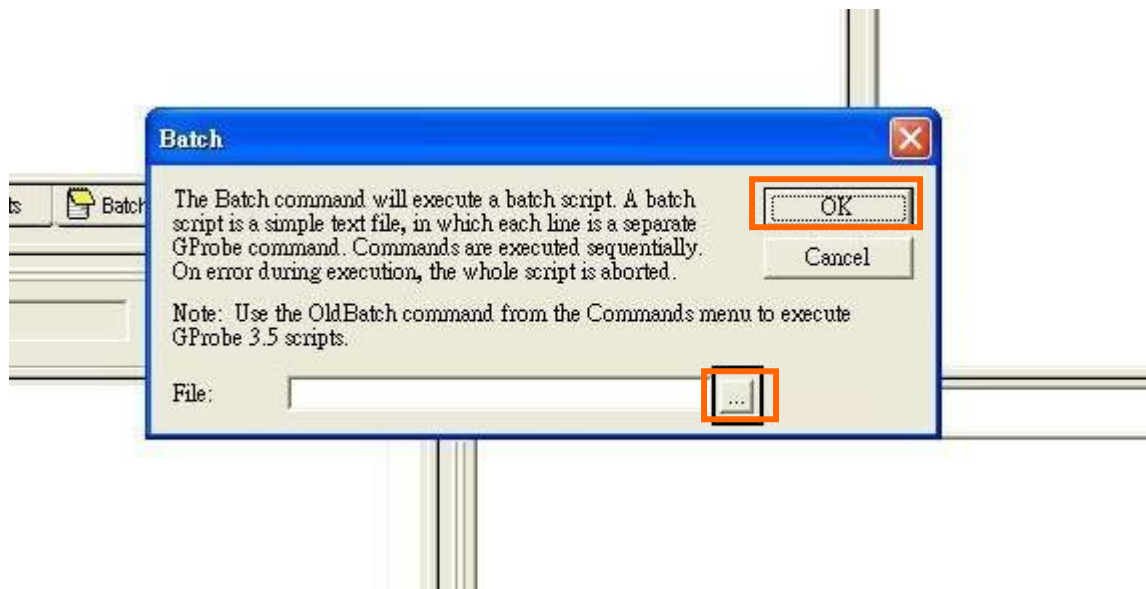
**Step 18 :** Short JP1 jumper on DVS-1600 controller.



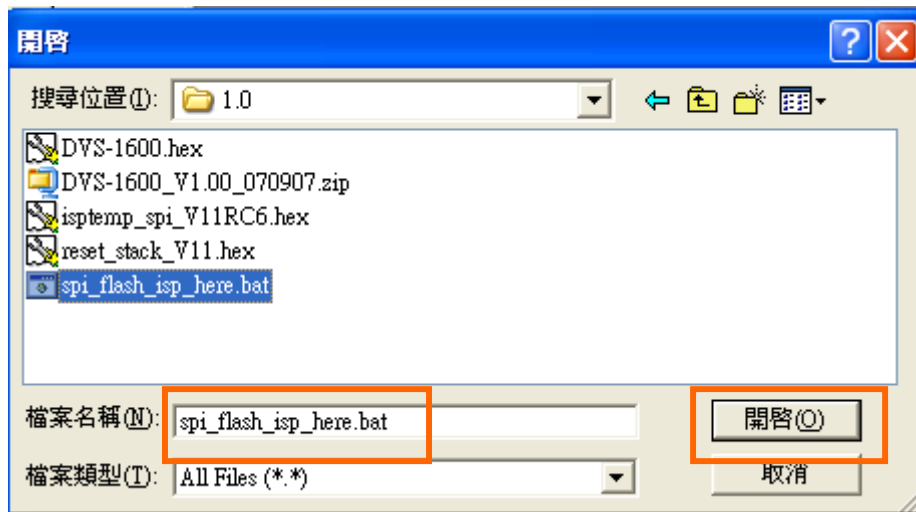
Step 19 : Choose “Commands” → “Batch”



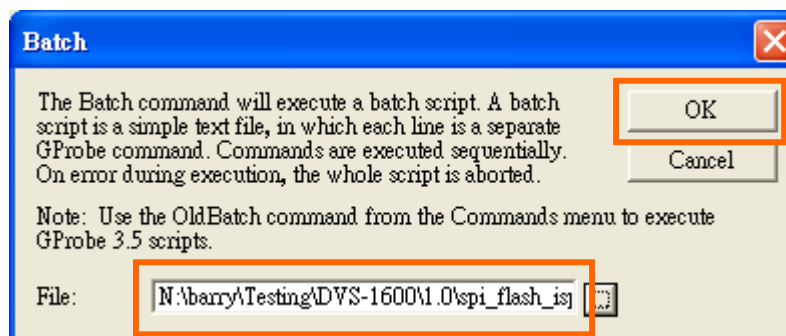
Step 20 : Get the firmware by clicking the directory icon.



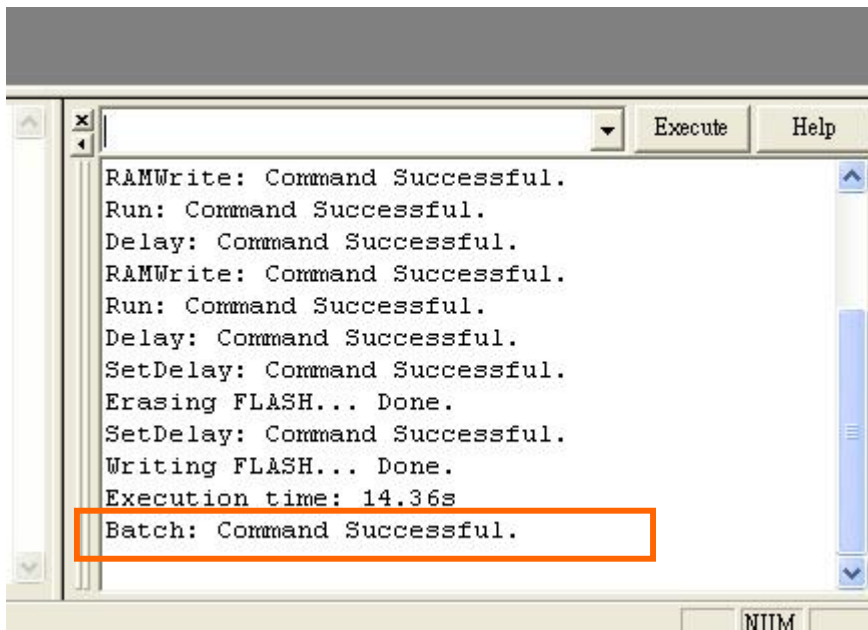
**Step 21 :** Choose “.bat” file for firmware upgrade and click “Open”



**Step 22 :** Click “OK”. Then it will automatically download the firmware into the controller.



**Step 23 :** Show “Batch: Command Successful” to indicate the firmware is successfully downloaded.



**Step 24:** Power off and then on the controller.

**Step 25 :** Perform the “Load factory default” on the DVS-1600 controller. And check the version display on the OSD menu is the same you have just programmed.

End.

Date : 7 Sept 2007.  
Rev.00