

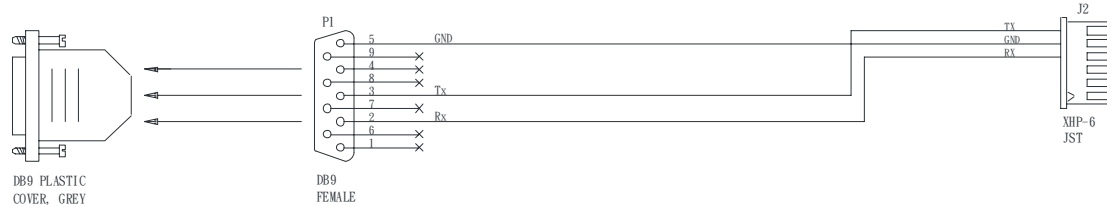
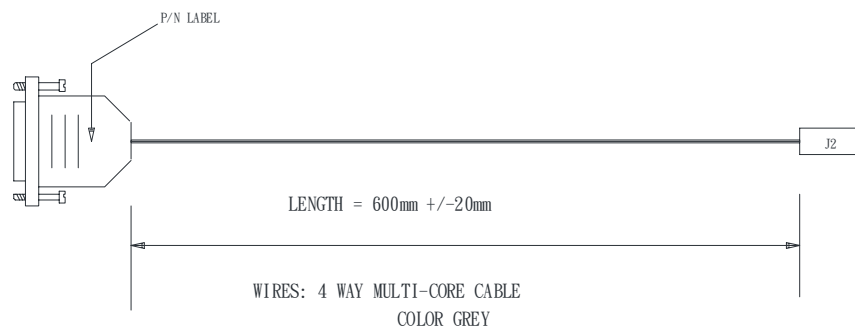
Firmware upgrade procedure for U15 on SP-1600/ HE-1600

Procedure :

The “FlashUpgrader.exe” firmware upgrade program can run under Windows XP platform.

Step 1 : Use RS-232 cable (suggest to use P/N 426090200-3). DB9 connector connect to serial port, and JST XHP-6 connector connect to CN8 on the controller board.

RS-232 cable P/N 426090200-3 drawing :



Step 2 : Turn off the controller

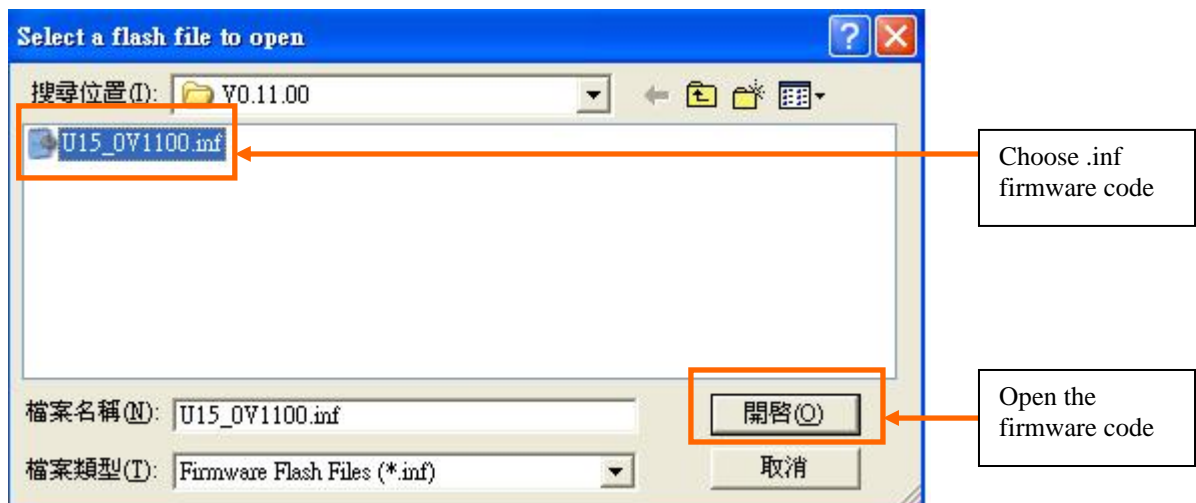
Step 3 : Run Pixelworks upgrade program “FlashUpgrader.exe”



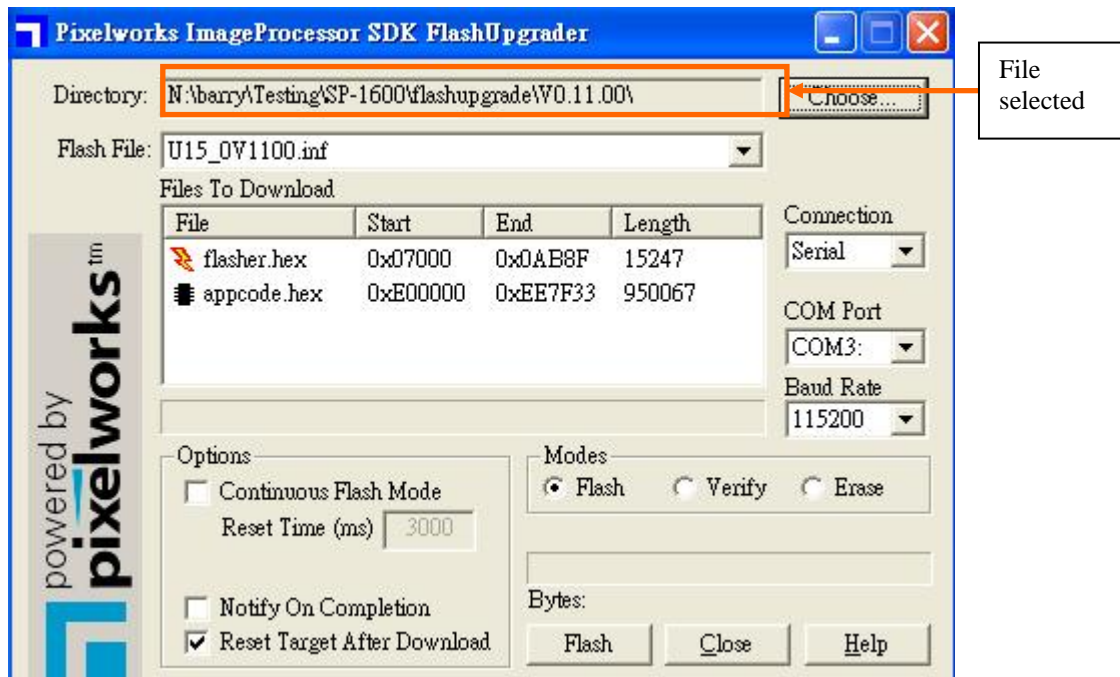
Step 4 : The program will launch as below. Please select “Choose” to select the corresponding firmware to be downloaded.



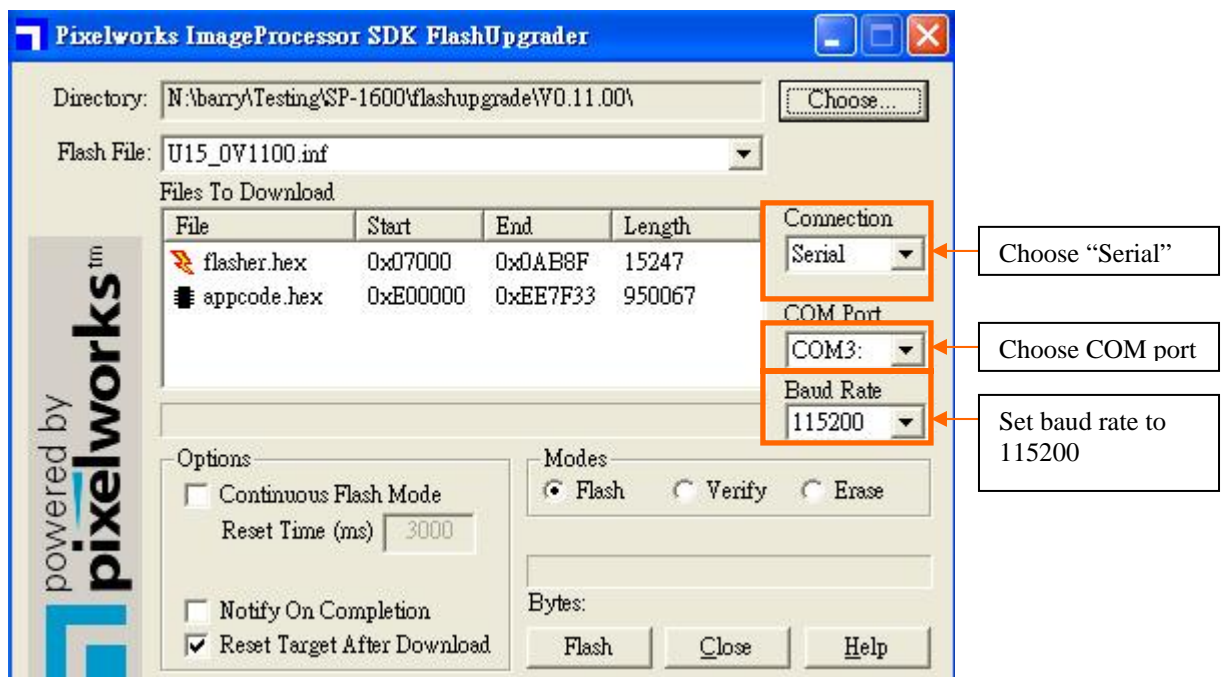
Step 5 : Choose the corresponding .inf firmware code and open it.



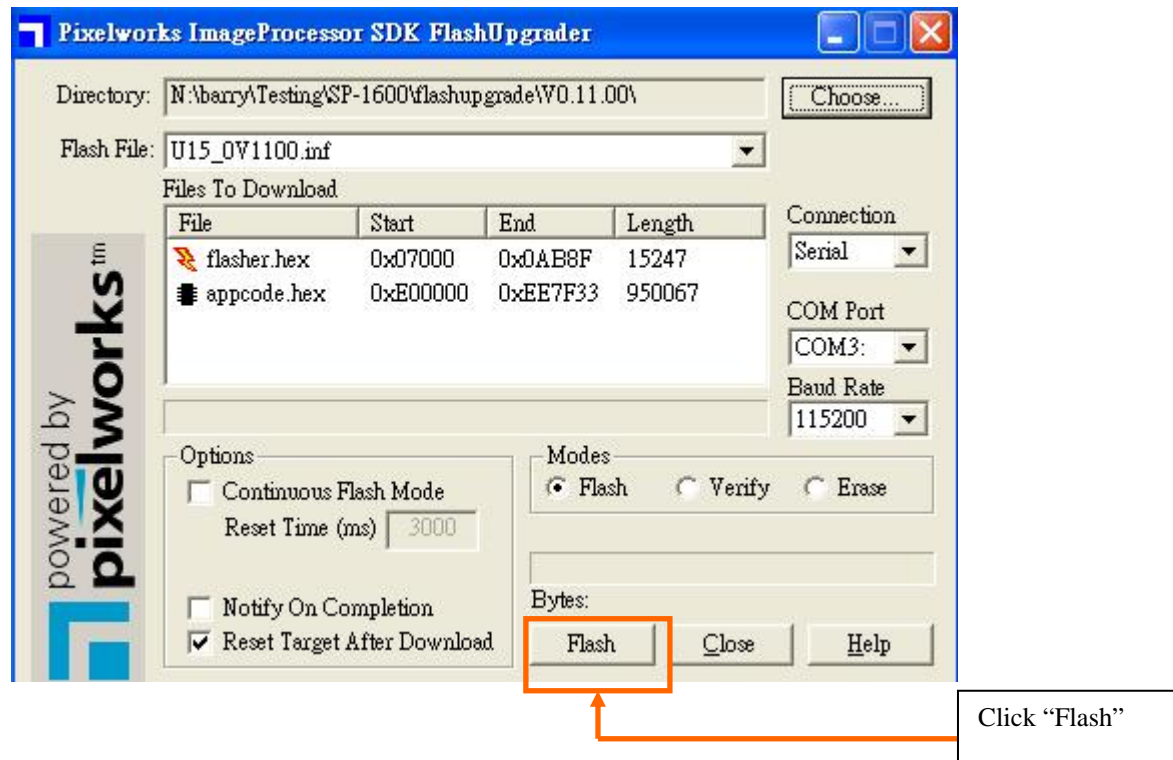
Step 6 : The file you selected will be shown.



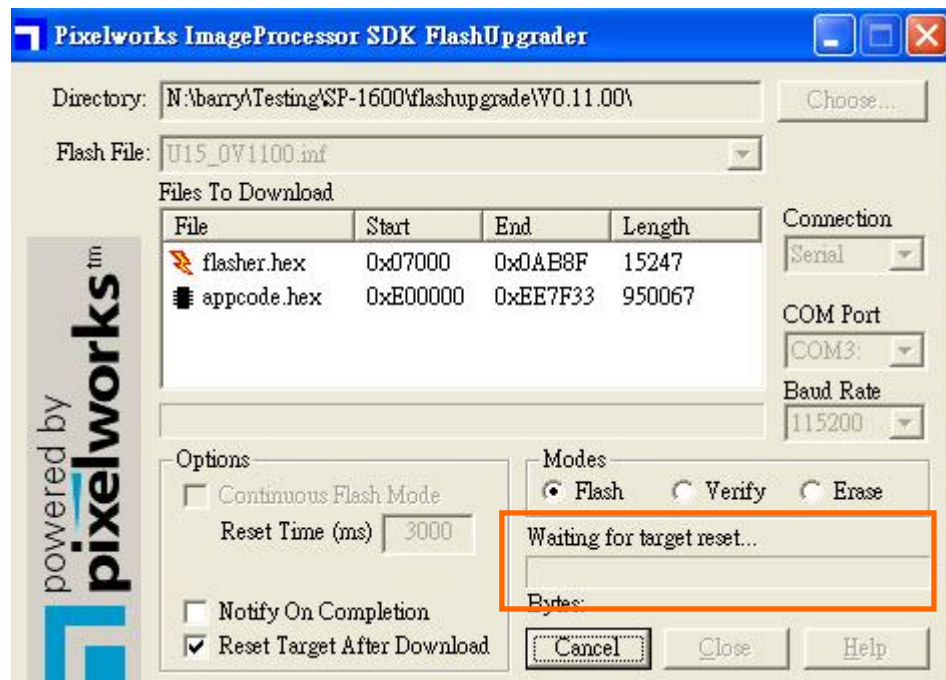
Step 7 : Choose "Serial" in connection column and corresponding serial port you are using and set the baud rate is 115200 setting.



Step 8 : Make sure the controller is off. And then click “Flash”.

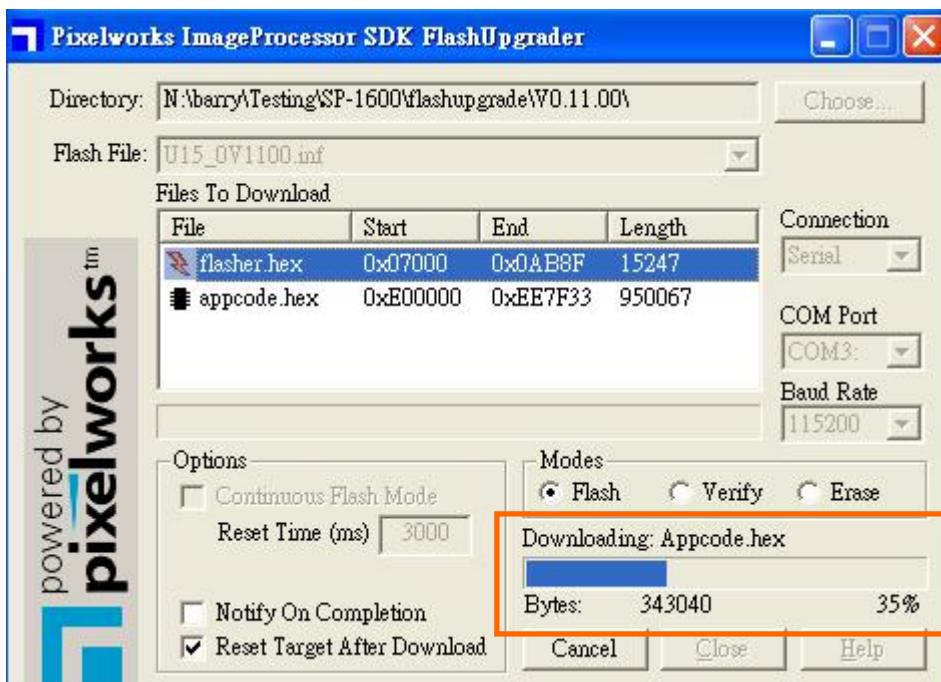
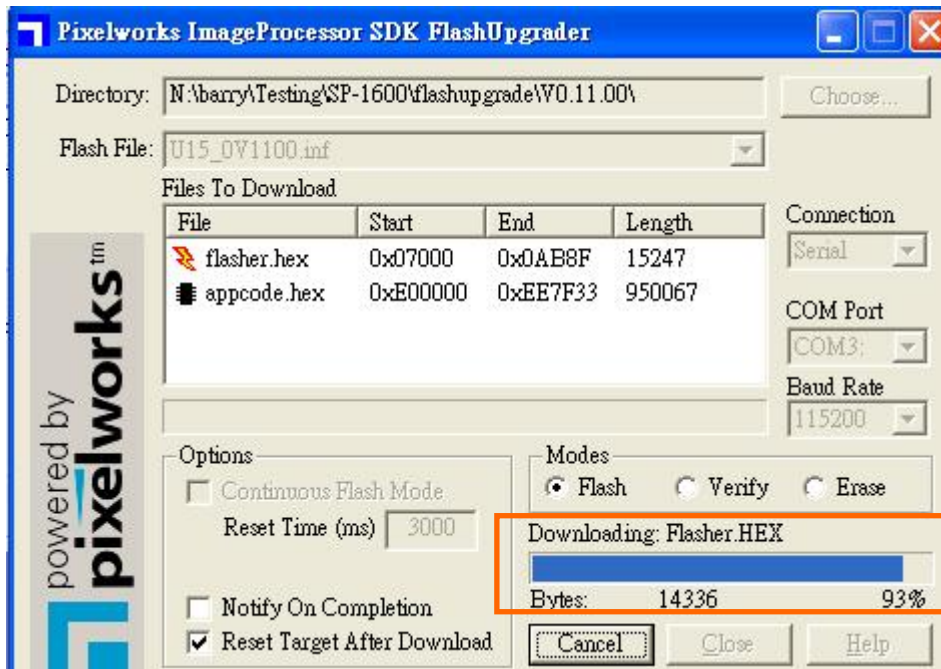


Step 9 : Image display below.

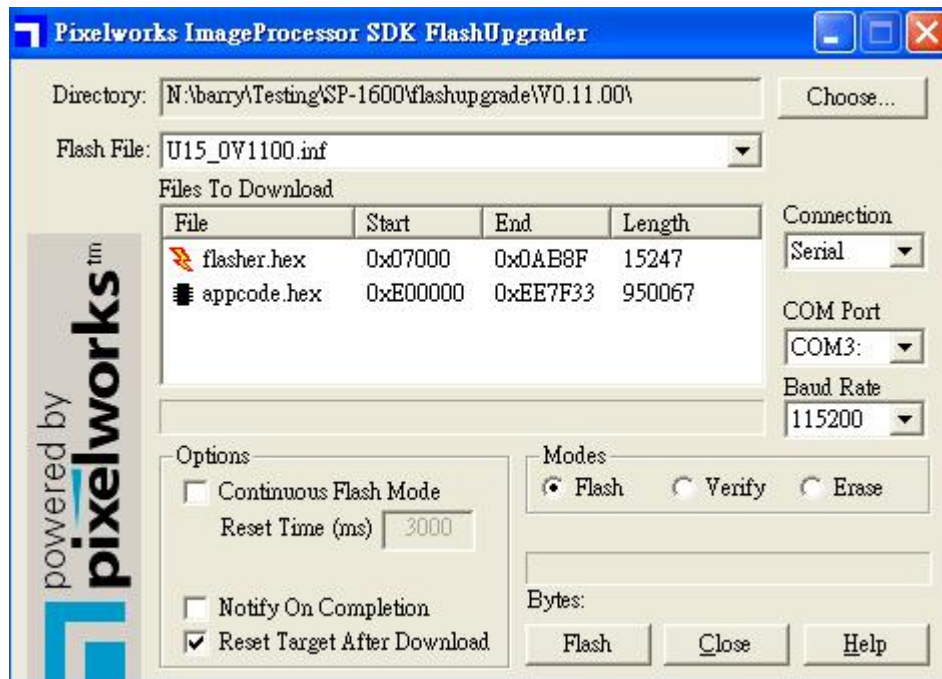


Step 10 : Turn on the controller

Step 11 : Programming is in progress, see below two images. It will take about 3 mins for programming.



Step 12 : Finish the upgrade process



Step 13 : Switch off and then on the controller

Step 14 : Perform the “Reset to factory defaults” on the controller. And check the version display on the OSD menu is the same you have just programmed.

End.

Date : 19 May 2008